

1035

1136

246

L. & S.—56

REMAINING PORTION

R.P.O. Vol. 431

Fol. 193

Cadastral Sheet (G.14.B) 1/b & 2/a

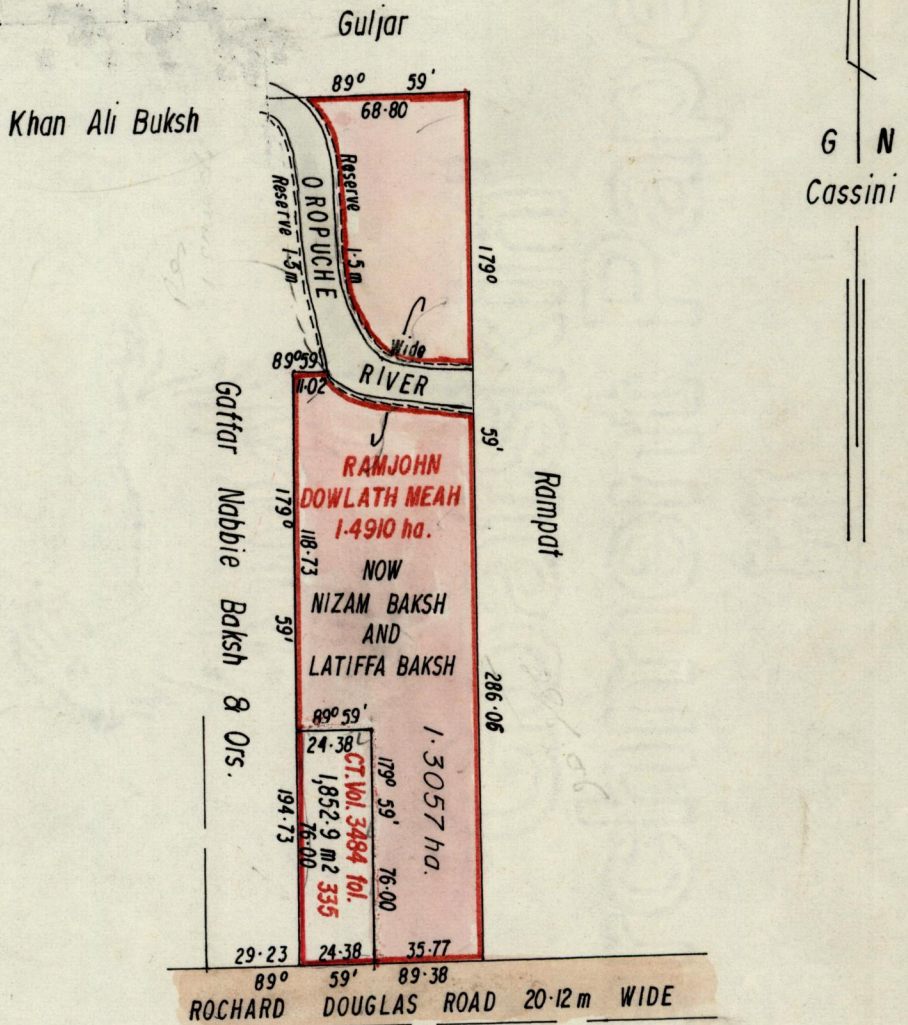
C. of T. Vol. 1706

Vol. 235

Ward of Naparima

County of Victoria

64D



Approved

Paul Charles
 Director of Surveys
 92.07.02

SCALE 1:2500

Note: To obtain compass bearings add minutes
subtract

Distances are in metres

This is a true copy of a diagram of 1.4910 ha. originally granted to RAMJOHN DOWLATH MEAH, shewing a portion coloured pink and containing 1.3057 ha. being the remainder after one previous transfer of another portion of the land. the dividing lines having been run in conformity with Rule 76 under Sec. 7(d) of Cap. 27. No. 2 and duly certified by the Director of Surveys.

Checked by *G. Ramcharan*
 11/7/92

Entered on

Winit Ramcharan
 Land Surveyor, Trinidad, 26 November 1991

Original Survey in bk. 918 fol. 74.

4h

