

No 22895

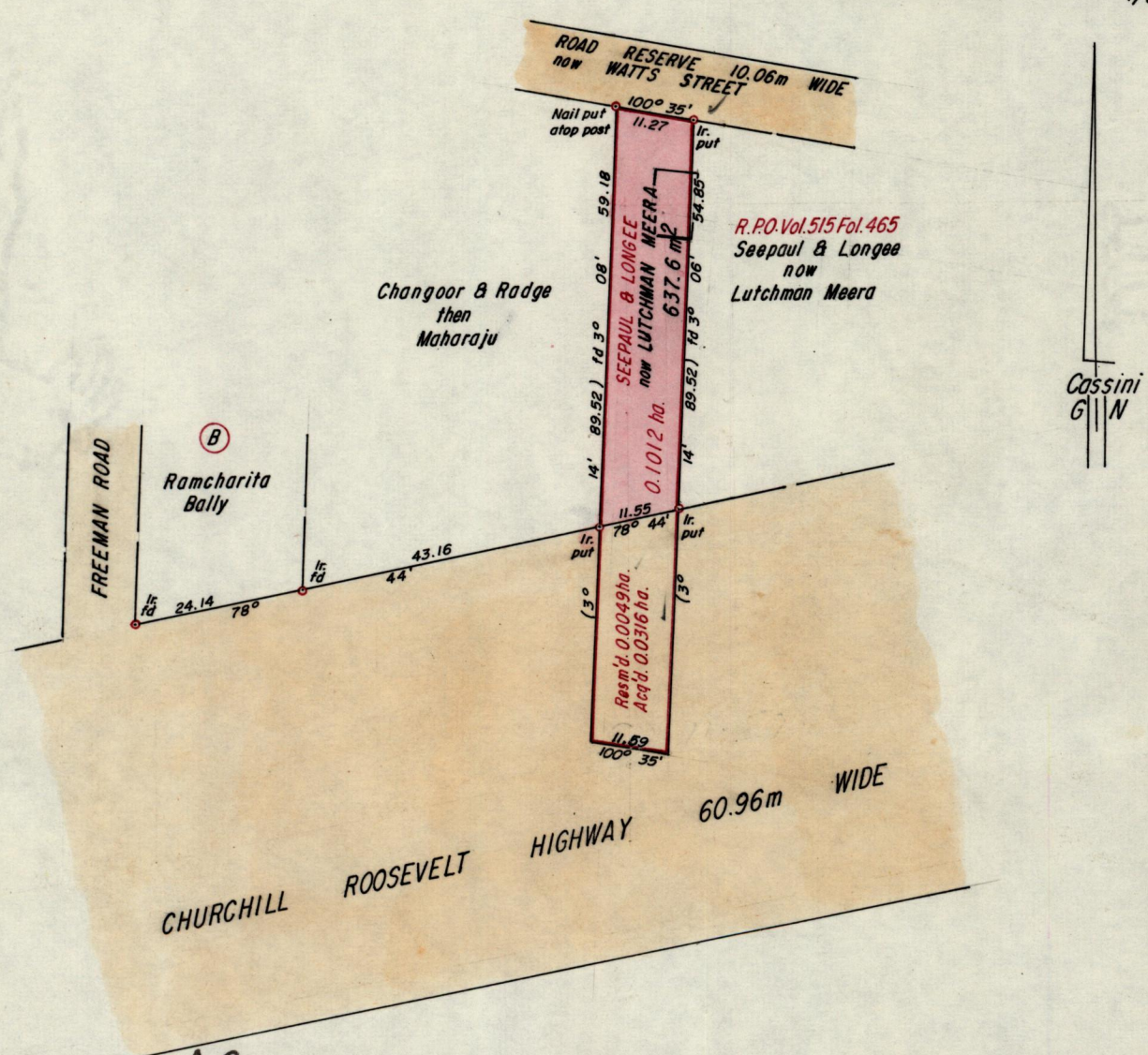
1136

218

R.P.O. Vol. 446
C.T. Vol.

Fol. 659
Fol.

Ward of Tacarigua
County of St. George
Cadastral Sheet B.18.M. $\frac{24A}{1/c}$



Approved *Paul Charles*
Director of Surveys
92-062

Bearings are based on solar observations
Note: To obtain compass bearings add/subtract

SCALE 1:1000
minutes

Distances are in Metres

PLAN of a Parcel of land coloured pink in the Ward of Tacarigua
Containing six hundred and thirty seven point six square metres
Surveyed by me, with due authority, in January 1992

I certify that I have complied with rule 76 under section 14(2)(d) of the
Land Surveyors' Ordinance 1952, and that this plan is correct.

Checked by *Ramcharita* 29/5/92 *Hy. Soma*
Entered Land Surveyor, Trinidad & Tobago 1992

Original Plan P.A. 24

818

818

818