

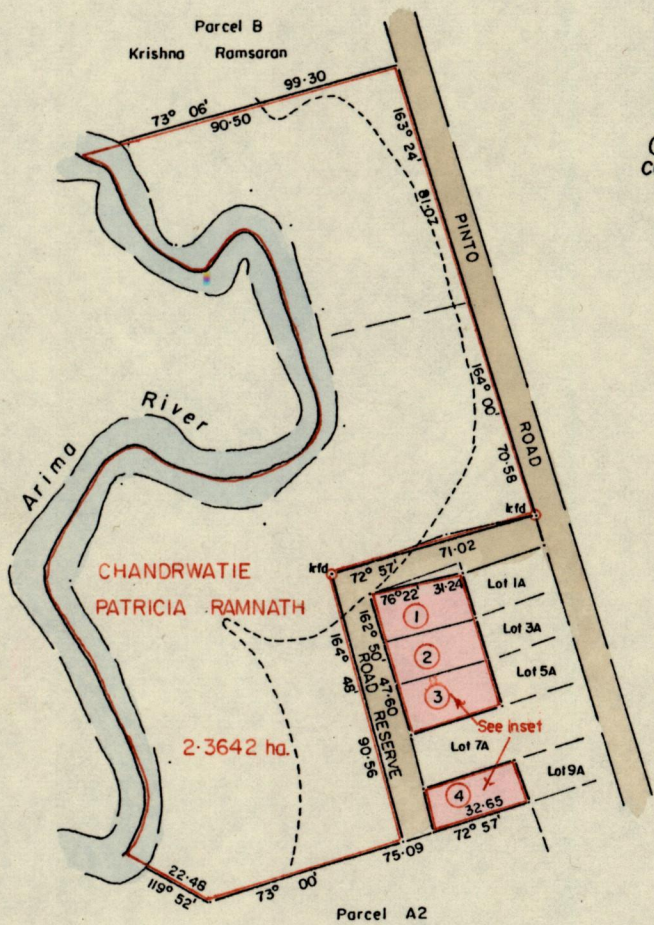
1196

213

R.P.O. Vol. 2113
C.T. Vol. 3143

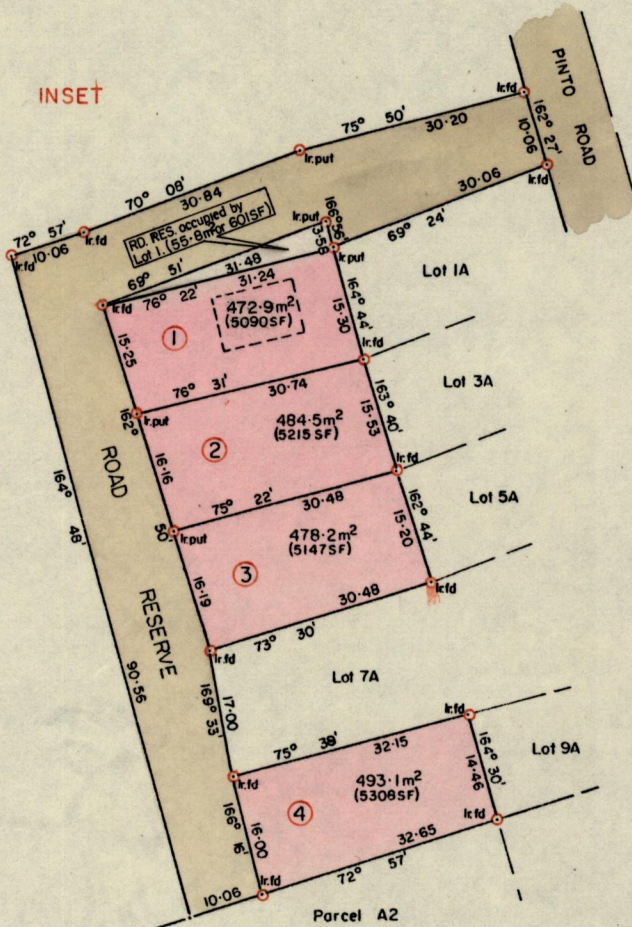
Fol. 93
Fol. 143

Ward of Arima
County of St. George
Cadastral Sheet B 25 A. 24C
2/c



G N
cassini

INSET



SCALE 1/1000
Distances are in metres

Approved

James Charles

Director of Surveys
92.05.22

Bearings are based on Solar Observations.

Note: To obtain compass bearings add/subtract

PLAN of 4 Parcels of land coloured pink
Containing

Surveyed by me, with due authority, in March 1989

I certify that I have complied with rule 76 under Section 14 (2) (d) of the Land Surveyors' Ordinance 1952, and that this plan is correct.

Checked by *G. Ramchand*
18/5/92

Entered.....

SCALE 1/2500

minutes Distances are in metres

in the Ward of Arima

Richard Howard
Land Surveyor, Trinidad 5th September 1989

Original Plan R.H. 110