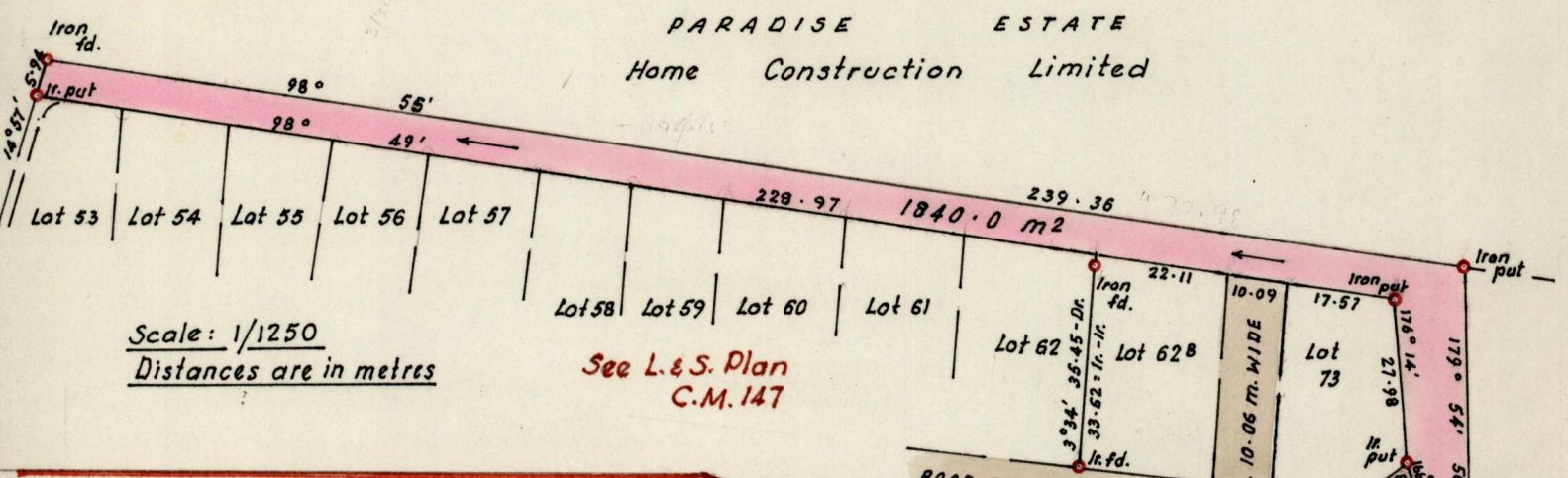
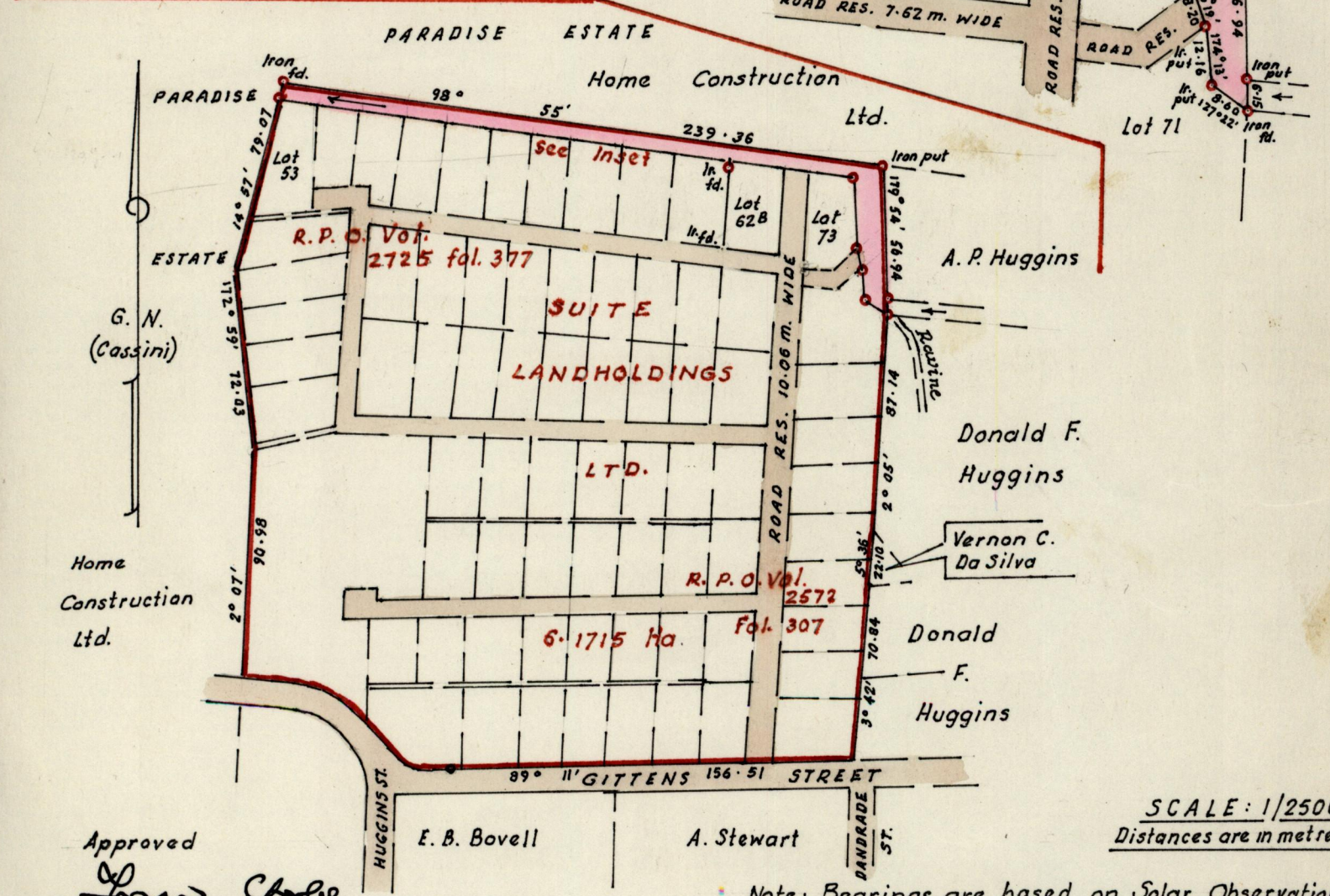


INSET



Scale: 1/1250
 Distances are in metres

See L. & S. Plan
 C.M. 147



SCALE: 1/2500
 Distances are in metres

Note: Bearings are based on Solar Observations

Approved
Paul Charles
 Director of Surveys
 92.05.06

PLAN of a Parcel of Land coloured pink, in the Ward of Tacarigua
 Containing one thousand, eight hundred & forty square metres (19805.6S.F.)
 Surveyed by me, with due authority, in October 1991
 I certify that I have complied with Rule 76 under Sec. 14 (2)(d) of the Land Surveyors'
 Ordinance 1952, and that this plan is correct.
 Checked by *[Signature]* +5-14192
 Entered on _____
 Approved *A.S. Ramona* *[Signature]* A.S. Ramona
 Land Surveyor, Trinidad. 11th November 1991.

Original Survey Bk. 980 fol. 69

3 Copies