

1196

1139

B N^o 2224

R.P.O. Vol. 424

Fol. 495

Ward of Naparima

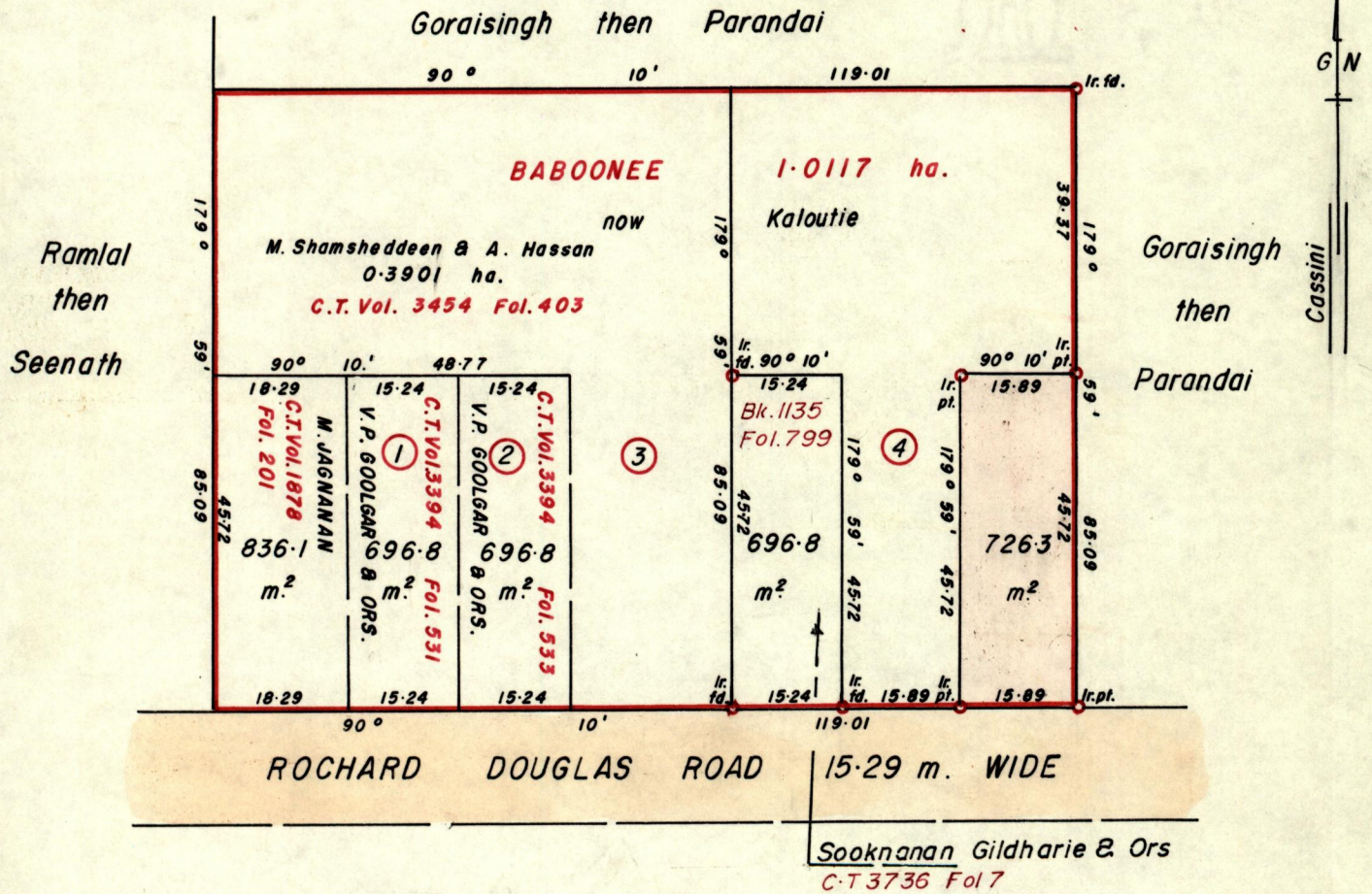
C.T. Vol. 1599

Fol. 189

County of Victoria

Bk 1227 Fol. 41

Cadastral Sheet G.14.B. ^{64D}/_{1/b}



Approved

[Signature]

Director of Surveys

Bearings are based on Solar Observations

SCALE 1:1000

Note: To obtain compass bearings add/subtract / minutes

Distances are in Metres

PLAN of a Parcel of land coloured pink in the Ward of Naparima
Containing seven hundred and twenty six point three sq.metres
Surveyed by me, with due authority, in April 1998

I certify that I have complied with rule 76 under section 14(2)(d) of the
Land Surveyors' Ordinance, 1952, and that this plan is correct.

Checked by *[Signature]*

Entered Land Surveyor, Trinidad and Tobago 30th April 1998

Original Survey Bk: 963 fol. 43



1196 v182/189