

No 25492

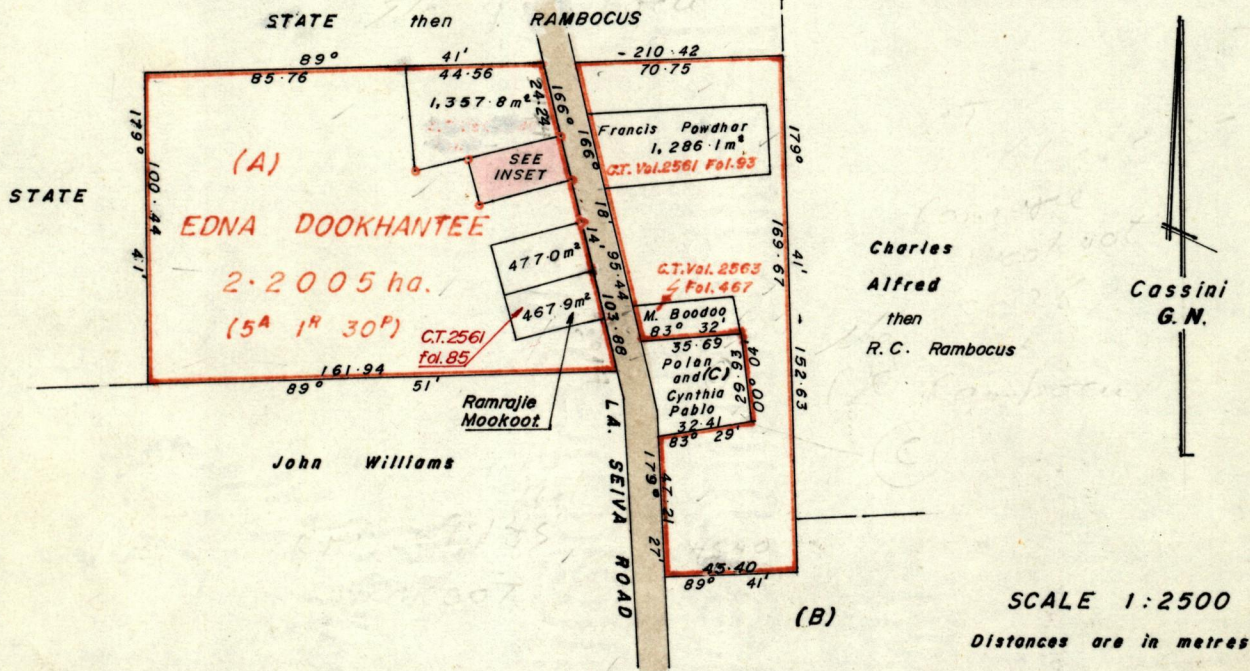
1196

1835

R.P.O. Vol. 2
C.T. Vol. 2386

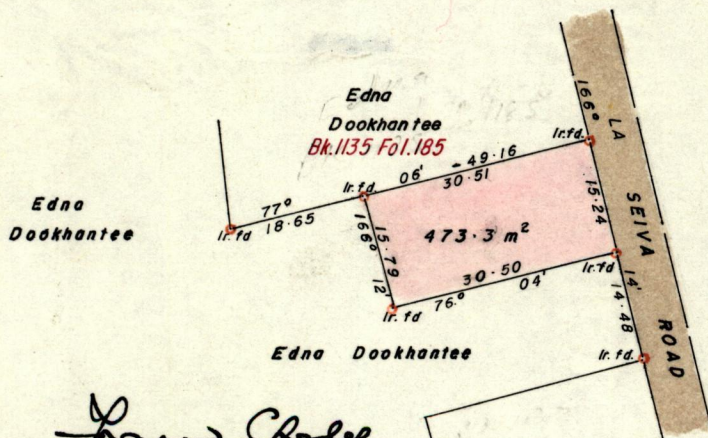
Fol. 226
Fol. 11

Ward of Manzanilla
County of St. Andrew
Cadastral Sheet C.22.K. 25F/2/b



SCALE 1:2500
Distances are in metres

INSET



Approved

Paul Charles
Director of Surveys
92.04.14

SCALE 1:1000

Note: To obtain compass bearings add/subtract 19 minutes Distances are in metres

PLAN of a Parcel of land coloured pink in the Ward of Manzanilla
Containing four hundred and seventy three point three square metres
Surveyed by me, with due authority, in October 1989

I certify that I have complied with rule 76 under section 14(2)(d) of the
Land Surveyors' Ordinance 1952, and that this plan is correct.

Checked by *G. Ramchand* 3/12/92 *H. Somanah*

Entered Land Surveyor, Trinidad and Tobago 9th September 1992

9.11
91.09.13



581 6911