

1196

15151

R.P.O. Vol. 12

Fol. 295

C.T. Vol. 1149

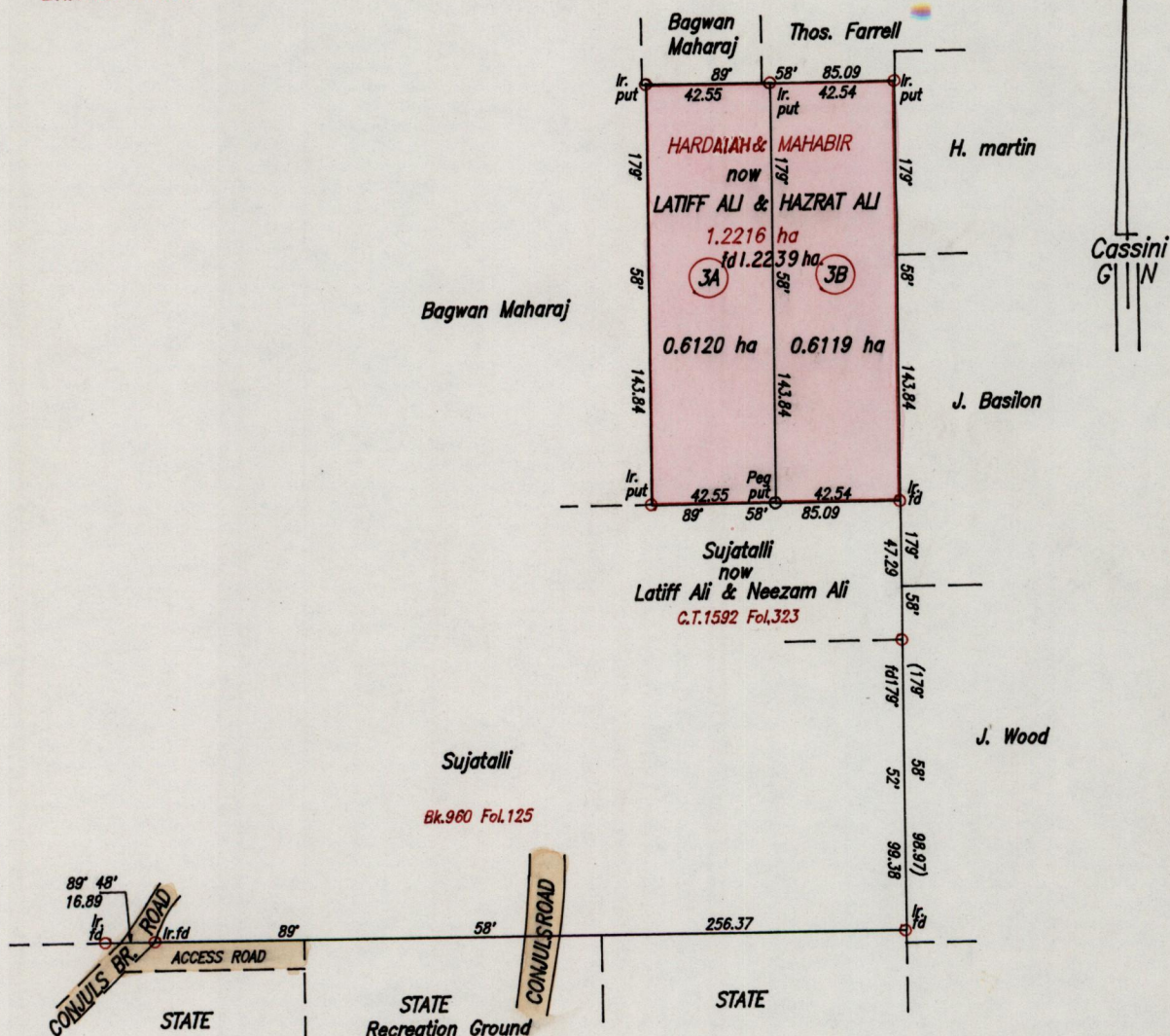
Fol. 219

Bk. 718 Fol. 58

Ward of Savana Grande

County of Victoria

Cadastral Sheet G.9.P. ^{64B} 3/a,3/c



Approved *[Signature]*

Director of Surveys

980529

SCALE 1/2500
Distances are in Metres

Bearings are based on Solar Observations

PLAN of 2 Parcels of land coloured pink in the Ward of Savana Grande
Containing together one point two two three nine hectares
Surveyed by me, with due authority, in March 1993

I certify that I have complied with rule 76 under section 14(2)(d) of the
Land Surveyor's Ordinance 1952, and that this plan is correct.

Checked by *[Signature]*

Entered Land Surveyor, Trinidad & Tobago. 12/02/19. 98

PATH=C:\L-Alt\Latiff1.dwg

Original Survey Bk. 718 fol. 58

