

No 16156

1196

141

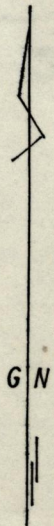
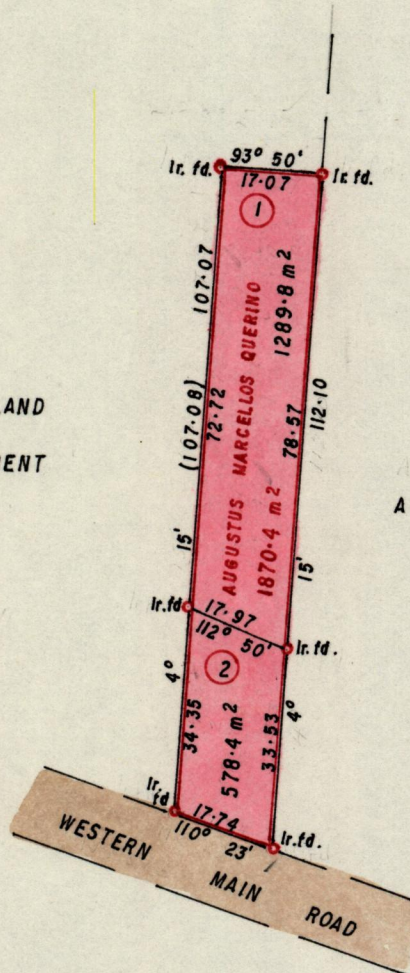
R.P.O. Vol. 288  
C.T. Vol. 2958

Fol. 457  
Fol. 203

Ward of Diego Martin  
County of St George  
Cadastral Sheet  $\frac{12F}{1/d}$  (A.19.B)

BAIN LAND  
DEVELOPMENT  
CO. LTD

A. M. QUERINO



*Handwritten notes:*  
1/25/1/91

Approved *Garud Charles*  
Director of Surveys  
91.11.26

SCALE 1/1250  
minutes

Distances are in Metres

Note: To obtain compass bearings add/subtract  
PLAN of 2 Parcels of land coloured pink in the Ward of Diego Martin  
Containing together One Thousand, Eight Hundred and Sixty-eight point two Square Metres  
Surveyed by me, with due authority, in November 1987

I certify that I have complied with rule 76 under section 14(2)(d) of the  
Land Surveyors' Ordinance 1952, and that this plan is correct.

Checked by *Shankar* *Shankar*

Entered ..... Land Surveyor, Trinidad ..... 14<sup>th</sup> July ..... 19.9.87

*Handwritten notes:*  
A.H.  
91.09.18

Previous Survey in No. 1148 Feb 60.

124  
101

883  
833

