

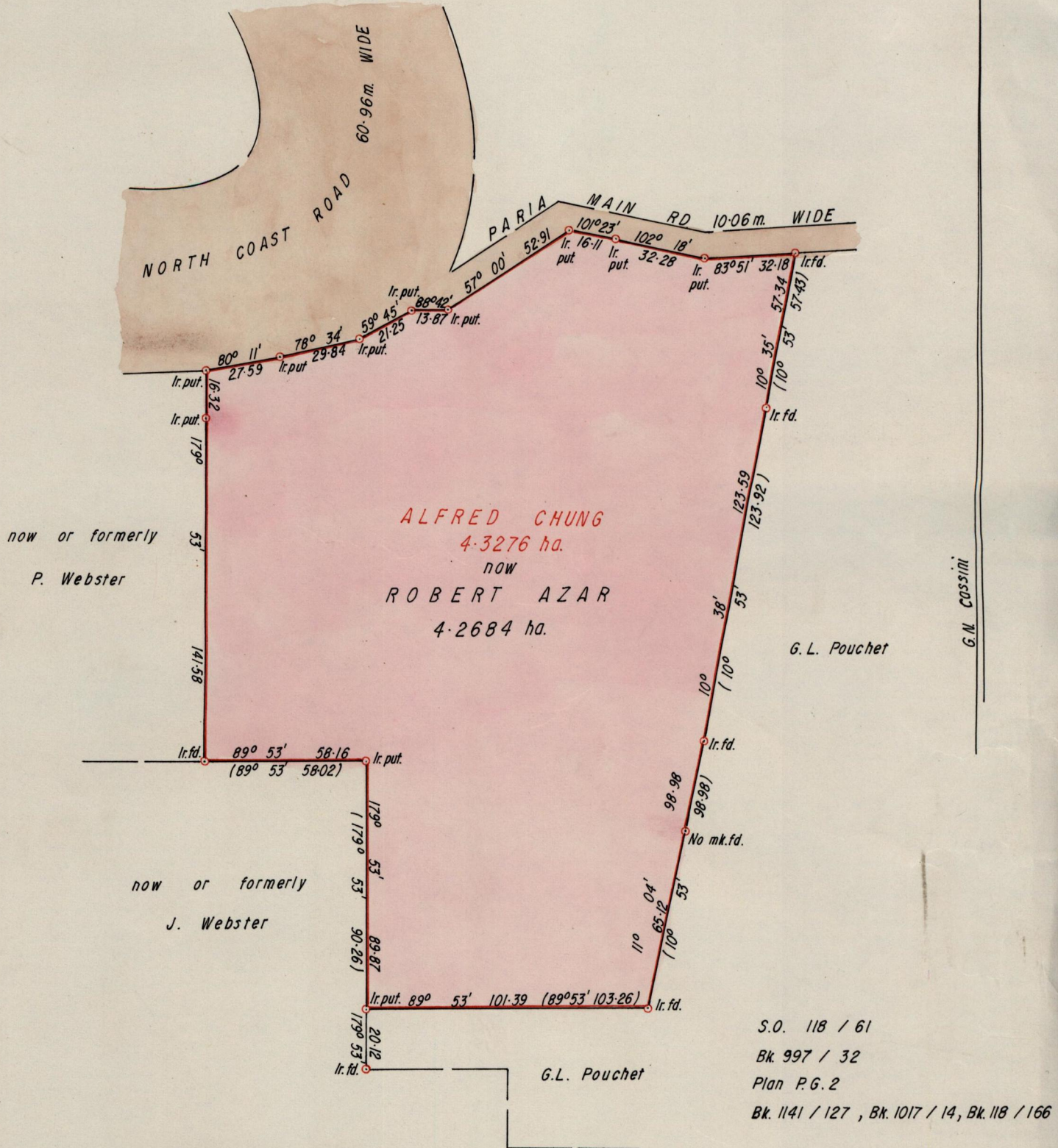
1196

Cadastral Sheet $\frac{3F}{4/c \ 84/d}$ B. 7. L.

14

R. P. O. Vol. 338 fol. 361
R. P. O. Vol. 350 fol. 509
R. P. O. Vol. 556 fol. 331
C. T. Vol. 2292 fol. 361

Ward of Blanchisseuse
County of St. George



Approved *P. Achille*
Director of Surveys
98 03 20

Scale 1 / 2000
Distances are in metres

Bearings are based on Solar Obs.

PLAN of a parcel of land coloured pink in the Ward of Blanchisseuse
Containing four point two six eight four hectares
Re defined by me with due authority in August and September 1997
I certify that I have complied with rule 76 under section 14(2)(d) of the
Land Surveyors' Ordinance 1952 and that this plan is correct.

Checked by *M.P. 98.3.11*
Ent. on

Murchison Pierre
Land Surveyor, Trinidad & Tobago

8th October, 1997

Original Survey Bl. 997 fol 32

