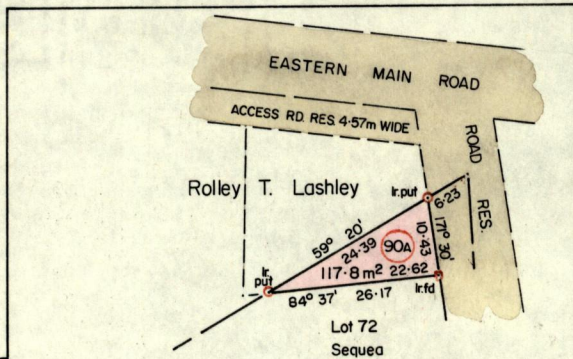
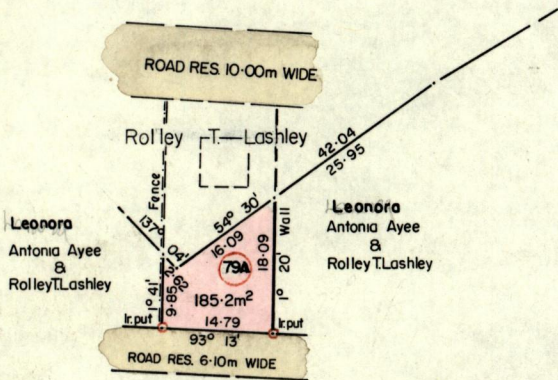


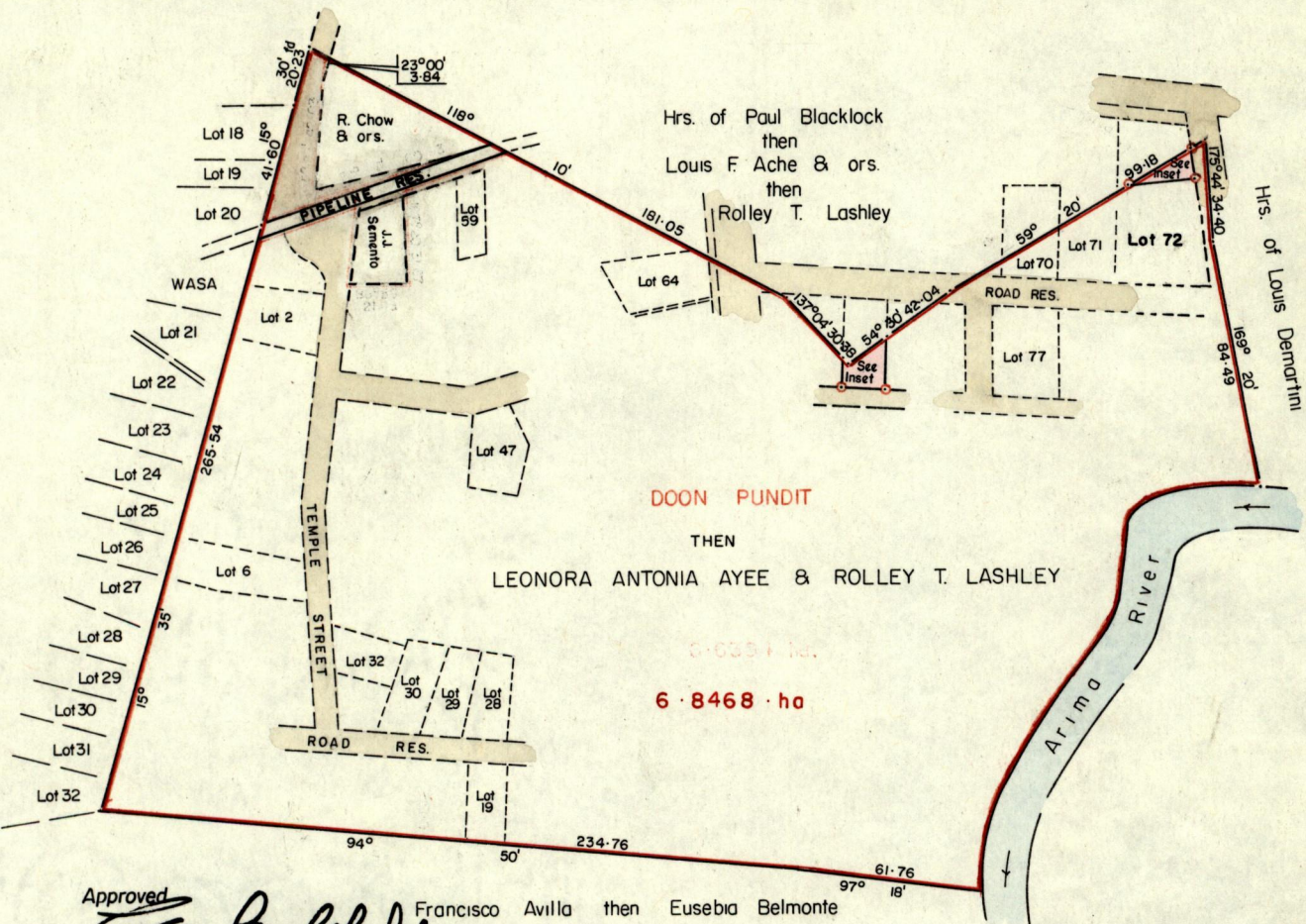
Lot No.	Name	Area m ²	Cof T.
2	F. & C. Marcano	550.1	3 198 / 149
29	Donald Baptiste	371.6	3229 / 215
30	Donald Baptiste	456.3	3229 / 223
28	Donald Baptiste	363.5	3229 / 231
59	Gloria Hinds & A. Hutchinson	377.2	3230 / 447
32	D. Baptiste & P.C. Lacoa	314.1	3231 / 91
47	H. Gophtar & S. Maraj	485.8	3379 / 421
72	E.T. Sequea	839.4	3666 / 99



INSET



SCALE 1/1000
Distances are in metres



Approved *Francisco Avilla then Eusebia Belmonte*
Director of Surveys
7 9805-28

SCALE 1/2500

Distances are in metres.

To obtain compass bearings add 10 minutes.

PLAN of 2 Parcels of land coloured pink in the Ward of Arima

Containing one hundred and eighty five point two square metres & one hundred and seventeen point eight square metres respectively.
Surveyed by me, with due authority in January 1995

I certify that I have complied with rule 76 under Section 14 (2) (d) of the Land Surveyors' Ordinance 1952, and that this plan is correct.

Checked by *A. D. 9.4.98*

Entered

Land Surveyor, Trinidad
27th January 1995

Original survey Bk. 1005 fol. 42

