

1195

983

R.P.O. Vol. 205 Fol. 641

Cadastral Sheet G. 16. H., 73A
1/c

C.T. Vol. 4451 Fol. 355

Ward of Siparia

REMAINING PORTION PLAN Filed in R.P.O. Vol. 4378 Fol.211

County of St. Patrick

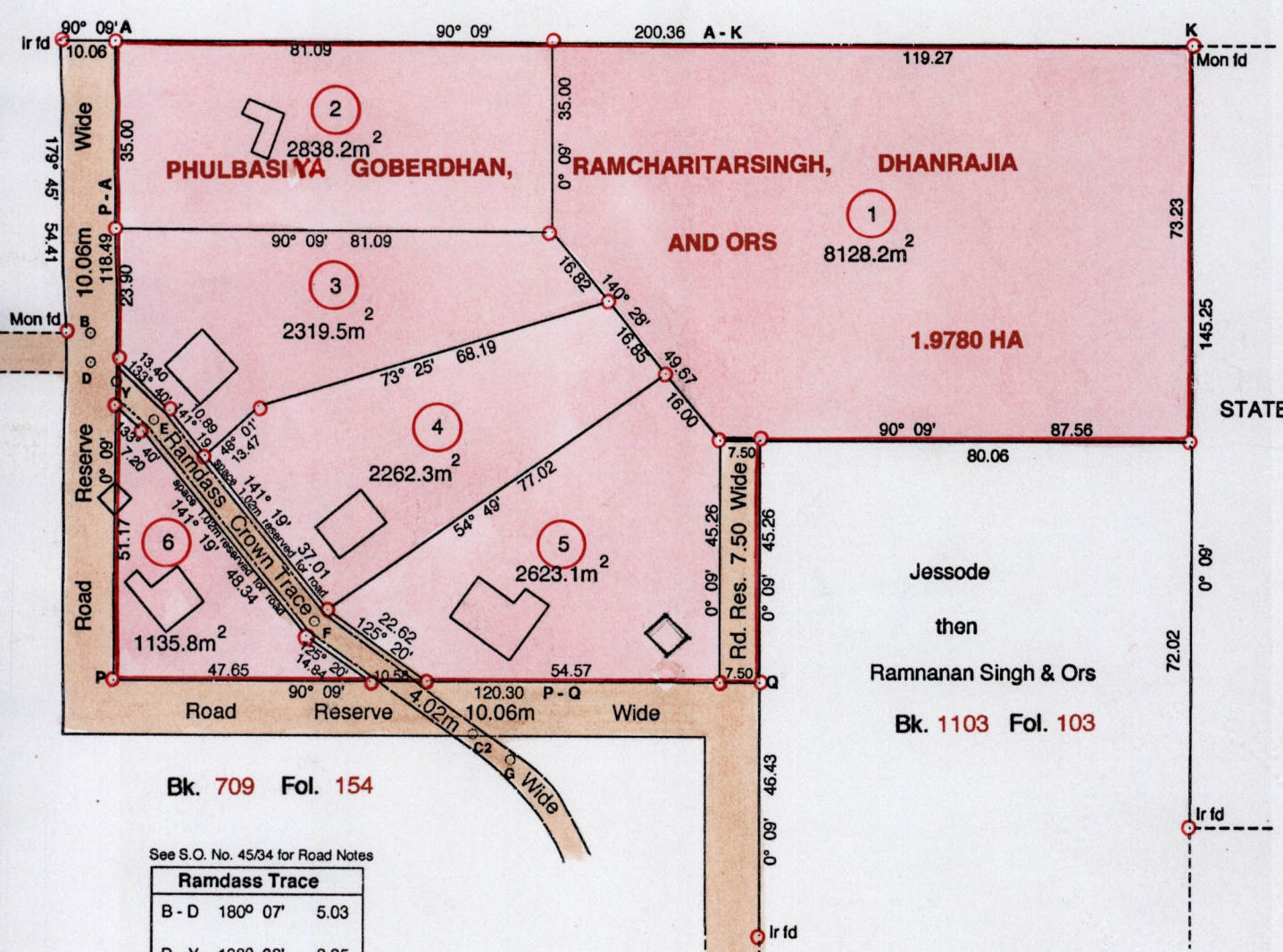
U.P.R.N. No.

Bk. 483 Fol. 74

G.N.

Cassini

STATE



Bk. 709 Fol. 154

See S.O. No. 45/34 for Road Notes

Ramdass Trace		
B - D	180° 07'	5.03
D - Y	133° 38'	8.85
Y - E	133° 38'	9.98
E - F	141° 18'	48.12
F - C2	125° 18'	36.19
C2 - G	125° 18'	8.39



Approved
Director of Surveys

○ Denotes Iron Put unless otherwise stated
Bearing are Cassini Grid based on Solar Obs.

Distances are in Metres
SCALE 1 : 1250

PLAN of 6 Parcels of land coloured pink in the **Ward of Siparia**
Containing together **one point nine three zero seven hectares**

Surveyed by me, with due authority, in September 1994

In accordance with Regulation 25(1) of the Land Surveyors' Regulations 1998, I certify that this plan is correct

Entered by

Checked by

Gerald Lewis
Trinidad and Tobago Land Surveyor/ 2004