

Fol. 179

R.P.O. Vol. 182

C.T. Vol.

Fol.

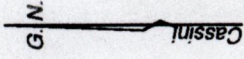
U.P.R.N. No.

Cadastral Sheet G. 16. N., 72C
4/c

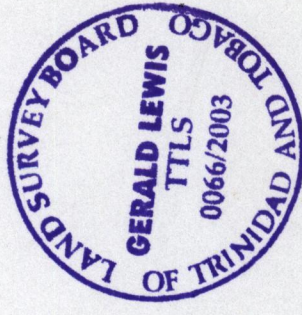
Ward of Erin

County of St. Patrick

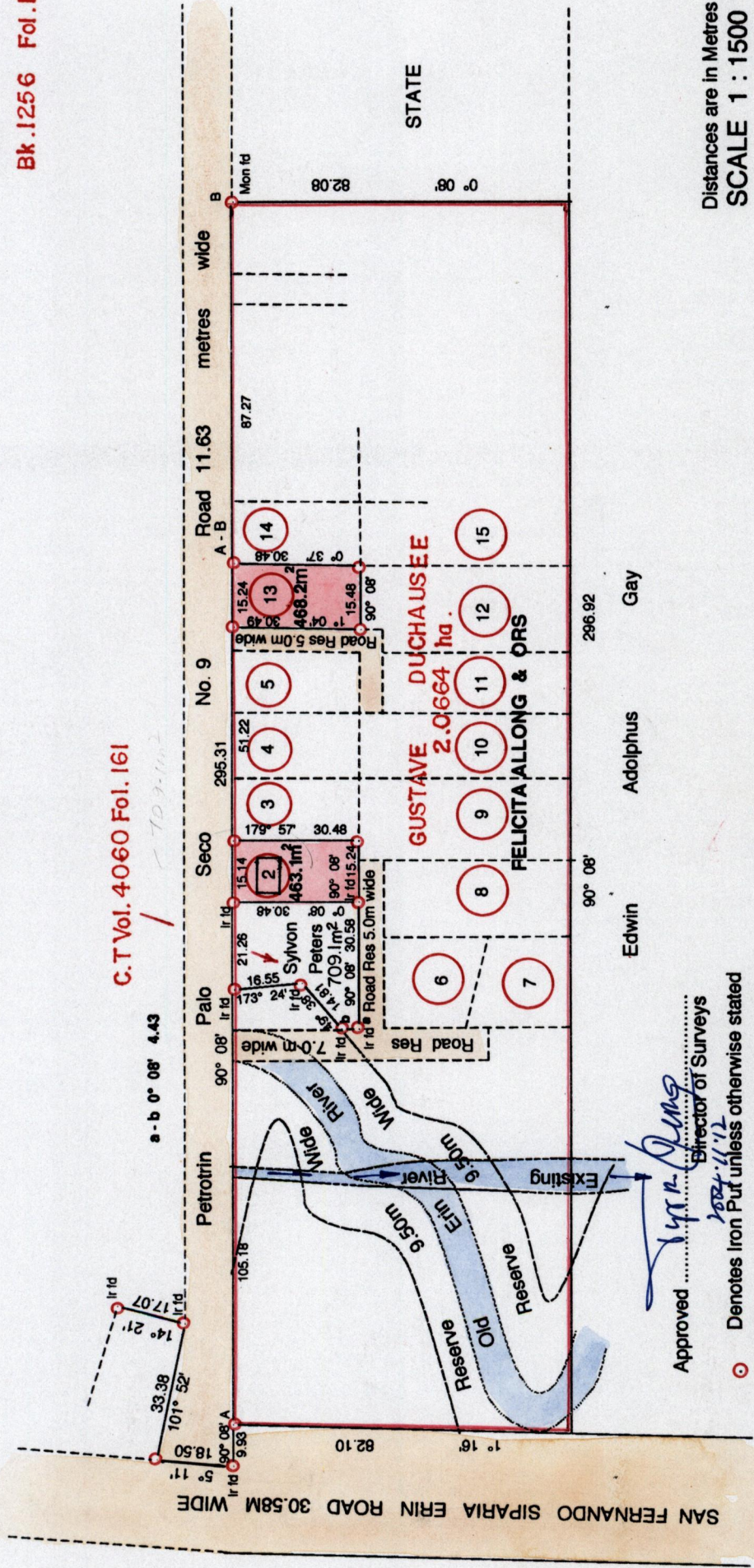
Bk. 1256 Fol. 102



1195



97



Distances are in Metres
SCALE 1 : 1500

Approved *[Signature]* Director of Surveys
2004-11-12

○ Denotes Iron Put unless otherwise stated
Bearings are Cassini Grid based on Solar Obs.

PLAN of 2 parcels of land coloured pink in the Ward of Erin
Containing together **nine hundred and thirty one point three square metres**
Surveyed by me, with due authority, in September 2000

In accordance with Regulation 25(1) of the Land Surveyors' Regulations, I certify that this plan is correct

Entered by.....
Checked by *[Signature]*.....

[Signature]
Trinidad and Tobago Land Surveyor 2/12/2003