

1195

82

R.P.O. Vol. 104 Fol. 311

REMAINING PORTION

Ward of Siparia

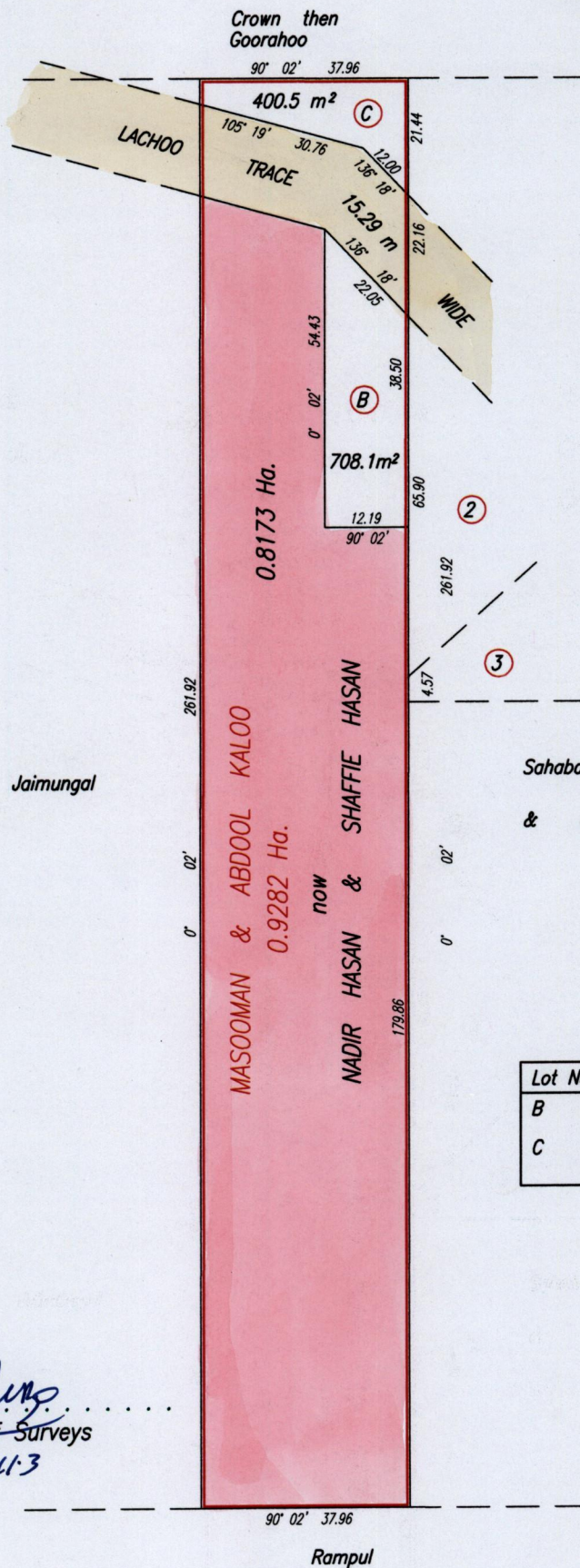
C.T. Vol. 1065 Fol. 245

County of St. Patrick

Cadastral Sheet G.13.J. 63F
3/a

Bk. 1227 fol 216

Bk. 393 fol 200



Lot No.	Name	C.T. Vol.	fol.
B	Jamil Hassan	3829	73
C	Fazal Hassan & Cherrie-Ann Hassan	3795	49

Approved : *[Signature]*
 Director of Surveys
 2004.6.13

SCALE 1:1250

Distances are in Metres

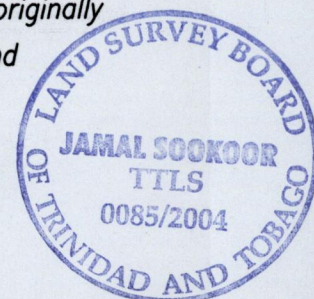
Bearings are Cassini Grid. To obtain compass bearings subtract 2 minutes.

This is a true copy of a diagram of zero point nine two eight two hectares originally transferred to Masooman & Abdool Kalloo, showing a portion coloured pink and containing zero point eight one seven three hectare being the remainder after two previous transfers of another portion of land.

In accordance with Regulation 25(1) of the Land Surveyors' Regulations 1998, I certify that this plan is correct.

Checked by *[Signature]*
2004.10.04.

[Signature]



Entered

Trinidad & Tobago Land Surveyor 11th July . . 2004