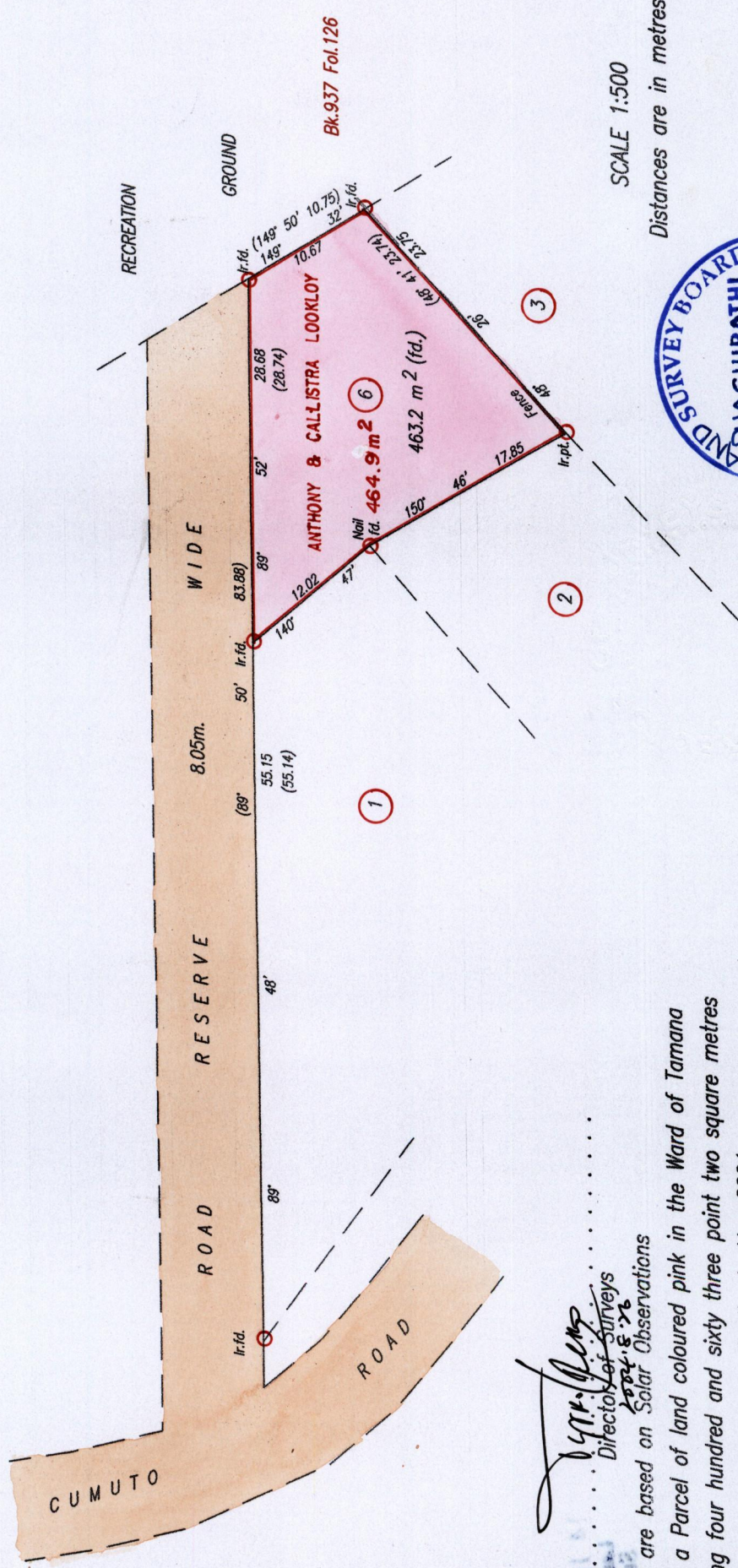
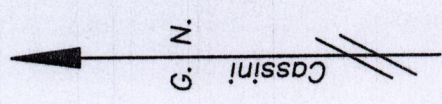


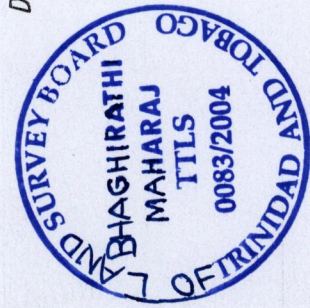
Cadastral Sheet C.21.M. 25D
 2/d
 Ward of Tamana
 County of St. Andrew

Fol. 205
 Fol. 325

R.P.O. Vol. 1
 C.T. Vol. 3257



SCALE 1:500
 Distances are in metres



Approved *[Signature]*
 Director of Surveys
 Bearings are based on Solar Observations
 PLAN of a Parcel of land coloured pink in the Ward of Tamana
 Containing four hundred and sixty three point two square metres
 Surveyed by me, with due authority, in May 2004
 In accordance with Regulation 25 (1) of the Land Surveyors' Regulations 1998,
 I certify that this plan is correct.

Checked by *[Signature]*
 Bhaghirathi Maharaj

Entered on Trinidad & Tobago Land Surveyor 4th June 2004.