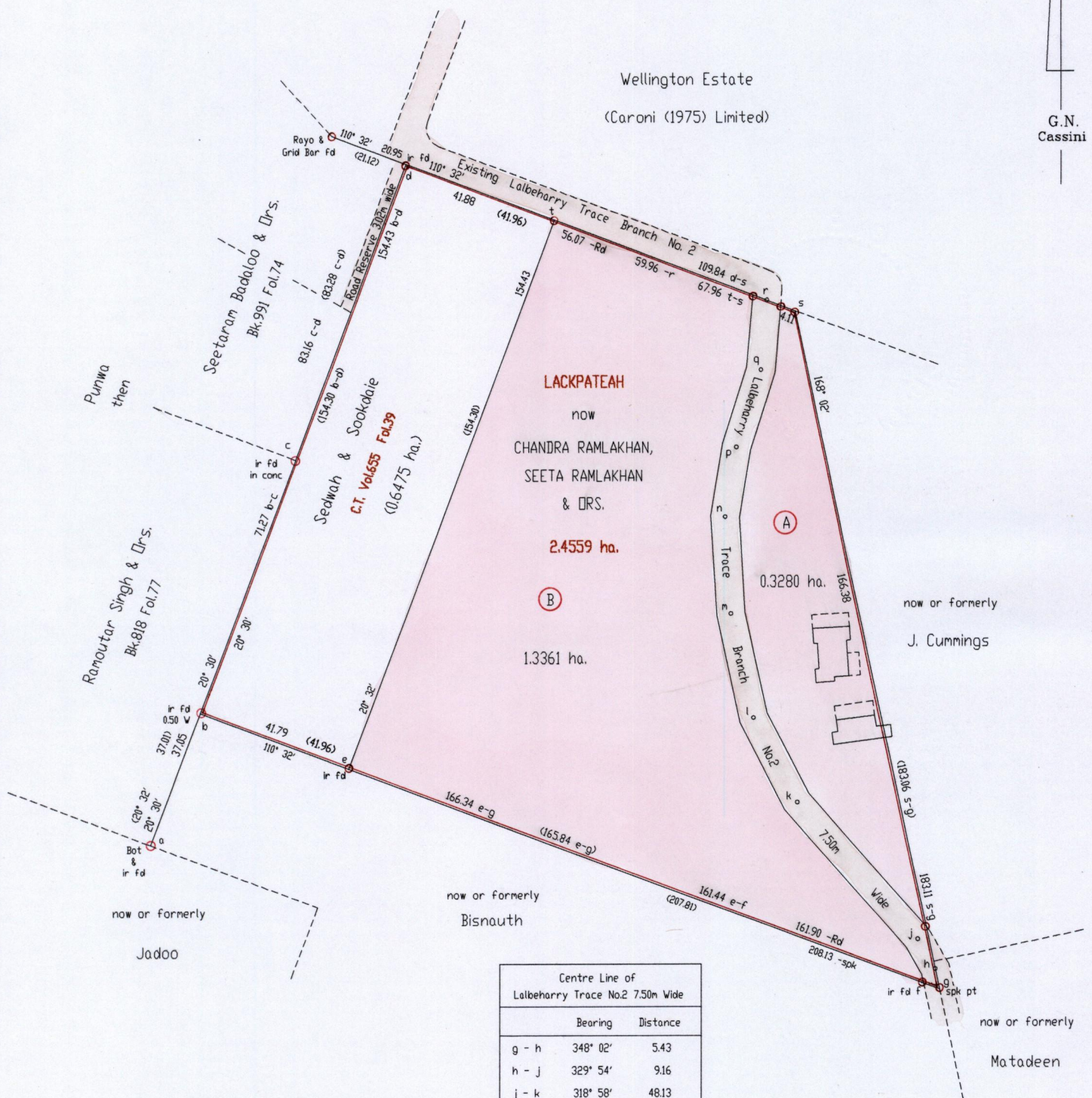


R.P.O. Vol. 25 Fol. 423
 C.T. Vol. 652 Fol. 229
 U.P.R.N. No.:

Ward of Naparima
 County of Victoria
 Cadastral Sheet G.8.0. $\frac{63C}{3/d}$

G.N.
 Cassini



Approved *[Signature]*
 Director of Surveys
 2004 8 26

References: Bk.722 Fol.352
 Bk.722 Fol.354
 Bk.455 Fol.217

SCALE 1: 1500

Distances are in metres

○ Denotes iron put except otherwise stated

Bearings are Cassini Grid based on Solar Observations

PLAN of 2 parcels of land coloured pink in the Ward of Naparima
 Containing together one point six six four one hectares
 Surveyed by me, with due authority, in March 2000

In accordance with Regulation 25(1) of the Land Surveyors' Regulations 1998, I certify that this plan is correct.

Checked by *[Signature]*
 Entered

[Signature]
 30/8/2002
 Trinidad & Tobago Land Surveyor

