

1195

47

1195/47

R.P.O. Vol. 415 Fol. 685

REMAINING PORTION

Ward of Siparia

C.T. Vol. Fol.

County of St. Patrick

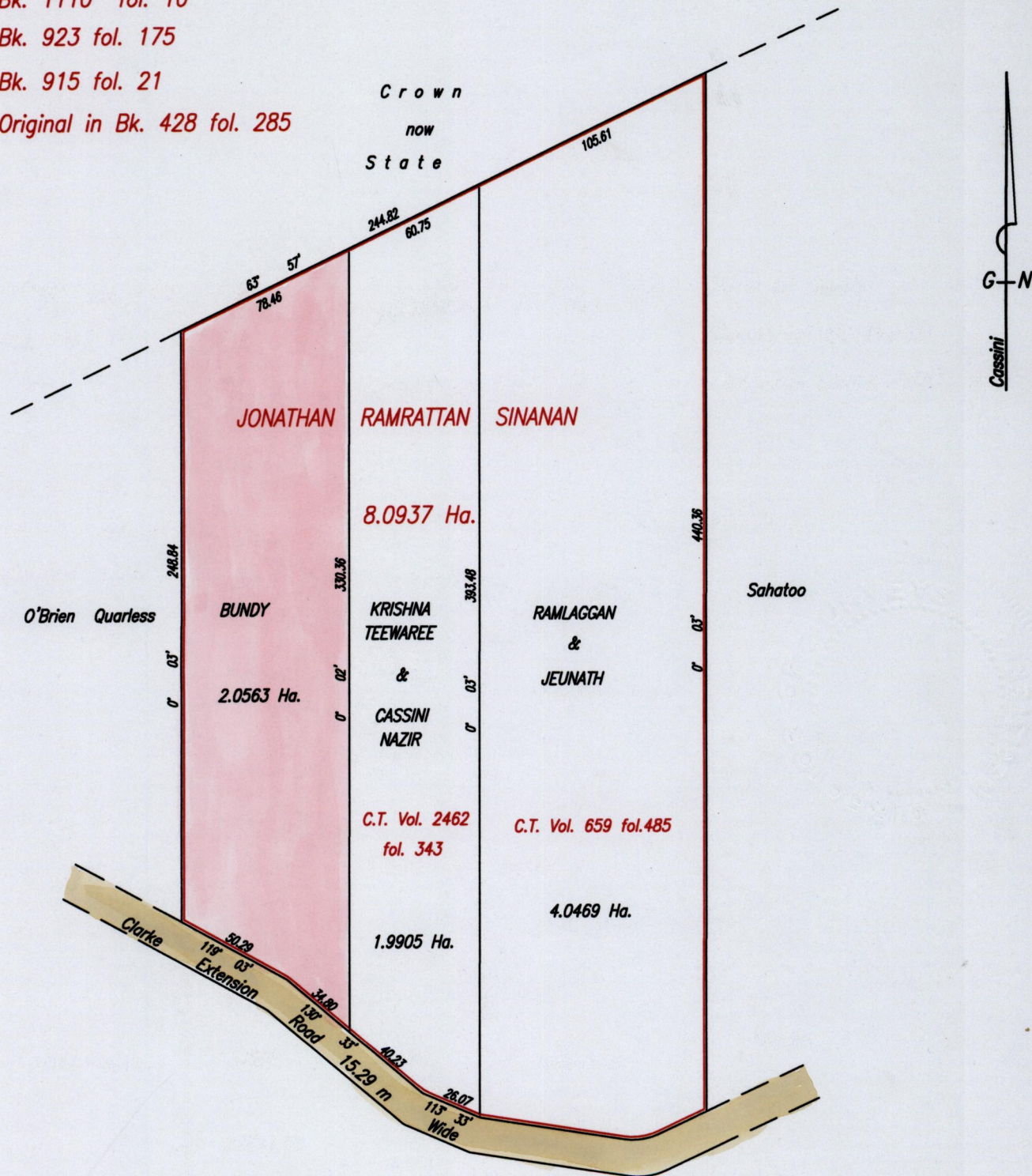
Cadastral Sheet G.13.L. 63F
4/a

Bk. 1110 fol. 10

Bk. 923 fol. 175

Bk. 915 fol. 21

Original in Bk. 428 fol. 285



Approved : *[Signature]*
Director of Surveys
2004-10-18

SCALE 1:2500

Distances are in Metres

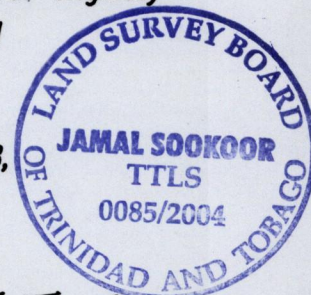
Bearings are Cassini Grid. To obtain compass bearings subtract 3 minutes.

This is a true copy of a diagram of eight point zero nine three seven hectares originally granted to Jonathan Ramrattan Sinanan, showing a portion coloured pink and containing two point zero five six three hectares being the remainder after two previous transfers of another portion of land.

In accordance with Regulation 25(1) of the Land Surveyors' Regulations 1998, I certify that this plan is correct.

Checked by *[Signature]*

[Signature]



Entered

Trinidad & Tobago Land Surveyor 11th July . . . 2004