

1195

1195/34

34

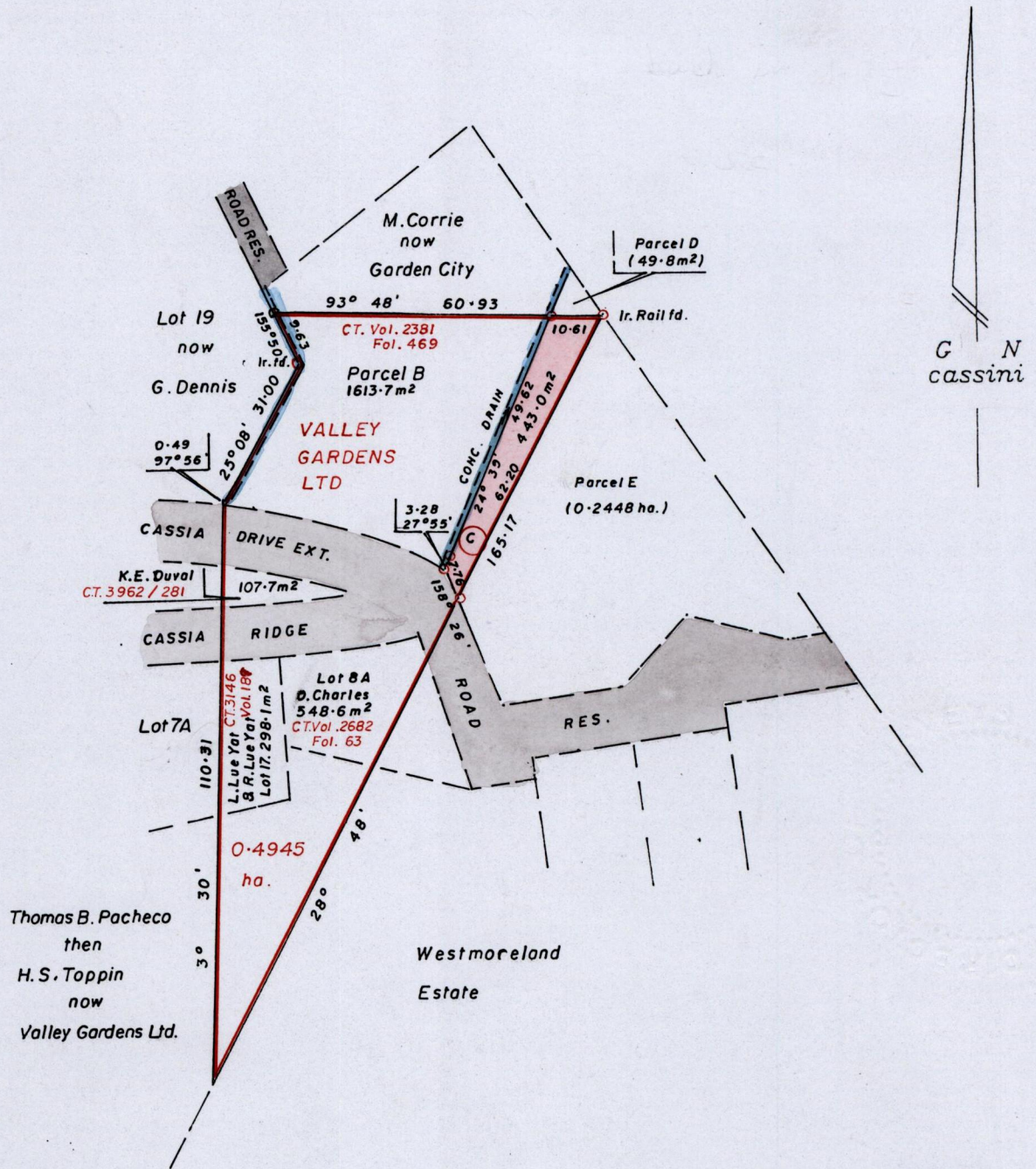
Cadastral Sheet A.14.L. $\frac{13A}{3/c}$

R.P.O Vol. 42 Fol. 443

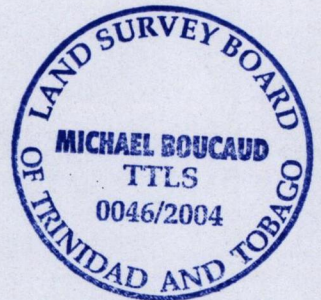
Ward of Diego Martin

C.T. Vol. 636 Fol. 317

County of St. George



Approved
[Signature]
 Director of Surveys
 2004.9.15



NOTE: Parcels C and D to be amalgamated to Parcel E

Iron put at each corner except otherwise indicated

Note: To obtain compass bearings subtract 3 minutes.

SCALE : 1 / 1250

Distances are in metres

PLAN of a Parcel of land coloured pink in the Ward of Diego Martin
 Containing four hundred and forty three point zero square metres

Surveyed by me with due authority in July 2000.

In accordance with Regulation 25(1) of the Land Surveyors' Regulations 1998.

I certify that this plan is correct.

Checked by *[Signature]* 10.9.04.

[Signature] TTLS

Entered.....

Trinidad & Tobago Land Surveyor..... 15th March 2004