

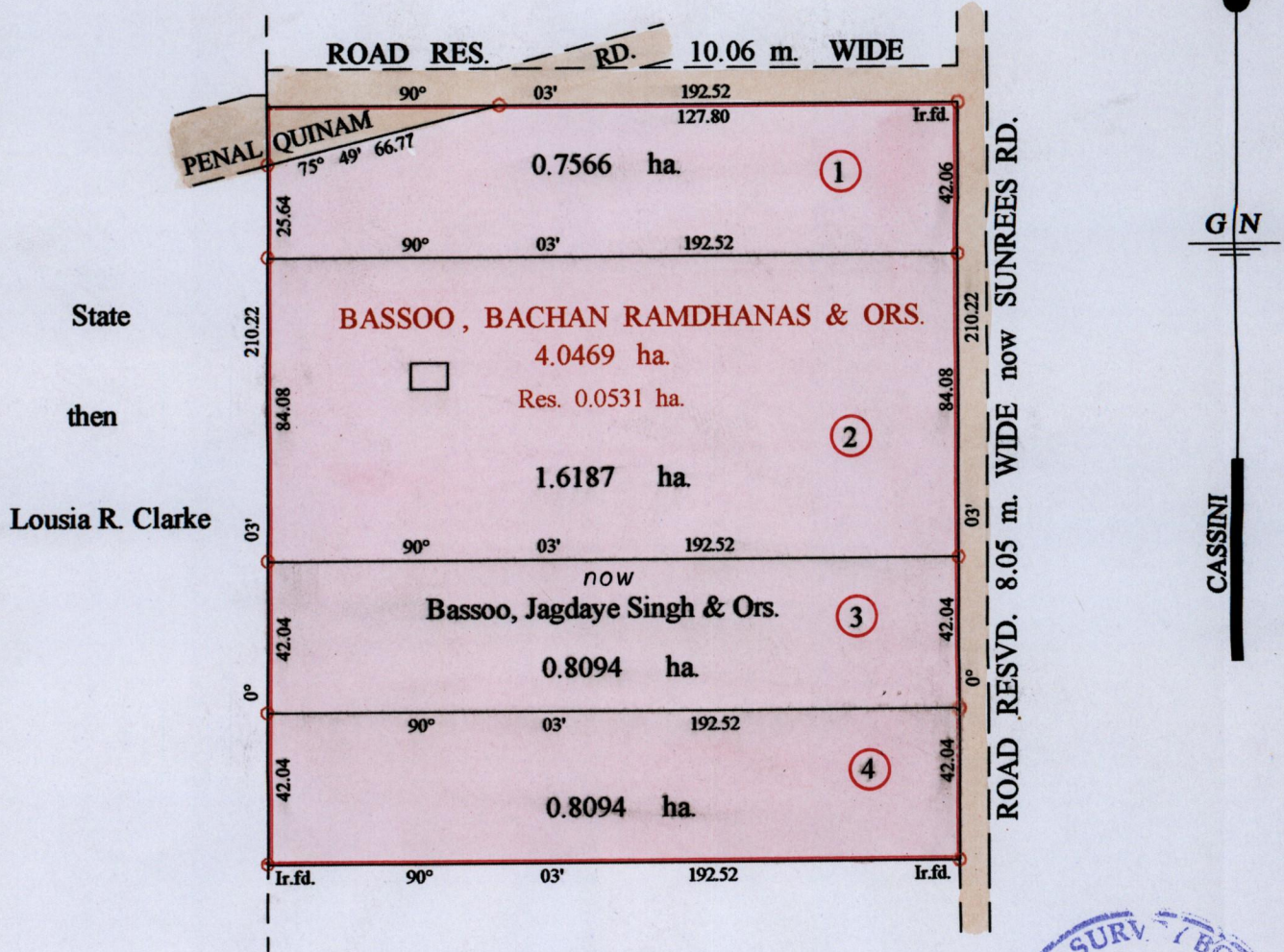
1195 / 275

275

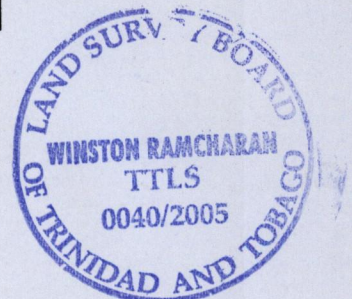
R.P.O. Vol. 98 fol. 41
C.T. Vol. 4343 fol. 283

Ward of Siparia
County of St. Patrick
Cadastral Sheet (G. 13. M.) $\frac{63 E}{4/d}$

Bk. 391 fol. 94
K. J. 5



Pet'd for by Radah



Approved *[Signature]*
Director of Surveys
2005-6-27

○ Denotes Iron Put Except
Otherwise Stated

SCALE : 1 : 2000

Note: Bearings are cassini grid based on solar observations Distances are in metres
PLAN of 4 Parcels of land coloured pink in the Ward of Siparia
Containing together three point nine nine four one hectares
Surveyed by me, with due authority, in March 2004
In accordance with Regulation 25 (1) of the Land Surveyors' Regulations 1998,
I certify that this plan is correct.

Checked by *[Signature]* Winston Ramcharan
Trinidad & Tobago Land Surveyor

Entered on 11th May 2005