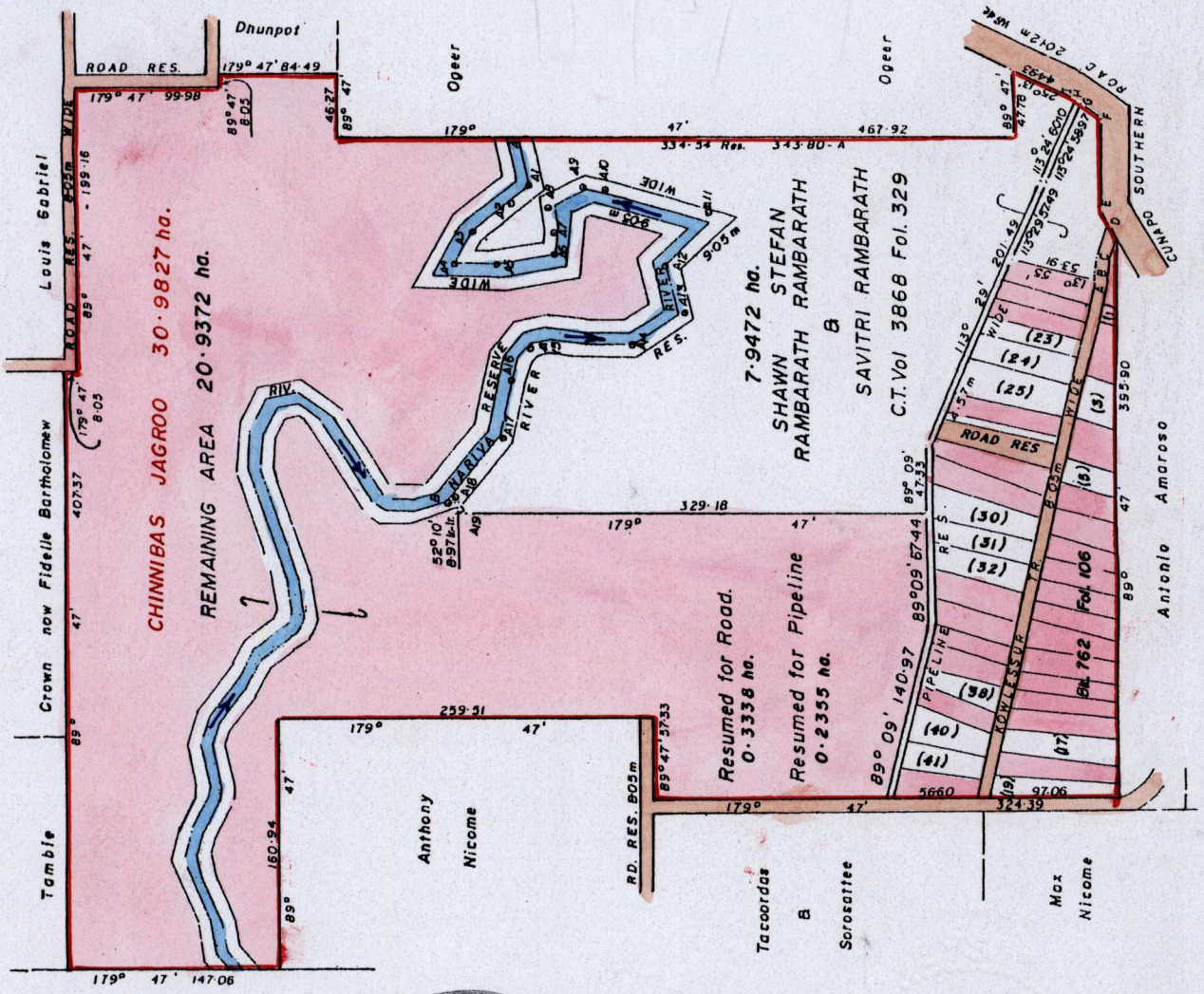


Cadastral Sheet (E.12.1.&M) 45 C / 1/c  
Ward of Charuma & Turure  
County of Nariva & St. Andrew

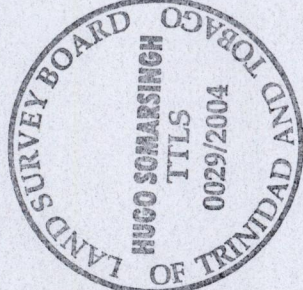
REMAINING PORTION

Fol. 277  
Fol. 533

R.P.O. Vol. 166  
C.T. Vol. 2484



Central Range Reserve



A-B 89° 09'	5.17	63.45
B-C 96° 09'	8.84	16.30
C-D 115° 45'	26.22	4.69
D-E 80° 10'	10.72	3.71

- (1) C.T. Vol. 3868 Fol. 337 SAVITRI RAMBARATH & DRS 632.4m<sup>2</sup>
- (2) C.T. Vol. 3784 Fol. 35 OTTLEY BAWSH & BAWSH 865.2m<sup>2</sup>
- (3) C.T. Vol. 4114 Fol. 301 SONYA PAUL & HENRY PAUL 746.3m<sup>2</sup>
- (4) C.T. Vol. 3323 Fol. 111 RAMSURHAG RAMRATAN & DOLLY RAMRATAN 1,190.1m<sup>2</sup>
- (5) C.T. Vol. 3258 Fol. 15 KRISHNA PATTOO & KAMLA PATTOO 1,808.3m<sup>2</sup>
- (6) C.T. Vol. 3328 Fol. 378 RAMLATTAN SINGH & MARY RAMLATTAN SINGH 1,160.4m<sup>2</sup>
- (7) C.T. Vol. 3778 Fol. 37 FENRICK WALCOTT & MARLON WALCOTT 1,546.6m<sup>2</sup>
- (8) C.T. Vol. 3323 Fol. 111 KISHA ALI C.T. Vol. 4047 Fol. 385 1,381.1m<sup>2</sup>
- (9) ROOPAL BEADUSEE & DRS C.T. Vol. 4020 Fol. 485 1,098.2m<sup>2</sup>
- (10) FELIX T. SERRETTE & MOLLY C. SERRETTE C.T. Vol. 3943 Fol. 127 802.4m<sup>2</sup>
- (11) C.T. Vol. 3764 Fol. 275 JEROME WALLACE & ELIZABETH WALLACE 1,052.4m<sup>2</sup>
- (12) C.T. Vol. 4185 Fol. 357 SHARAZ ALI & RADICA RAMKULAWAN 963.0m<sup>2</sup>
- (13) C.T. Vol. 3328 Fol. 378 RAMLATTAN SINGH & MARY RAMLATTAN SINGH 1,160.4m<sup>2</sup>
- (14) C.T. Vol. 3328 Fol. 378 RAMLATTAN SINGH & MARY RAMLATTAN SINGH 1,160.4m<sup>2</sup>
- (15) C.T. Vol. 3328 Fol. 378 RAMLATTAN SINGH & MARY RAMLATTAN SINGH 1,160.4m<sup>2</sup>
- (16) C.T. Vol. 3328 Fol. 378 RAMLATTAN SINGH & MARY RAMLATTAN SINGH 1,160.4m<sup>2</sup>
- (17) C.T. Vol. 3328 Fol. 378 RAMLATTAN SINGH & MARY RAMLATTAN SINGH 1,160.4m<sup>2</sup>
- (18) C.T. Vol. 3328 Fol. 378 RAMLATTAN SINGH & MARY RAMLATTAN SINGH 1,160.4m<sup>2</sup>
- (19) C.T. Vol. 3328 Fol. 378 RAMLATTAN SINGH & MARY RAMLATTAN SINGH 1,160.4m<sup>2</sup>
- (20) C.T. Vol. 3328 Fol. 378 RAMLATTAN SINGH & MARY RAMLATTAN SINGH 1,160.4m<sup>2</sup>
- (21) C.T. Vol. 3328 Fol. 378 RAMLATTAN SINGH & MARY RAMLATTAN SINGH 1,160.4m<sup>2</sup>
- (22) C.T. Vol. 3328 Fol. 378 RAMLATTAN SINGH & MARY RAMLATTAN SINGH 1,160.4m<sup>2</sup>
- (23) C.T. Vol. 3328 Fol. 378 RAMLATTAN SINGH & MARY RAMLATTAN SINGH 1,160.4m<sup>2</sup>
- (24) C.T. Vol. 3328 Fol. 378 RAMLATTAN SINGH & MARY RAMLATTAN SINGH 1,160.4m<sup>2</sup>
- (25) C.T. Vol. 3328 Fol. 378 RAMLATTAN SINGH & MARY RAMLATTAN SINGH 1,160.4m<sup>2</sup>
- (26) C.T. Vol. 3328 Fol. 378 RAMLATTAN SINGH & MARY RAMLATTAN SINGH 1,160.4m<sup>2</sup>
- (27) C.T. Vol. 3328 Fol. 378 RAMLATTAN SINGH & MARY RAMLATTAN SINGH 1,160.4m<sup>2</sup>
- (28) C.T. Vol. 3328 Fol. 378 RAMLATTAN SINGH & MARY RAMLATTAN SINGH 1,160.4m<sup>2</sup>
- (29) C.T. Vol. 3328 Fol. 378 RAMLATTAN SINGH & MARY RAMLATTAN SINGH 1,160.4m<sup>2</sup>
- (30) C.T. Vol. 3328 Fol. 378 RAMLATTAN SINGH & MARY RAMLATTAN SINGH 1,160.4m<sup>2</sup>
- (31) C.T. Vol. 3328 Fol. 378 RAMLATTAN SINGH & MARY RAMLATTAN SINGH 1,160.4m<sup>2</sup>
- (32) C.T. Vol. 3328 Fol. 378 RAMLATTAN SINGH & MARY RAMLATTAN SINGH 1,160.4m<sup>2</sup>
- (33) C.T. Vol. 3328 Fol. 378 RAMLATTAN SINGH & MARY RAMLATTAN SINGH 1,160.4m<sup>2</sup>
- (34) C.T. Vol. 3328 Fol. 378 RAMLATTAN SINGH & MARY RAMLATTAN SINGH 1,160.4m<sup>2</sup>
- (35) C.T. Vol. 3328 Fol. 378 RAMLATTAN SINGH & MARY RAMLATTAN SINGH 1,160.4m<sup>2</sup>
- (36) C.T. Vol. 3328 Fol. 378 RAMLATTAN SINGH & MARY RAMLATTAN SINGH 1,160.4m<sup>2</sup>
- (37) C.T. Vol. 3328 Fol. 378 RAMLATTAN SINGH & MARY RAMLATTAN SINGH 1,160.4m<sup>2</sup>
- (38) C.T. Vol. 3328 Fol. 378 RAMLATTAN SINGH & MARY RAMLATTAN SINGH 1,160.4m<sup>2</sup>
- (39) C.T. Vol. 3328 Fol. 378 RAMLATTAN SINGH & MARY RAMLATTAN SINGH 1,160.4m<sup>2</sup>
- (40) C.T. Vol. 3328 Fol. 378 RAMLATTAN SINGH & MARY RAMLATTAN SINGH 1,160.4m<sup>2</sup>
- (41) C.T. Vol. 3328 Fol. 378 RAMLATTAN SINGH & MARY RAMLATTAN SINGH 1,160.4m<sup>2</sup>

SCALE 1/5000

Distances are in metres

Note To obtain compass bearings add 13 minutes

This is a true copy of a Diagram of thirty point nine eight two seven hectares being the remainder granted to CHINNIBAS JAGROO showing a portion

coloured pink and containing TWENTY POINT NINE THREE SEVEN TWO HECTARES being the remainder after TWO resumptions and FIFTEEN previous transfers of other portions of land.

In accordance with Regulation 25 (1) of the Land Surveyors' Regulations 1998,

I certify that this plan is correct

Checked by.....

Entered on.....

Approved.....  
 Director of Surveys  
 2004-9-14

Trinidad and Tobago Land Surveyor..... 2004