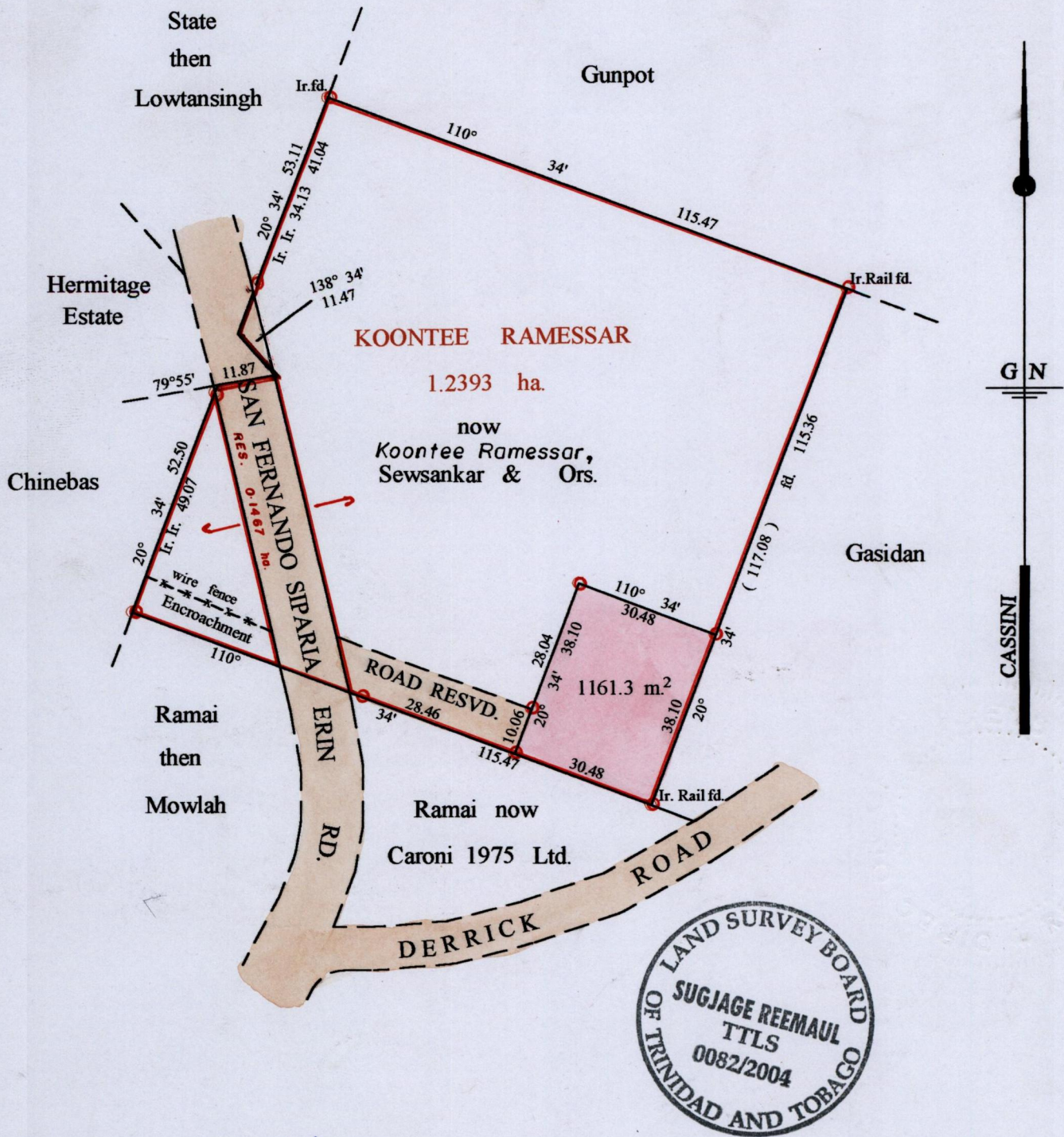


R.P.O. Vol. 24 fol. 395
C.T. Vol. 2461 fol. 283
Bk. 723 fol. 112

Ward of Naparima
County of Victoria
Cadastral Sheet (G. 8. N.) $\frac{63 C}{3/c}$



Approved *[Signature]*
Director of Surveys
2005-6-3

○ Denotes Iron Put Except
Otherwise Stated

SCALE : 1: 1250

Note: Bearings are cassini grid based on solar observations Distances are in metres

PLAN of a Parcel of land coloured pink in the Ward of Naparima
Containing one thousand one hundred and sixty one point three sq. metres
Surveyed by me, with due authority, in Feb. 2004

In accordance with Regulation 25 (1) of the Land Surveyors' Regulations 1998,
I certify that this plan is correct.

Checked by *[Signature]* *[Signature]*

Entered on Trinidad & Tobago Land Surveyor *28th February*, 2004