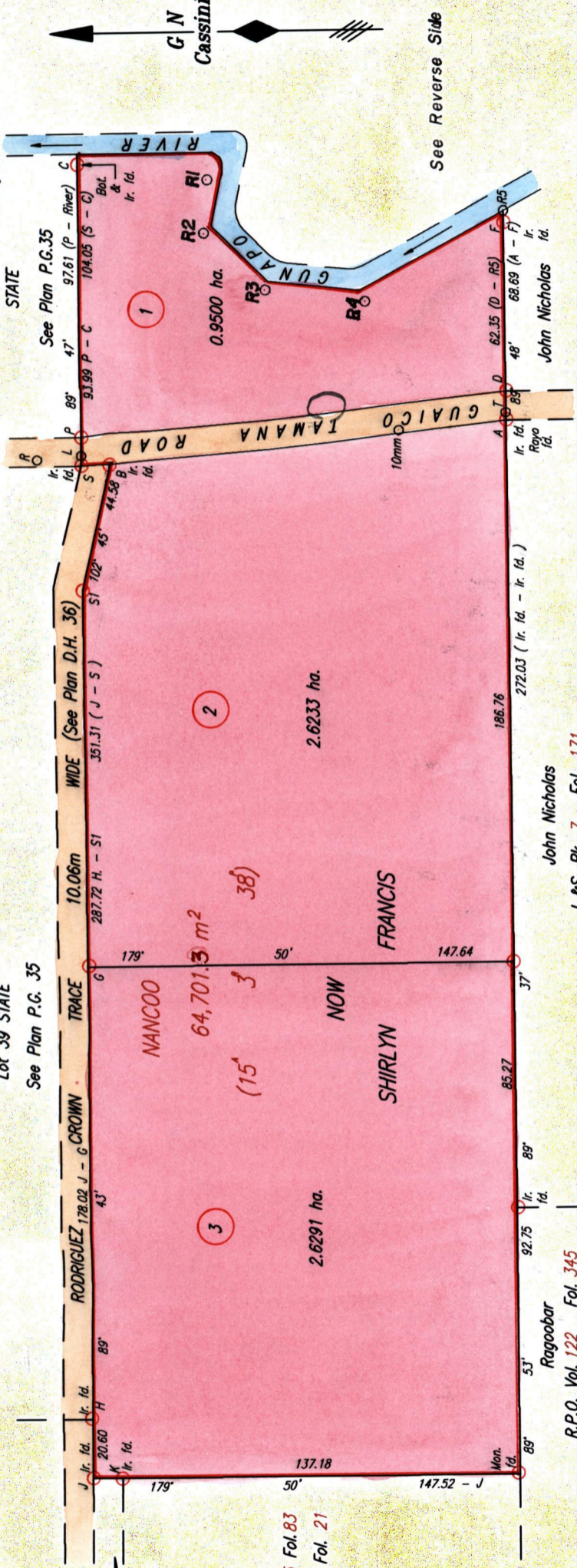


Cadastral Sheet E.6.O. 35E
2/d
Ward of Tamana
County of St. Andrew



Fol. 701
Fol. 343

R.P.O. Vol. 56
C.T. Vol. 676

Sookwarrich
R.P.O. Vol. 151
Fol. 89

Nancoo
R.P.O. Vol. 715 Fol. 83
L.&S. Bk. 665 Fol. 21

John Nicholas
L.&S. Bk. 7 - Fol. 171

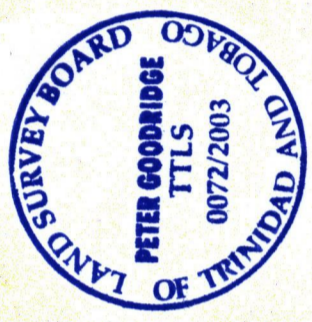
Ragoobar
R.P.O. Vol. 122 Fol. 345
R.P.O. Vol. 18 Fol. 102

SCALE 1:2000
Distances are in METRES

LEGEND

A - D	89°	48'	10.06
A - T	89°	48'	2.71
J - K	179°	50'	10.34
S - L	89°	47'	3.60
S - B	177°	13'	10.06
S - R	8°	29'	15.31
R - L	174°	57'	15.19
L - T	174°	57'	147.82

A - 10mm 356' 59' 37.20



Approved *[Signature]*
 Director of Surveys
 2005.5.11

○ Denotes Iron put except where otherwise stated
 Bearings are Cassini Grid based on Solar Observations

PLAN of 3 Parcels of land coloured pink in the Ward of Tamana
 Containing together six point two zero two four hectares
 Surveyed by me, with due authority, in November 2001

In accordance with Regulation 25 (1) of The Land Surveyors' Regulations 1998,

I certify that this plan is correct *[Signature]*
 Checked by *[Signature]* TTLS

Entered on
 Trinidad & Tobago Land Surveyor
 C:\LESS 2002\SHIRLYN FRANCIS\

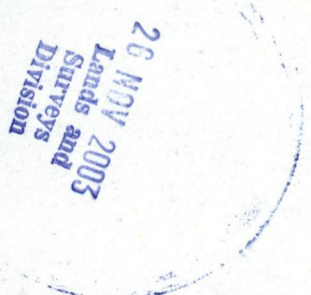
Direction of River Flow
 For River Notes See S.O. 1271/1899



C	45.87	3.62	GUNAPO RIVER
R1	18.11	4.02	
R2	29.17	93' 56"	
R2	29.17	2.82	
R3	34.80	44' 13"	
R3	34.80	3.02	
R4	56.83	7' 25"	
R4	56.83	4.63	
R5	3.06	327' 04"	
R5	3.06	89' 48"	
F			

Road notes ?

RIVER NOTES



	L		
3.60	147.82	6.46	GUAICO ROAD TAMANA
3.62	142.89	6.44	
3.98	138.00	6.08	
4.02	122.78	6.04	
4.22	102.66	5.84	
4.43	82.54	5.63	
4.22	62.42	5.84	
3.62	42.30	6.44	
3.22	22.18	6.84	
2.71	0.00	7.35	
	T		

ROAD NOTES

1195/253