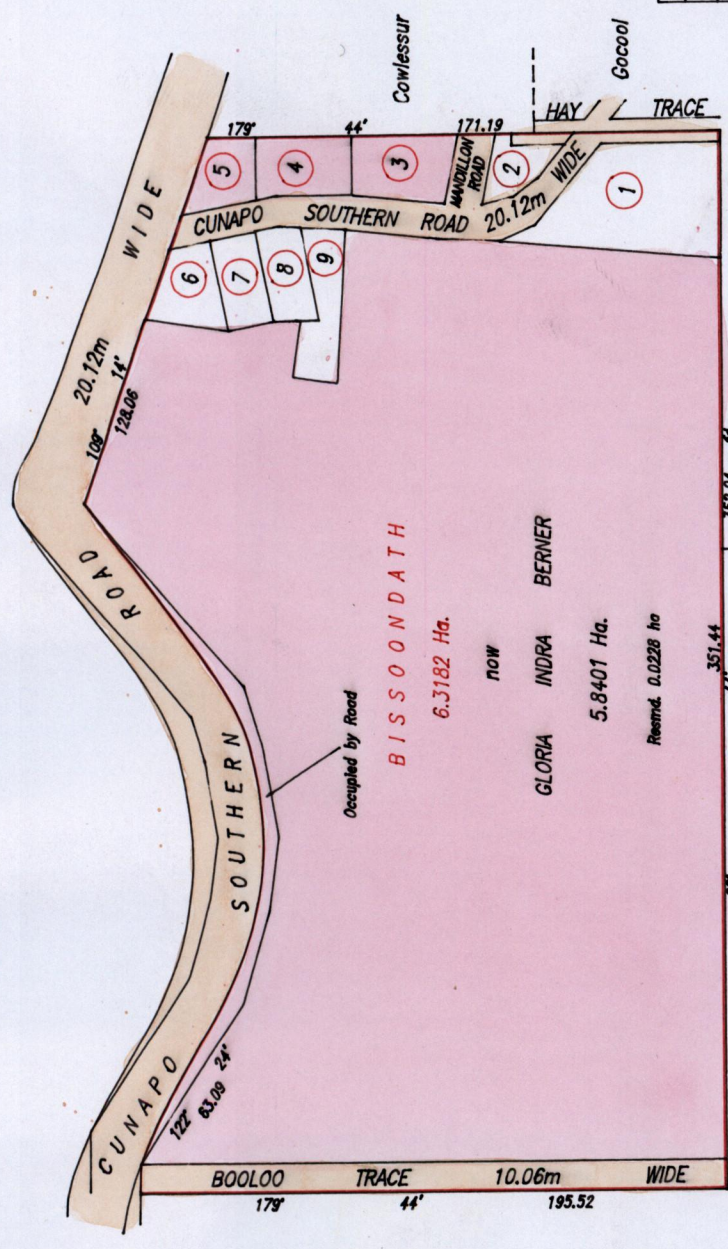


Cadastral Sheet E.2.1. 35C
1/b
Ward of Tureure
County of St. Andrew

Wide Plan R.H.101
Bk.1179 Fol.9
Bk.171 Fol.8

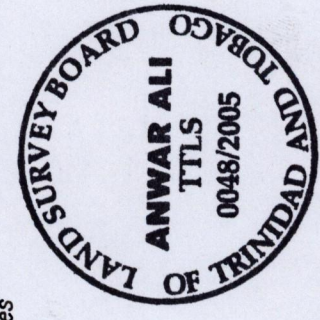


REMAINING PORTION

R.P.O. Vol. 67 Fol. 533
C.T. Vol. 1894 Fol. 57

STATE

LOTS	NAMES	C.T. Vol.	Fol.	AREAS
1	Yashwantee Khadan Joseph	3134	45	2,083.7 m ²
2	Sewak Baran	3121	317	355.8 m ²
6	Gatka Sharma & Iita Ramdial	4219	325	549.4 m ²
7	Winnie Portillo	2964	337	464.5 m ²
8	Simbhoo Ramoutar	2947	291	471.9 m ²
9	Halima Baksh and Sanardar Rampersad	4372	357	628.0 m ²



SCALE 1:2500
Distances are in metres

Approved
[Signature]
Director of Surveys
2005.5.5

Bearings are based on Solar Observations
This is a true copy of a diagram of six point three one eight two hectares originally, transferred to Bissoondath showing a portion coloured pink containing five point eight four zero one hectares being the remainder after six transfers and one resumption of another portion of the land.
In accordance with Regulation 25 (1) of the Land Surveyors' Regulations 1998,
I certify that this plan is correct.

Checked by *[Signature]*
Entered on Trinidad & Tobago Land Surveyor.
PAITH = AD4004 G/DIR/AINES/MARTIN BERNIER DING. 10th February 2005.