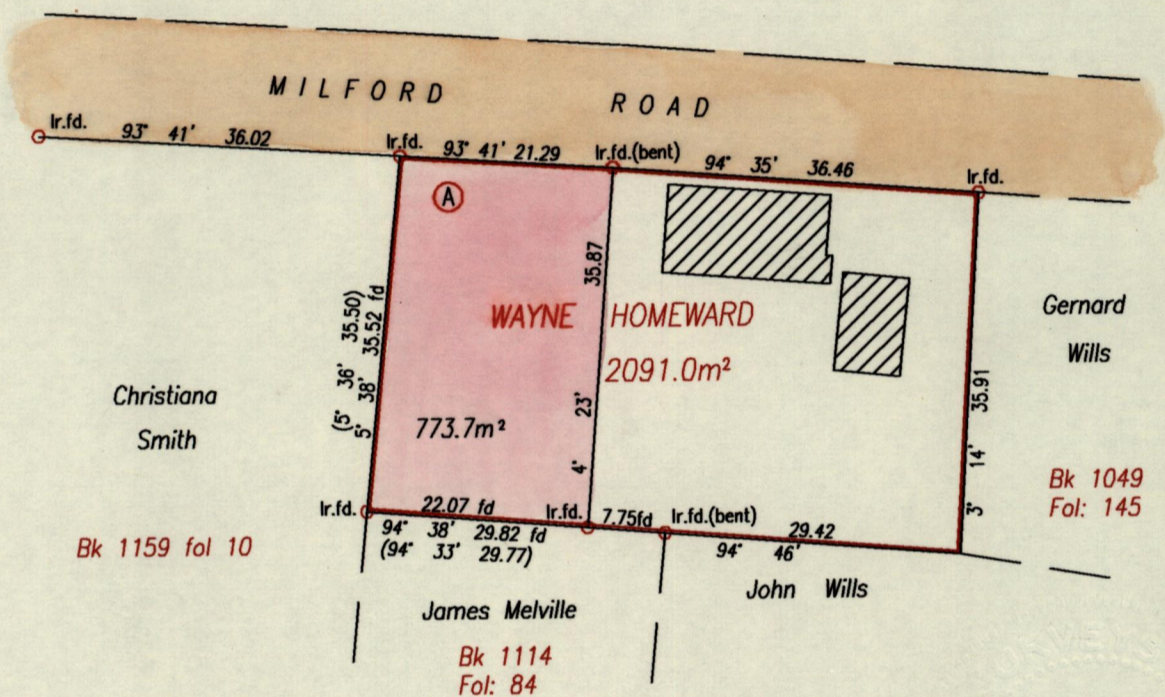
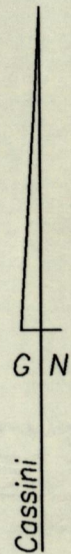


1195

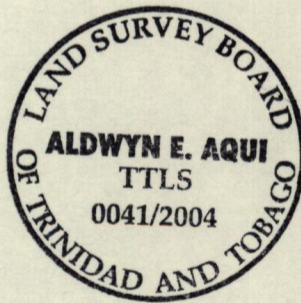
2008

R.P.O. Vol. Fol.  
C.T. Vol. 3278 Fol. 367

Cadastral Sheet 1.21B  
Ward of Tobago 1E/6/a/4  
Parish of St.Patrick



Approved  
  
 Director of Surveys  
 2005-4-1



SCALE ~ 1: 750  
 Distances are in metres

Note: Bearings obtained by solar observations.

Plan of a parcel of land coloured pink in the Ward of Tobago,  
 containing seven hundred and seventy three point seven square metres,  
 Surveyed by me, with due authority, on 11th February 2004  
 In accordance with Reg.25(1) of the Land Surveyors' Regulations 1998,  
 I certify that this plan is correct.

Checked by T.T.L.S.  
 Entered on ..... Trinidad & Tobago Land Surveyor 24.12.2004