

1195

201

R.P.O. Vol.438 Fol. 483

Cadastral Sheet C.13.L. 16B
3/d & 4/c

C.T. Vol. 1247 Fol. 423
C.T. Vol 5496 Fol 275

Ward of Matura

U.P.R.N. No.

County of St. Andrew

Vide Bk 206 / 56

General Plan of lots 3 - 13 in Vol. 1017 Fol. 399
General Plan of lots 14 - 27 in Vol. 1745 Fol. 253

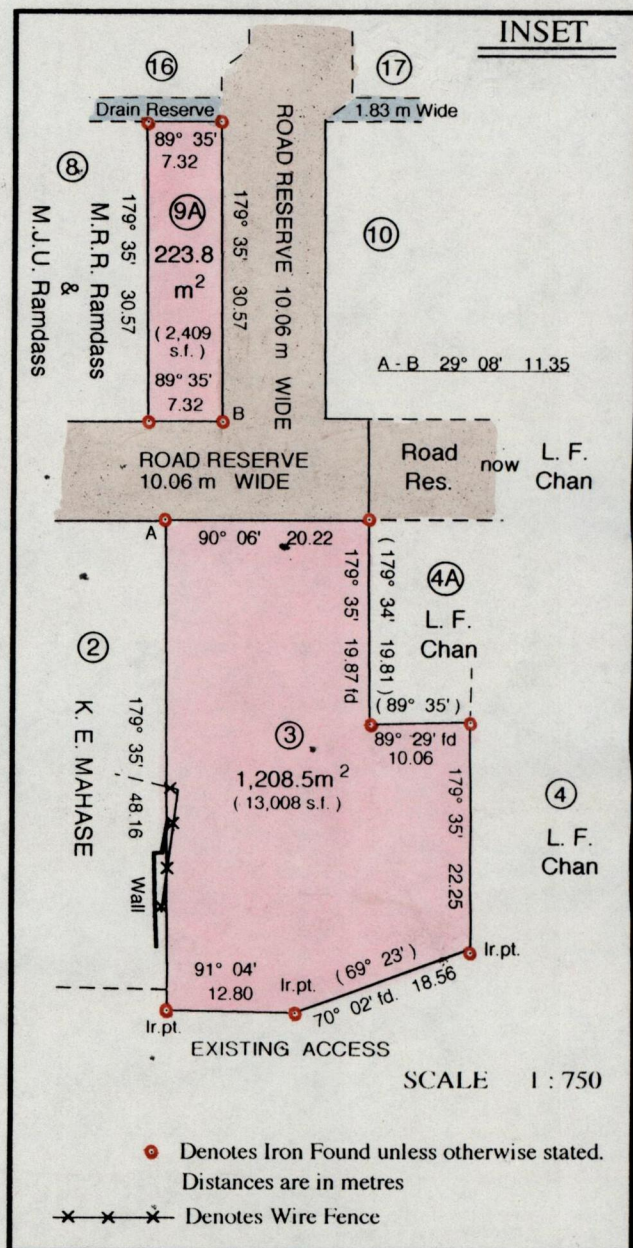
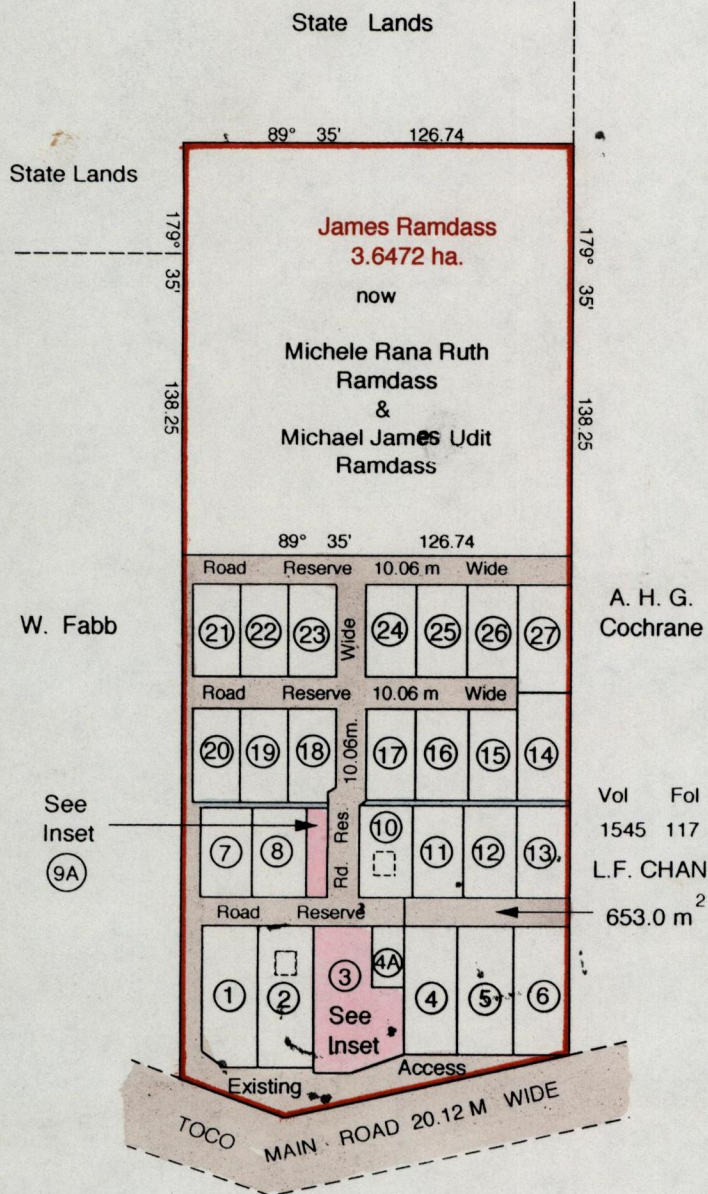
948 / 78 & 79

892 / 58

834 / 156

Plan E.J.29

Cassini
Grid North



Approved *[Signature]*
Director of Surveys

2005-3-21

SCALE 1 : 2500

Distances are in metres

Bearings are Cassini Grid based on Solar Obs.
To obtain Compass bearings add 25 minutes

PLAN of 2 Parcels of land coloured pink in the Ward of Matura
Containing together one thousand four hundred and thirty two point three square metres
Surveyed by me, with due authority, in August 2003

In accordance with Regulation 25 (1) of the Land Surveyors' Regulations 1998,
I certify that this plan is correct.

Checked by *[Signature]*
Entered on.....

[Signature]
Trinidad & Tobago Land Surveyor 26th October 2004

