

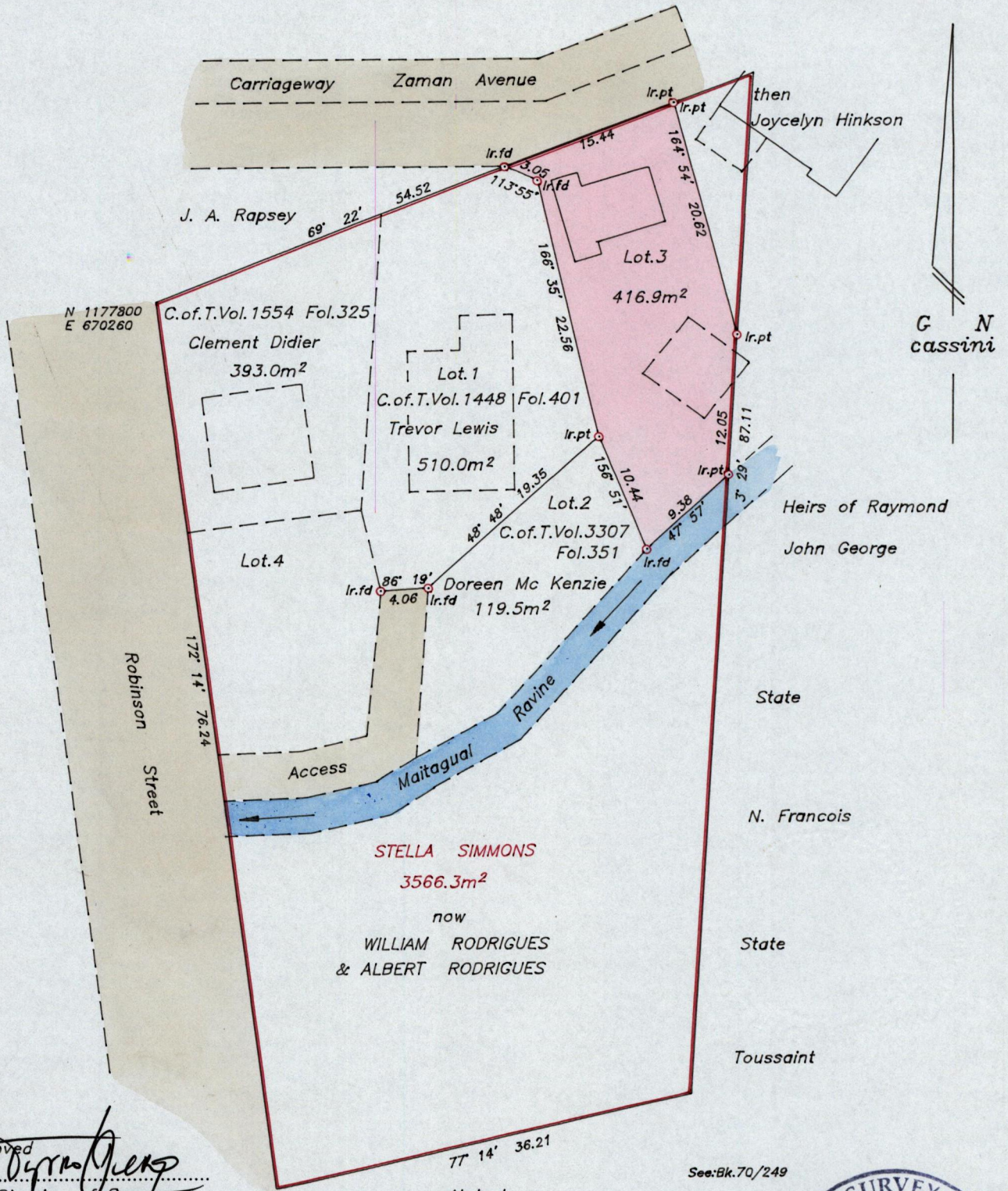
Ward of St. Anns

R.P.O. Vol. 405 Fol. 289

County of St. George

C.T. Vol. 1448 Fol. 401

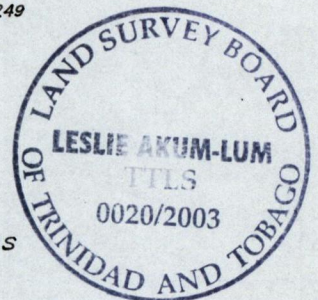
Cadastral Sheet B.17.K. $\frac{23C}{1/b}$



Approved
[Signature]
 Director of Surveys
 2024.8.20

See: Bk. 70/249

Abdool



SCALE 1/500

Coordinates scaled from 1/10000 sheet.
 Note: To obtain compass bearings add 1 minute.

Distances are in metres

PLAN of a Parcel of land coloured Pink in the Ward of St. Anns
 Containing four hundred and sixteen point nine square metres
 Surveyed by me with due authority in July 2003

In accordance with Regulation 25 (1) of the Land Surveyors' Regulations 1998,
 I certify that this plan is correct.

Checked by *[Signature]*
 Entered..... Trinidad & Tobago Land Surveyor *[Signature]* 18th July 2003.....