

1195

1195/1197

1837

REMAINING PORTION

City of San Fernando

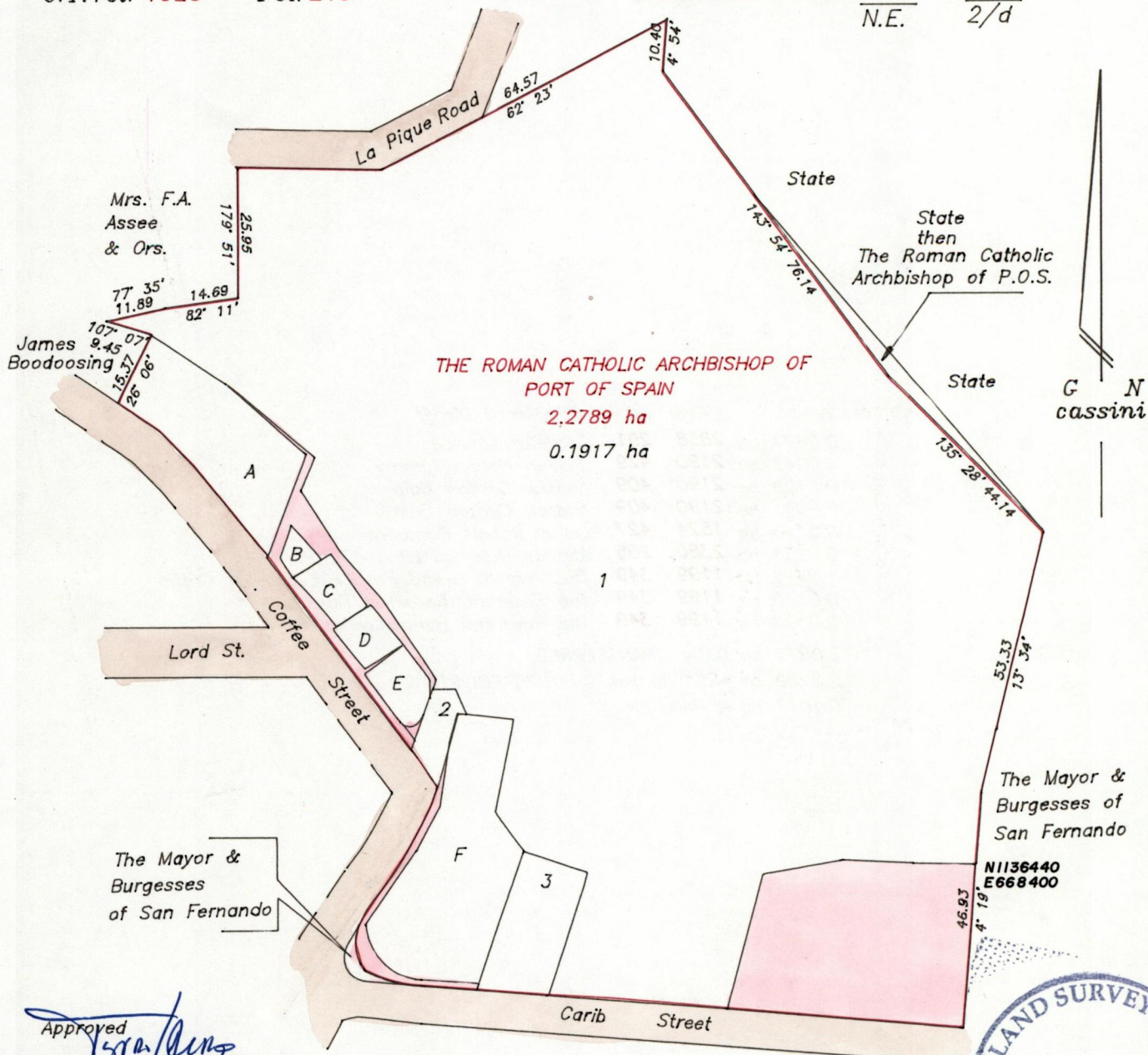
R.P.O. Vol. 725 Fol. 455

(La Pique)
Naparima Girls
High School

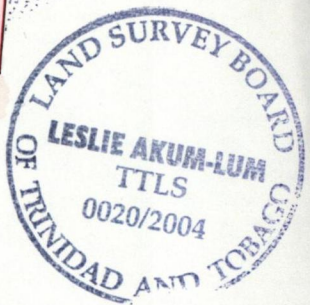
County of Victoria

C.T. Vol. 1029 Fol. 215

Cadastral Sheet G.3.1. 53E
N.E. 2/d



Approved
[Signature]
 Director of Surveys
 2005-3-14



See Plan EB. 107
 See Bk. 780 Fol. 57

SCALE 1/1250

Distances are in metres

Co-ordinates scaled from 1/10,000 ward sheet
 Bearings are Cassini Grid
 Note: To obtain compass bearings subtract 4 minutes.

This is a true copy of a diagram of two point two seven eight nine hectares originally transferred to The Roman Catholic Archbishop of Port of Spain, shewing a portion coloured pink and containing zero point one nine one seven hectares being the remainder after 9 previous transfers of other portions of the land. In accordance with Regulation 25 (1) of the Land Surveyors' Regulations 1998, I certify that this plan is correct.

Checked by *M.M. 6/1/05*

[Signature]

Entered..... Trinidad & Tobago Land Surveyor *3rd September 2004*

Parcel	Area	C.T.Vol.	Folio.	Registered Owner
A	0.0674 ha	2858	291	Shamfar Limited
B	0.0043 ha	2190	429	Joseph Hebbo Tommy
C	0.0109 ha	2190	409	Andrew Carlton Bain
D	0.0091 ha	2190	409	Andrew Carlton Bain
E	0.0126 ha	1524	427	Lionel Robert Rambaran
F	0.0934 ha	2380	205	Abacus Holdings Limited
1	1.8413 ha	1199	349	The Very Reverend Patrick Evangelist Griffin
2	0.0110 ha	1199	349	The Reverend Cornelius Dunstan
3	0.0372 ha	1199	349	The Reverend Henry Livinus Kelly
2.0872 ha TOTAL TRANSFERRED				
2.2789 ha AREA as per C.T.1029 FOL.215				
0.1917 ha REMAINDER				



1195/1087