

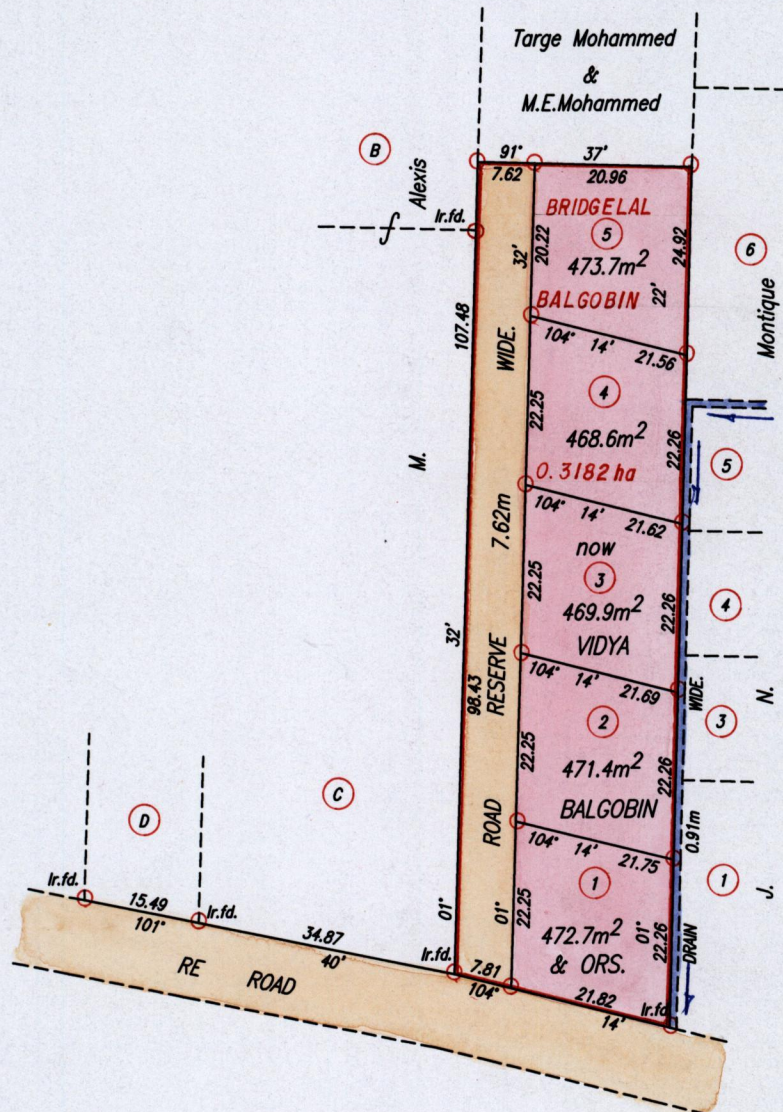
1195

1833

1195/1833

Cadastral Sheet F.25.G. ^{8H} ^{72E} _{4/a}
Ward of Erin
County of St.Patrick.

R.P.O. Vol. 20 Fol. 395
C.T. Vol. 2420 Fol. 409
C.T. Vol. 2420 Fol. 409



Cassini
G W

Approved *[Signature]*
Director of Surveys
2005-3-14

SCALE 1:1000
Distances are in Metres

○ Denotes Iron put except otherwise stated.

Bearings are based on Solar Observations.(Cassini Grid.)

PLAN of 5 Parcels of land coloured pink in the Ward of Erin

Containing together zero point two three five six hectare.

Surveyed by me, with due authority, in March, 2004

In accordance with Regulation 25(1) of the Land Surveyors' Regulations 1998,
I certify that this plan is correct.

Checked by *[Signature]* 2005-3-14

Entered Trinidad & Tobago Land Surveyor . *[Signature]* 2004

