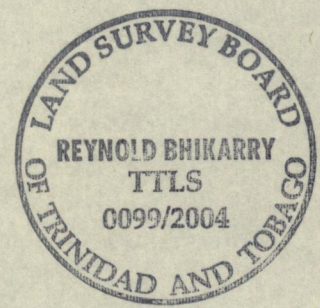
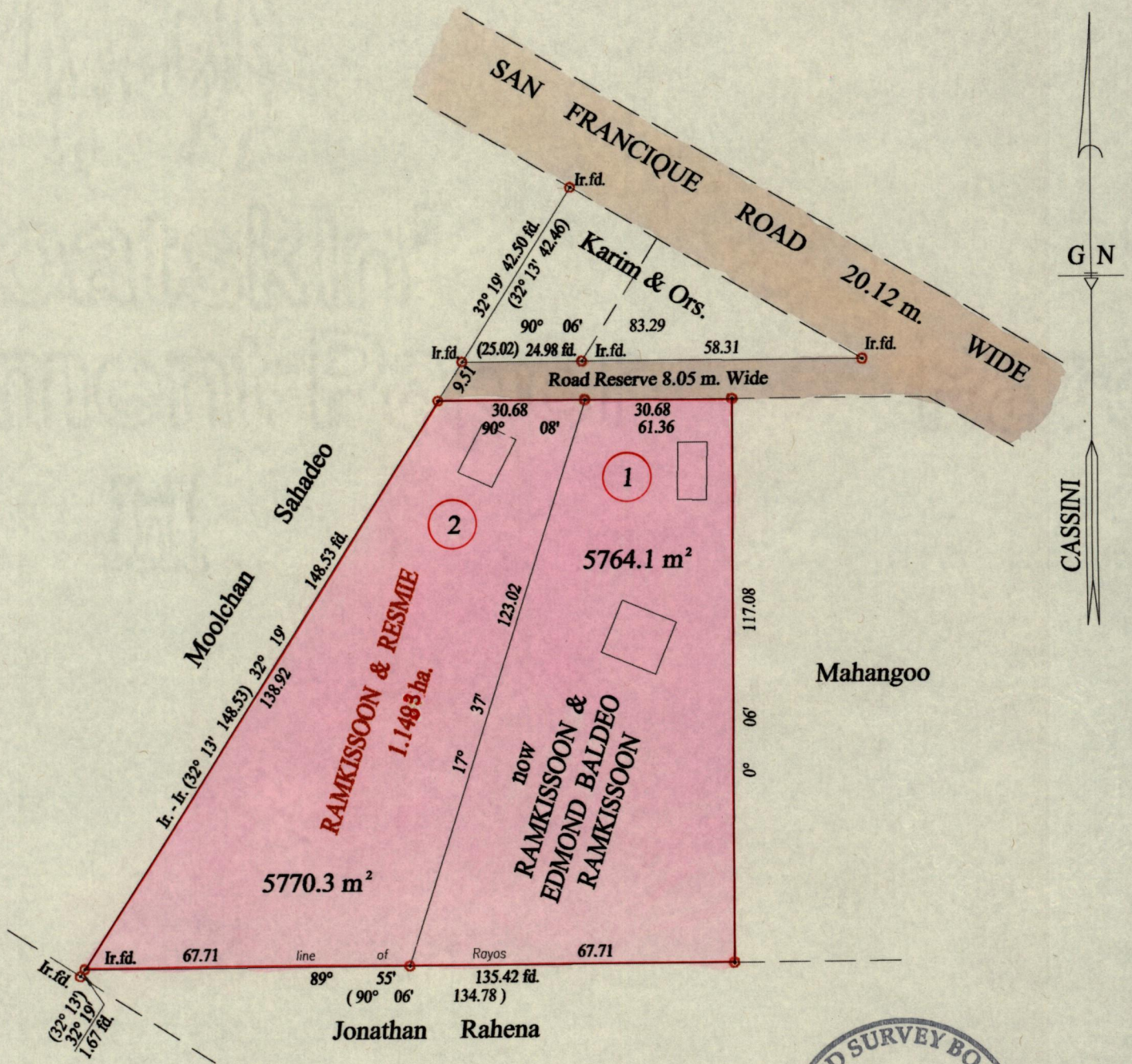


1195

174

R.P.O. Vol. 149 Fol. 243
C.T. Vol. 1303 Fol. 25

Ward of Siparia
County of St. Patrick
Cadastral Sheet (G.12.H.) 63.E.
1/d



Vide Bk.114 fol.67
Vide Bk.1179 fol.168
Vide Bk.398 fol.152

Approved *[Signature]*
Director of Surveys
2005.3.14

o Denotes Iron put except stated otherwise.

SCALE : 1:1250

Note: Bearings are cassini grid based on solar observations

Distances are in metres

PLAN of 2 Parcels of land coloured pink in the Ward of Siparia

Containing together eleven thousand five hundred and thirty four point four square metres
Surveyed by me, with due authority, in March 2004

In accordance with Regulation 25 (1) of the Land Surveyors' Regulations 1998,
I certify that this plan is correct.

Checked by *[Signature]* Reynold Bhikarry

Entered on Trinidad & Tobago Land Surveyor 2nd July 2004