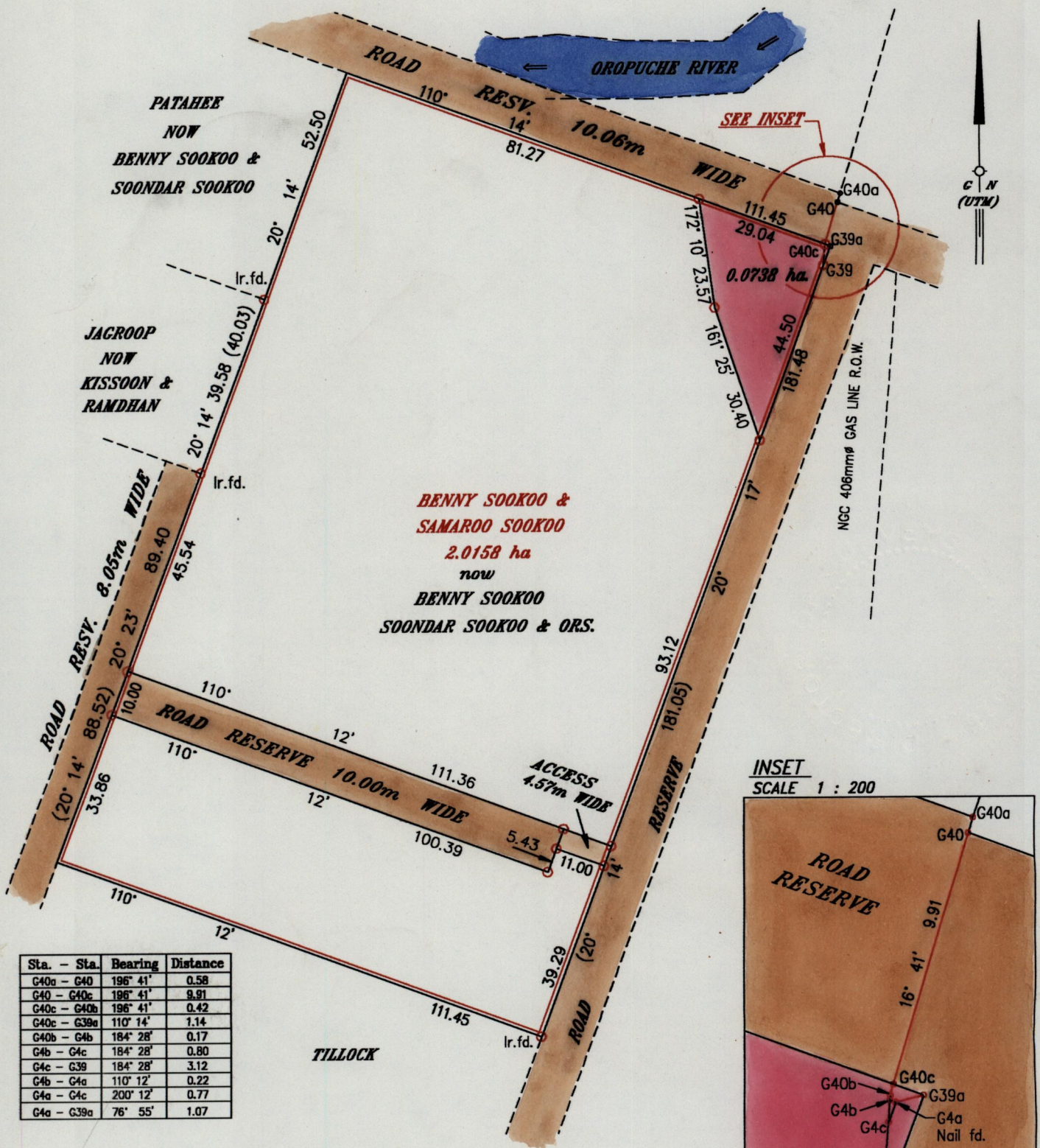


1195

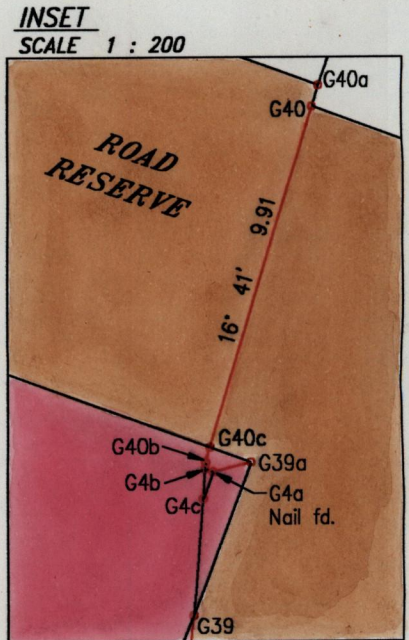
173

RPO Vol. 109 Fol. 181
CT. Vol. 2531 Fol. 125

Ward of Naparima
County of Victoria
Cadastral Sheet (G.13 G), $\frac{63 F}{1/d \& 2/c}$



Sta. - Sta.	Bearing	Distance
C40a - G40	196° 41'	0.58
G40 - G40c	196° 41'	9.91
G40c - G40b	196° 41'	0.42
G40c - G39a	110° 14'	1.14
G40b - G4b	184° 28'	0.17
G4b - G4c	184° 28'	0.80
G4c - G39	184° 28'	3.12
G4b - G4a	110° 12'	0.22
G4a - G4c	200° 12'	0.77
G4a - G39a	76° 55'	1.07



Approved *[Signature]*
Director of Surveys
2002-3-14

○ Denotes Iron put except stated otherwise.
Bearings are UTM Grid based on Solar Observations.

SCALE 1: 1200
Distances are in metres

Plan of a Parcel of land coloured pink in the Ward of Naparima
Containing zero point zero seven three eight hectare.
Surveyed by me with due authority, in May, 2001 at the request of
The National Gas Company of Trinidad & Tobago Limited.
In accordance with Regulation 25 (1) of the Land Surveyors Regulations 1998,
I certify that this plan is correct.



Checked by *[Signature]* 7/3/02
Entered on

[Signature]
Trinidad & Tobago, Land Surveyor. 06/03/2002