

1195

147

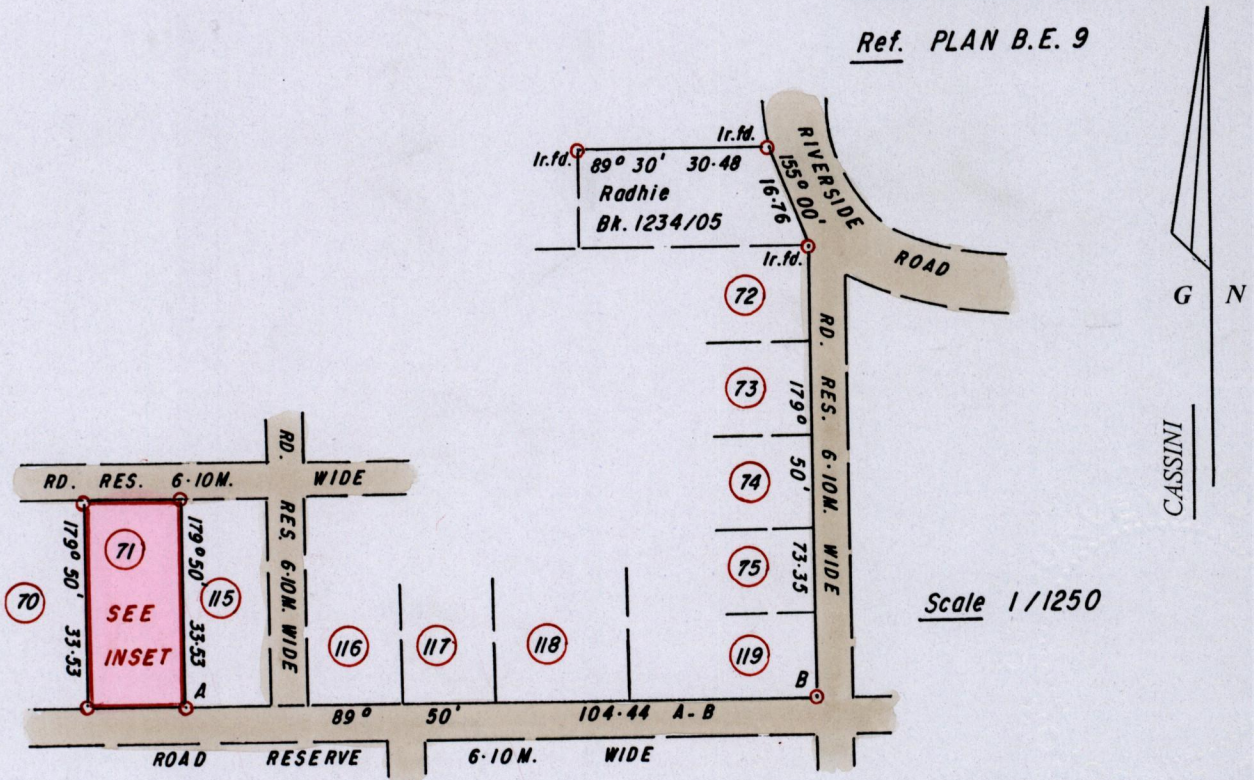
R.P.O. Vol. 471
C.T. Vol.

Fol. 619
Fol.

Ward of Charuma
County of Nariva
Cadastral Sheet H.I.G., 55D
1/d.

'FONROSE VILLAGE'

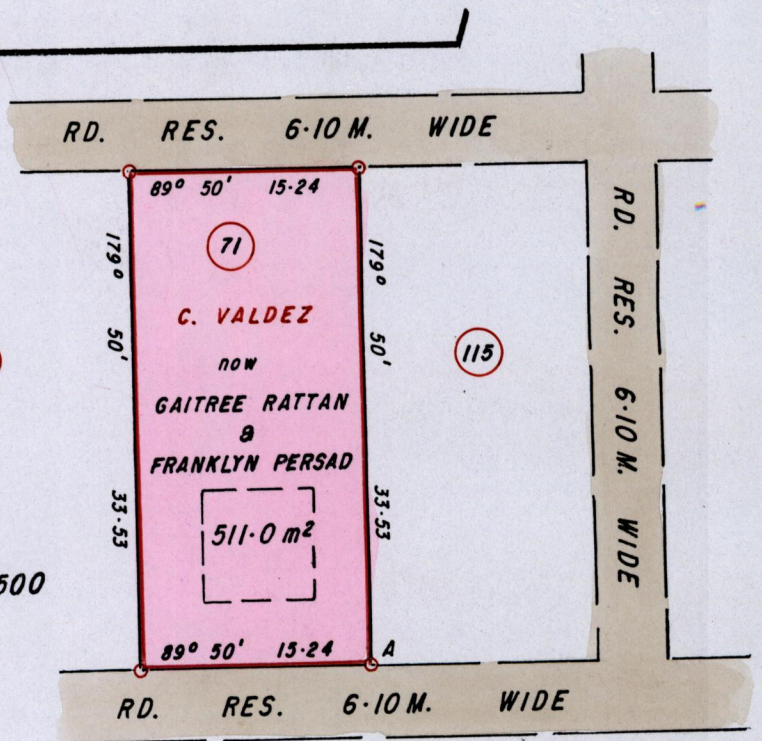
Ref. PLAN B.E. 9



Scale 1/1250



INSET
Scale 1/500



Approved

Director of Surveys

2007-1-24

○ Denotes Iron put unless otherwise stated
Bearings are Cassini Grid based on Solar Obs.
SCALE 1/500
Distances are in METRES

Note: To Obtain compass bearings add/subtract minutes

PLAN of a Parcel of land coloured PINK in the Ward of Charuma
Containing five hundred and eleven point zero square metres
Surveyed by me, with due authority, in July 2004
In accordance with Regulation 25 (1) of the Land Surveyors' Regulations 1998,
I certify that this plan is correct.

Checked by

Trinidad and Tobago Land Surveyor

Entered

2004