

R.P.O. Vol. 192

Fol. 161

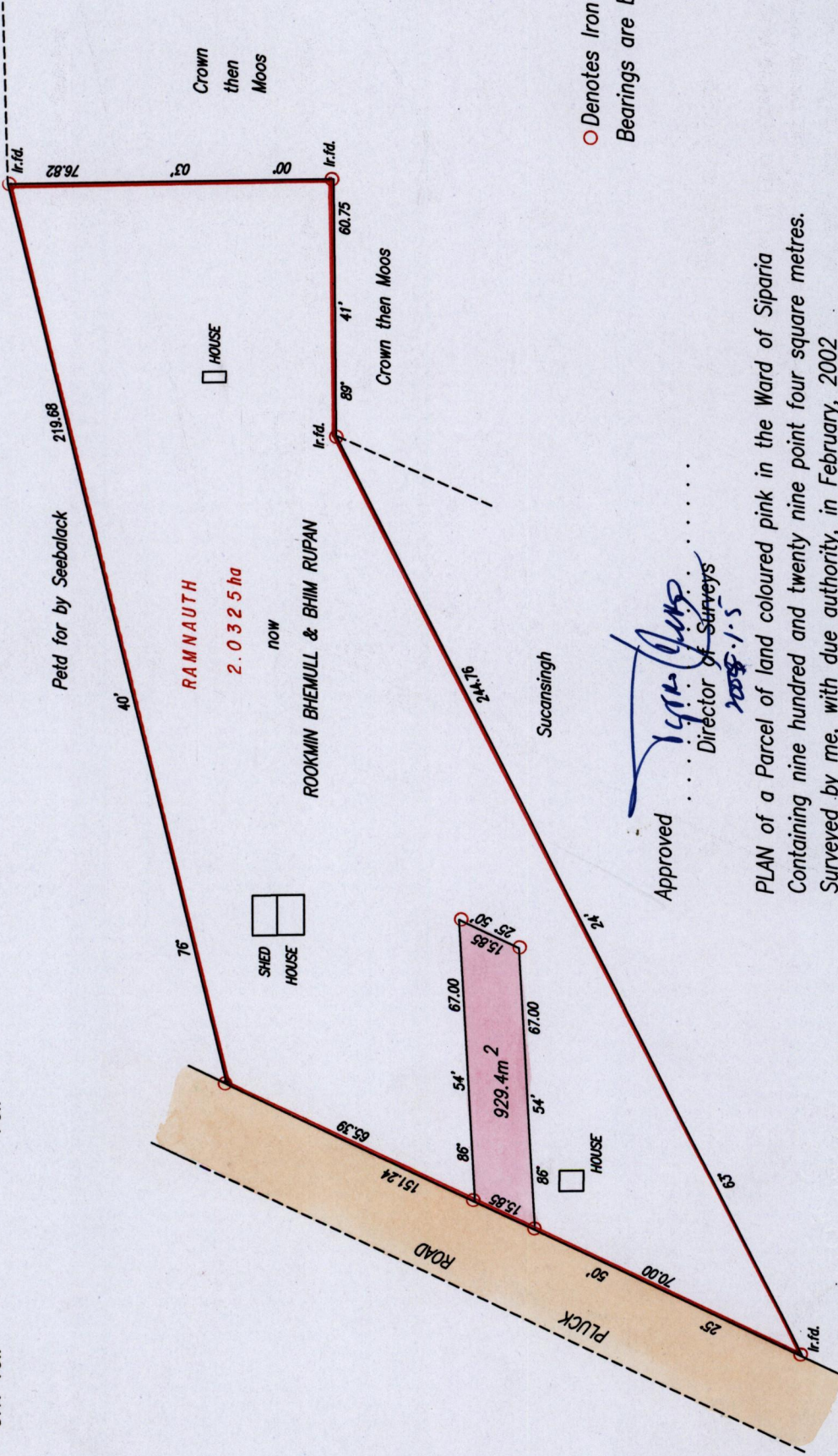
C.T. Vol.

Fol.

Ward of Siparia

County of St. Patrick.

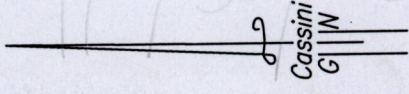
Cadastral Sheet G.12..C. & D. 63E  
1/b



1195

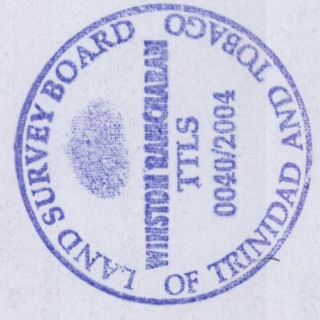
1195/1133

133



○ Denotes Iron put except otherwise stated.  
Bearings are based on Solar Observations. (Cassini Grid.)

SCALE 1:1500  
Distances are in Metres



Approved *[Signature]*  
Director of Surveys  
2008.1.5

PLAN of a Parcel of land coloured pink in the Ward of Siparia  
Containing nine hundred and twenty nine point four square metres.  
Surveyed by me, with due authority, in February, 2002  
In accordance with Regulation 25(1) of the Land Surveyors' Regulations 1998,  
I certify that this plan is correct.

Checked by *[Signature]* Winstan Ramcharan

Entered . . . . . Trinidad & Tobago Land Surveyor 21st October . . . . . 2004