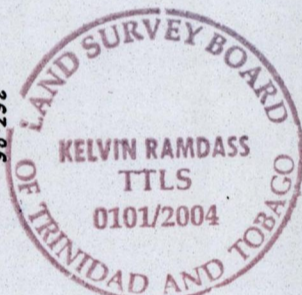
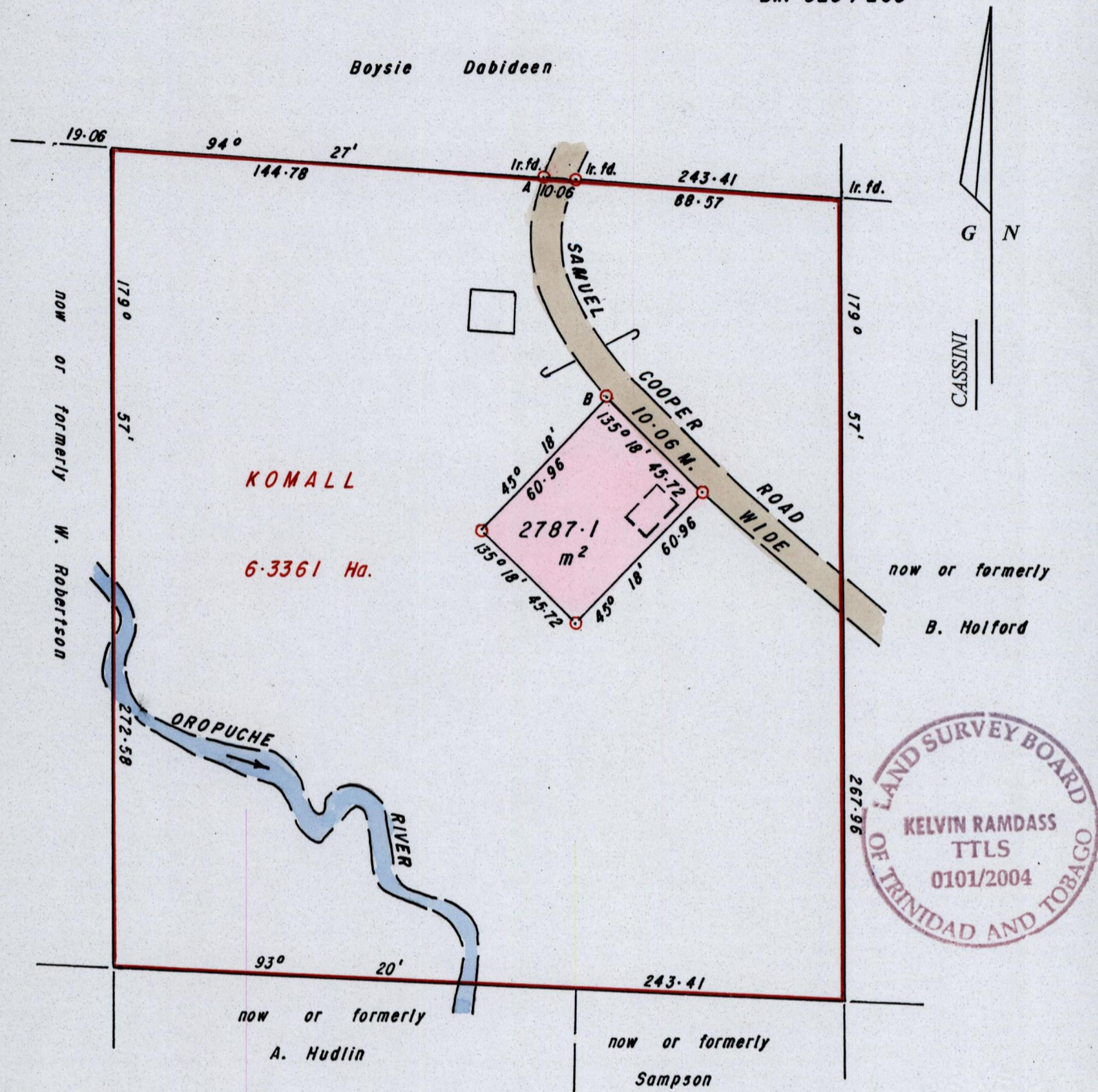
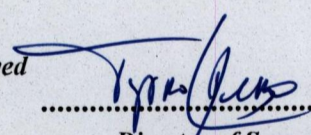


R.P.O. Vol. 30  
C.T. Vol. 3483

Fol. 201  
Fol. 257

Ward of Savana Grande  
County of Victoria  
Cadastral Sheet G.10. A., 54E  
Ref. Bk. 1241/160 4/c  
Bk. 323/253

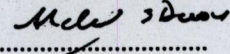


Approved   
 Director of Surveys  
 2004.12.14

○ Denotes Iron put unless otherwise stated  
 Bearings are Cassini Grid based on Solar Obs.  
 SCALE 1/2000  
 Distances are in METRES

Note: To Obtain compass bearings add/subtract minutes

PLAN of a Parcel of land coloured PINK in the Ward of Savana Grande  
 Containing two thousand seven hundred and eighty seven point one square metres  
 Surveyed by me, with due authority, in September 2002 to be vested to Shirley Dabideen  
 In accordance with Regulation 25 (1) of the Land Surveyors' Regulations 1998,  
 I certify that this plan is correct.

Checked by  .....  
 Entered ..... Trinidad and Tobago Land Surveyor ..... 25/14 ..... 2004.