

B N<sup>o</sup> 4332

R.P.O. Vol. 55

Fol. 319

C.T. Vol. 595

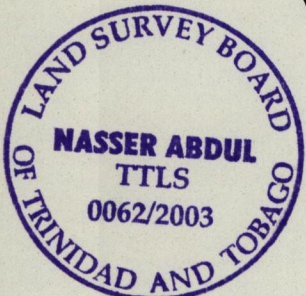
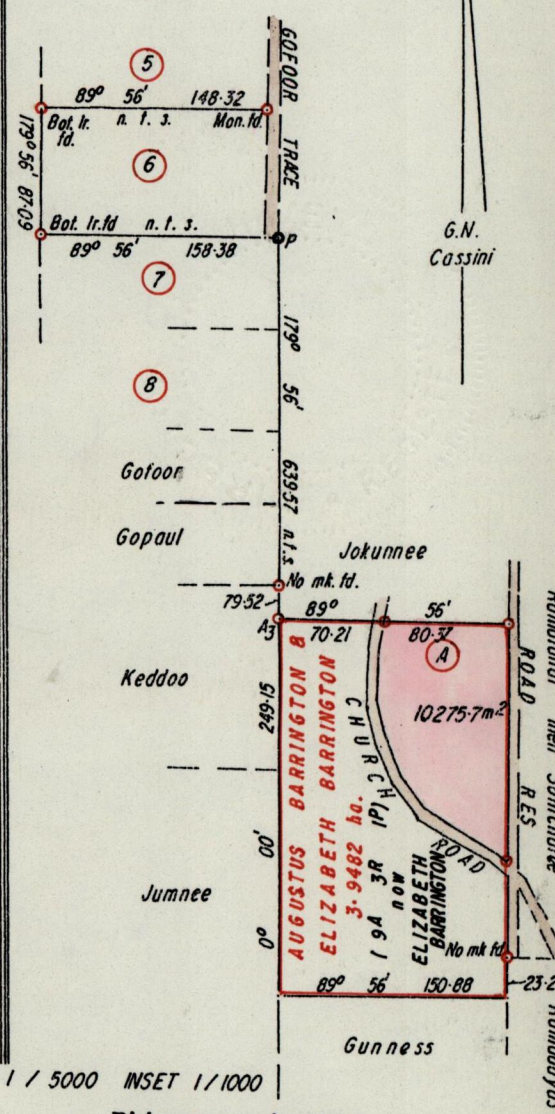
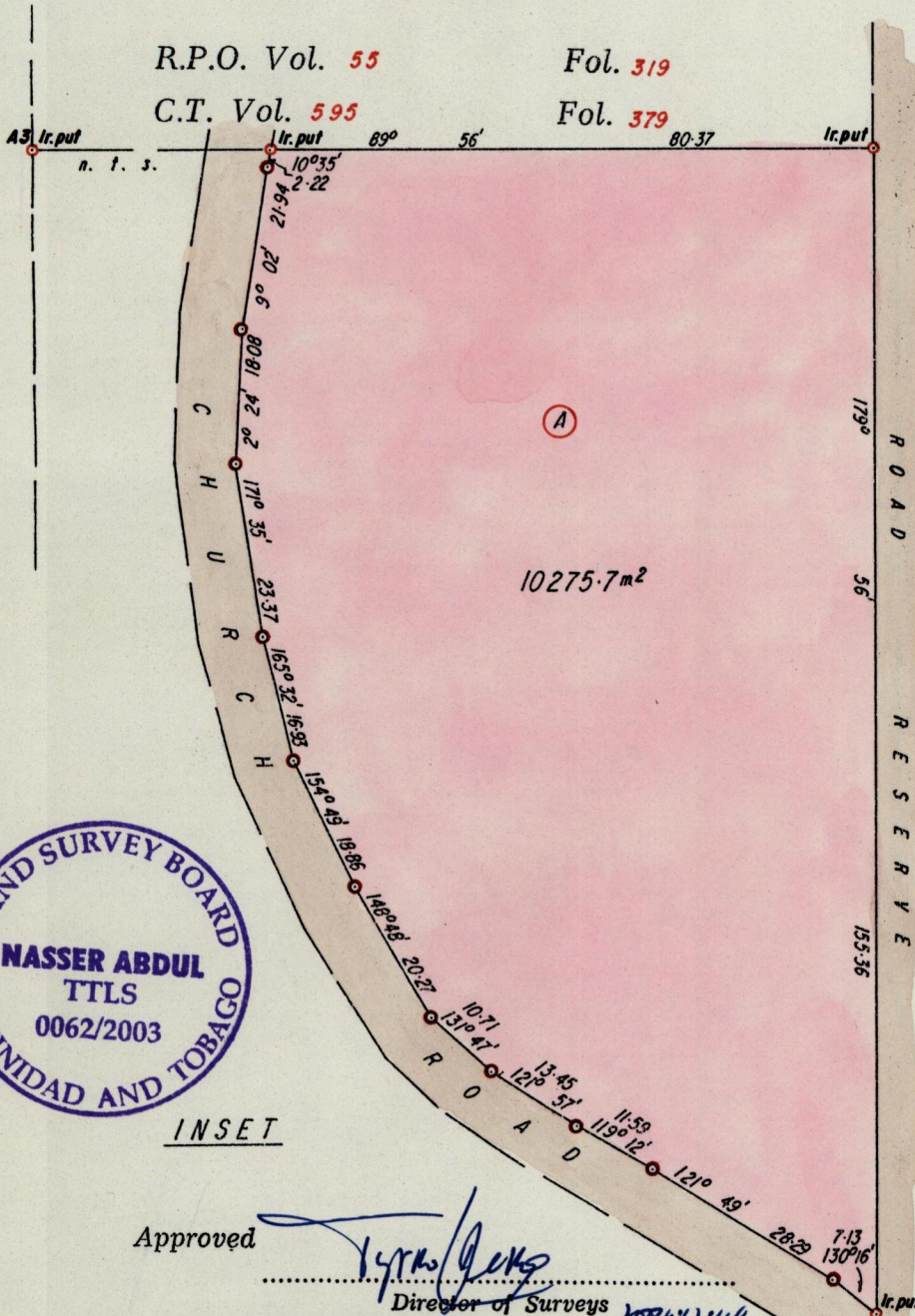
Fol. 379

Ward of Ortoire

County of Victoria

Cadastral Sheet 54F / 4 / b, H. I. I.

PLAN K.E. 24



INSET

Approved *[Signature]*  
 Director of Surveys

○ Denotes No mk. put unless otherwise stated  
 Bearings are Cassini based on Solar Obs.  
 Note: To obtain compass bearings add/subtract

SCALE 1 / 5000 INSET 1 / 1000  
 minutes Distances are in metres

PLAN of a Parcel of land coloured pink in the Ward of Ortoire  
 Containing ten thousand two hundred and seventy five point seven square metres  
 Surveyed by me, with due authority, in September 1998

In accordance with Regulation 25 (1) of the Land Surveyors' Regulations 1998,  
 I certify that this plan is correct.

Checked by *[Signature]*

Entered ..... Land Surveyor, T.T.L.S. *[Signature]* 15<sup>th</sup> December 1998.

BK. 326: 331