

1195

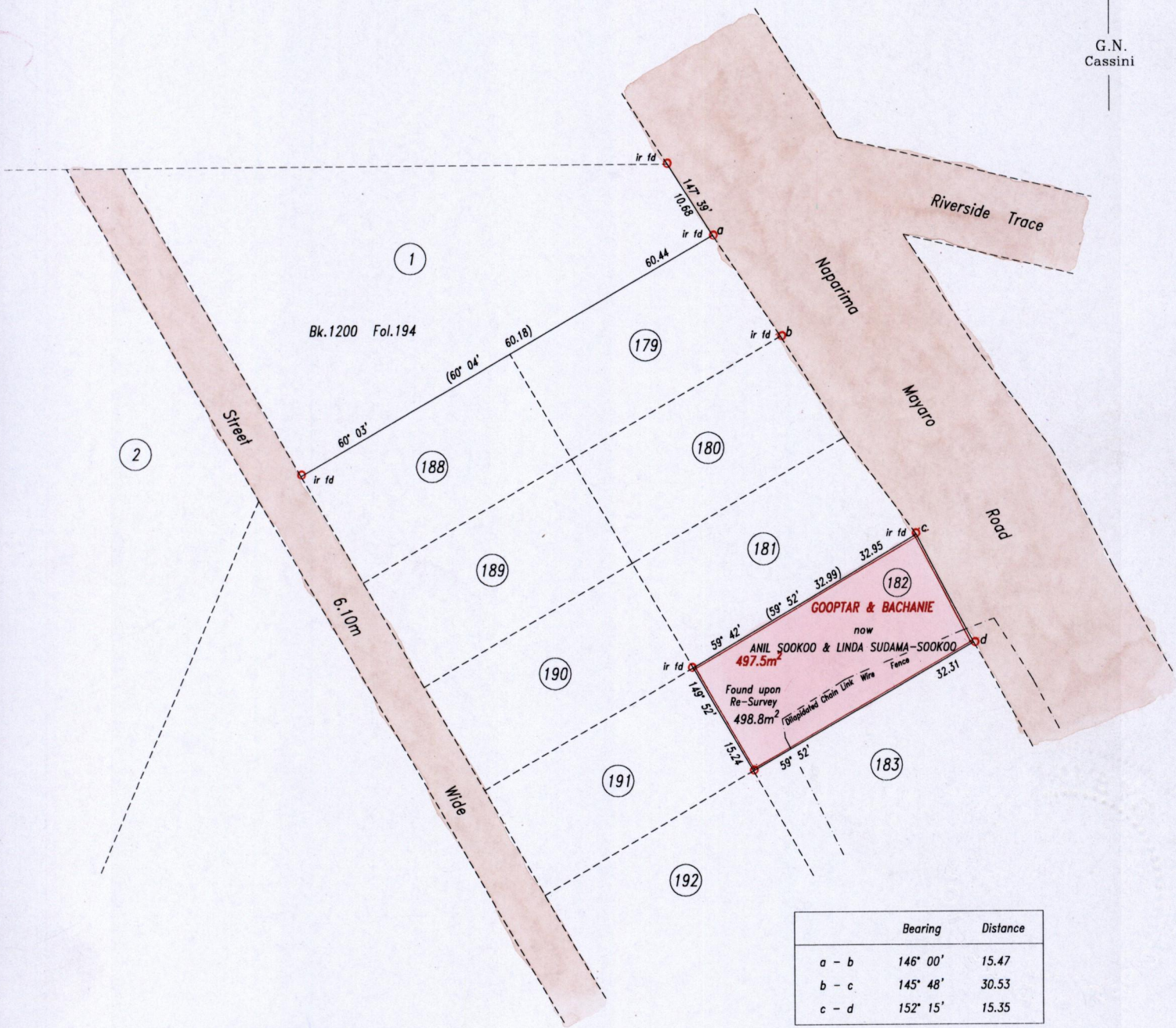
1195/08

1(1)

C.T. Vol. 546 Fol. 13
C.T. Vol. Fol.
U.P.R.N. No.:

Ward of Charuma
County of Nariva
Cadastral Sheet H.1.G. $\frac{55D}{1/d}$

G.N. Cassini



	Bearing	Distance
a - b	146° 00'	15.47
b - c	145° 48'	30.53
c - d	152° 15'	15.35

Approved

 Director of Surveys
 2004/11/29

Reference: Plan B.E. 9

SCALE 1: 750

Distances are in metres

○ Denotes iron put except otherwise stated

Bearings are Cassini Grid based on Solar Observations

PLAN of a parcel of land coloured pink in the Ward of Charuma
Containing four hundred and ninety eight point eight square metres
Surveyed by me, with due authority, in February 2004

In accordance with Regulation 25(1) of the Land Surveyors' Regulations 1998, I certify that this plan is correct.

Checked by
Entered

Trinidad & Tobago Land Surveyor 23/6/2004

