

1195

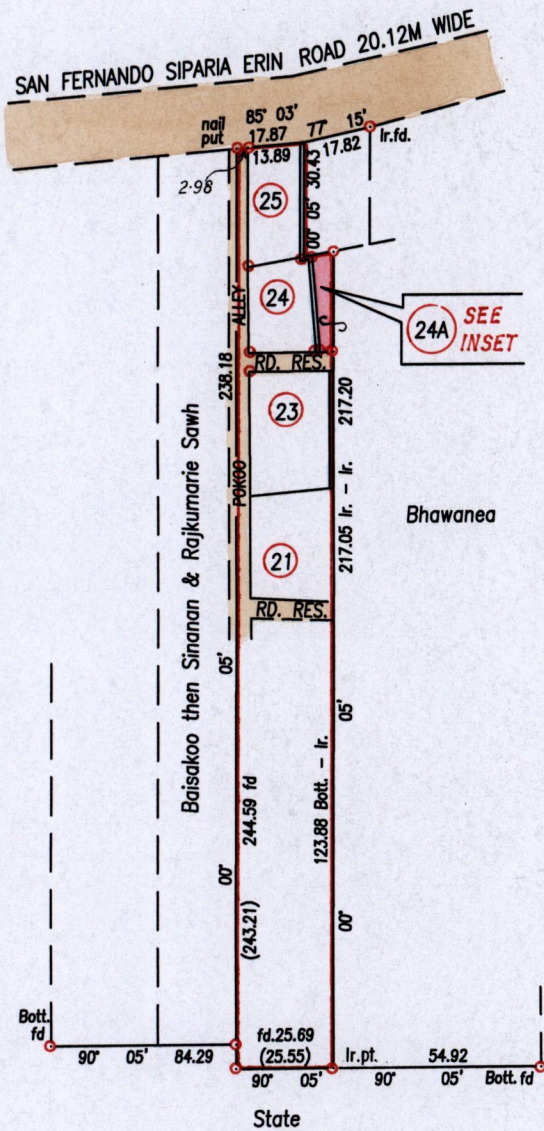
107

R.P.O. Vol. 147 Fol. 57

C.T. Vol. 1590 Fol. 415

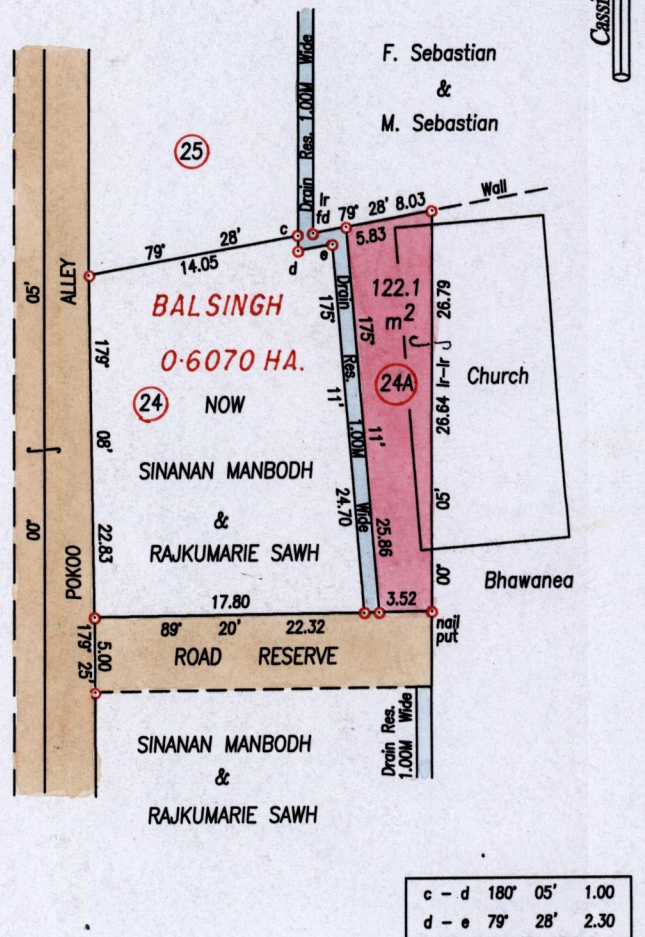
VIDE BK. 960 FOL. 103

Ward of Siparia  
County of St. Patrick  
Cadastral Sheet G.17.B. 73A  
Vide: Bk. 1279 Fol. 236 2/b  
Plan # 760



Note: Lot 24A is to be amalgamated with Bhawanea's Parcel

INSET



SCALE 1/500

Distances are in metres

○ Denotes Iron put unless otherwise stated

Approved *[Signature]*  
Director of Surveys

2004/11/29

○ Denotes Iron put unless otherwise stated  
Bearings are based on Solar Observations

PLAN of a parcel of land coloured pink in the Ward of Siparia  
Containing one hundred and twenty two point one square metres  
Surveyed by me, with due authority, on February 13th 2001

In accordance with Regulation 25 (1) of The Land Surveyors' Regulations 1998,  
I certify that this plan is correct.

Checked by *[Signature]* 18/05/04

Entered on . . . . . Trinidad & Tobago Land Surveyor. . . . .

SCALE 1/2000

Distances are in metres

