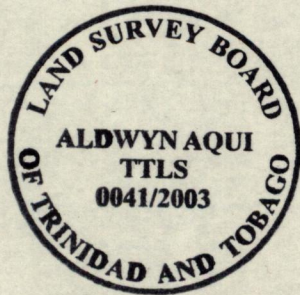
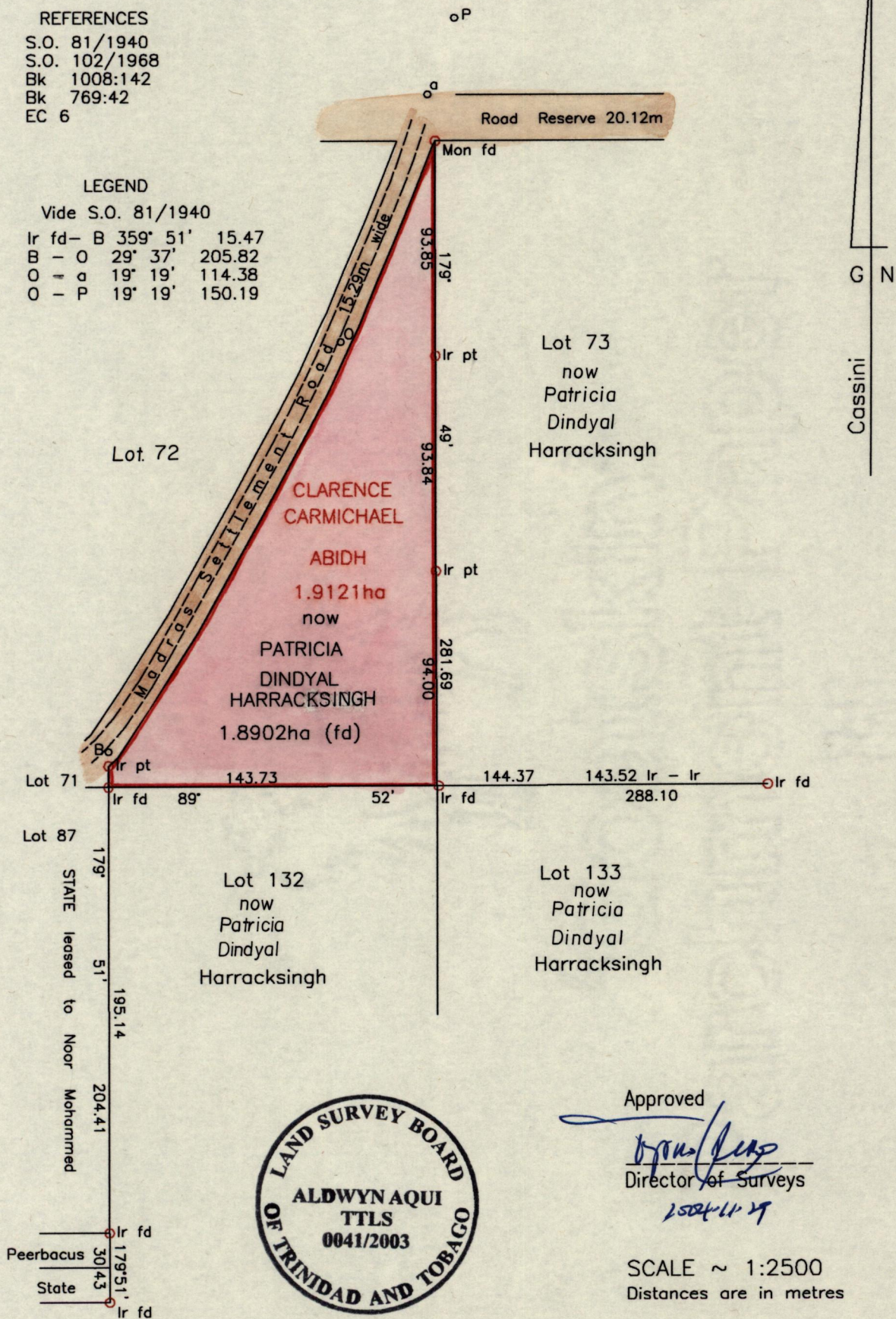


REFERENCES
 S.O. 81/1940
 S.O. 102/1968
 Bk 1008:142
 Bk 769:42
 EC 6

LEGEND
 Vide S.O. 81/1940
 lr fd- B 359° 51' 15.47
 B - O 29° 37' 205.82
 O - a 19° 19' 114.38
 O - P 19° 19' 150.19



NB. Bearings are Cassini grid, based on solar observations.

Plan of a parcel of land coloured pink in the Ward of Cunupia
 Containing one point eight nine zero two hectares
 Re-defined by me, with due authority, in July 2003
 In accordance with regulation 25(1) of the Land Surveyors' Regulations 1998,
 I certify that this plan is correct.

Checked by *Abidh*
 Entered on

AbidhT.T.L.S.
 Trinidad & Tobago Land Surveyor ...31...07...2003