

1195

1000

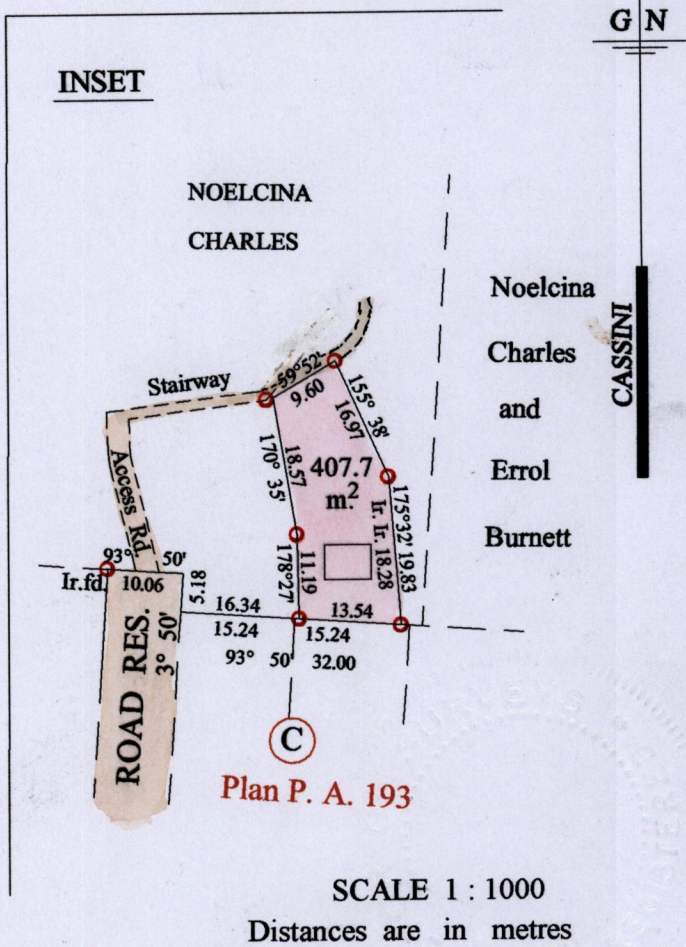
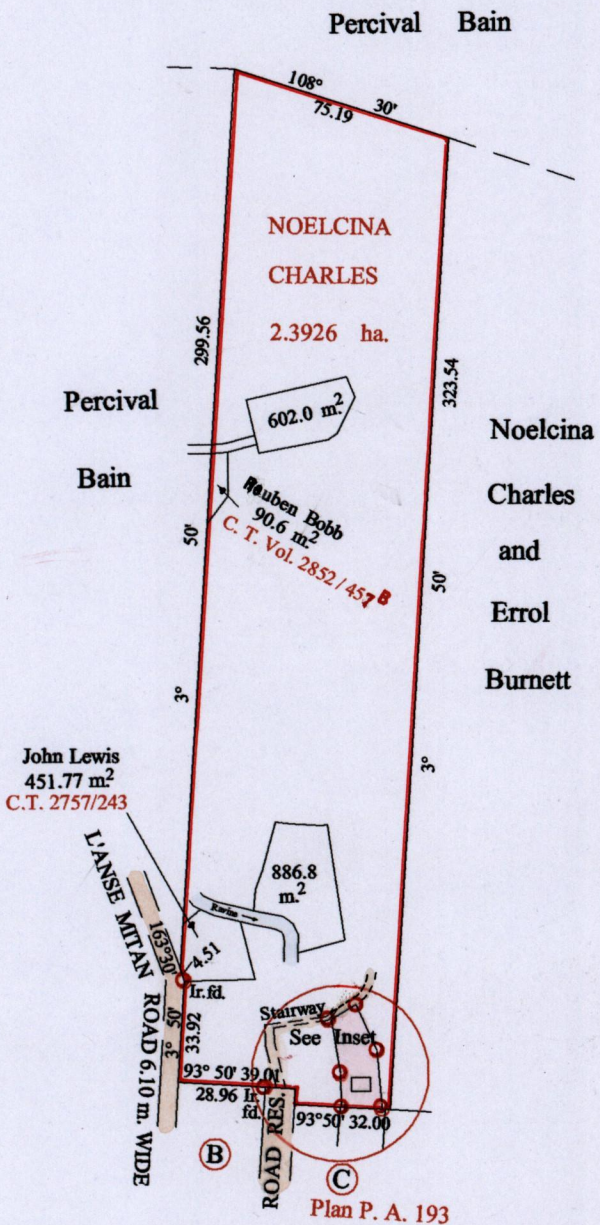
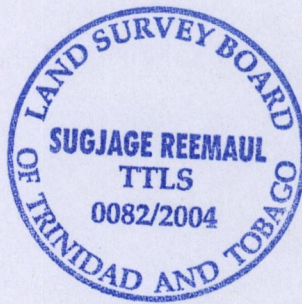
1195/1000

12F/2/c

R.P.O. Vol. fol.
C.T. Vol. 2457 fol. 17

Ward of Diego Martin
County of St. George
Cadastral Sheet (A. 19. B.) $\frac{12F}{2/c}$

Bk. 1128 fol. 138
Bk. 1273 fol. 55, 56, 57.



SCALE 1 : 1000
Distances are in metres

Approved *[Signature]*
Director of Surveys
2004/11/29

○ Denotes Iron Put Except
Otherwise Stated

SCALE : 1 : 2500

Note: Bearings are cassini grid based on solar observations Distances are in metres
PLAN of a Parcel of land coloured pink in the Ward of Diego Martin
Containing four hundred and seven point seven sq. metres
Surveyed by me, with due authority, in June 2003
In accordance with Regulation 25 (1) of the Land Surveyors' Regulations 1998,
I certify that this plan is correct.

Checked by *[Signature]* *[Signature]*

Entered on Trinidad & Tobago Land Surveyor *[Signature]* 2004