

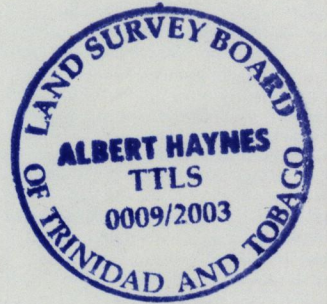
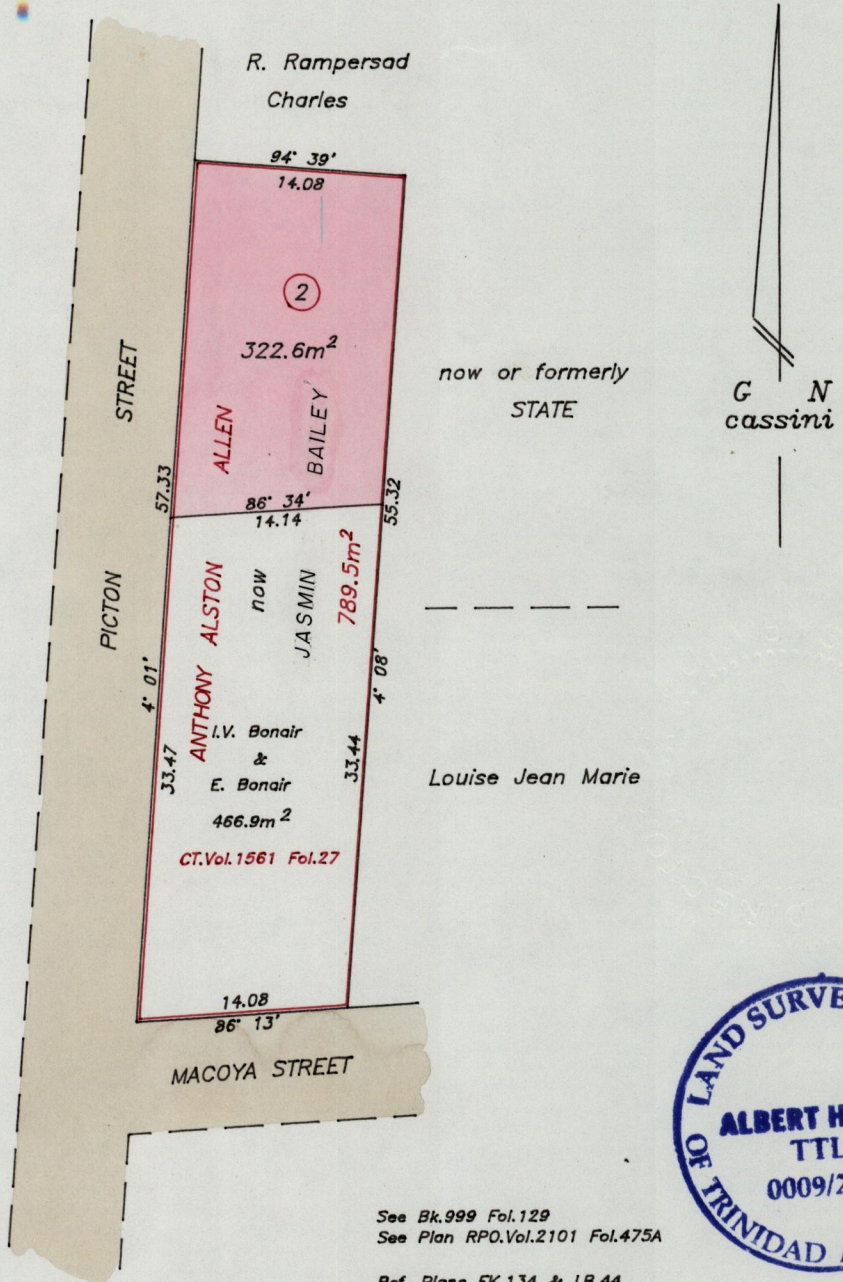
REMAINING PORTION

Ward of Tacarigua

County of St. George

C.T.Vol. 1549 Fol. 113

Cadastral Sheet B.18.N. $\frac{24A}{1/b}$



See Bk.999 Fol.129
See Plan RPO.Vol.2101 Fol.475A

Ref. Plans EK.134 & LB.44
Ref.Bks. 948:247

SCALE 1/500

Distances are in metres

Approved

 Director of Surveys
 10th. 8. 00

Co-ordinates scaled from 1/10,000 ward sheet
 Bearings are Cassini grid based on Magnetic Needle
 Note: To obtain compass bearings add 4 minutes.

This is a true copy of a diagram of seven hundred and eighty nine point five square metres originally granted to Alston Allen, shewing a portion coloured pink and containing three hundred and twenty two point six square metres being the remainder after one previous transfer of another portion of the land.

In accordance with Regulation 25 (1) of the Land Surveyors' Regulations 1998,

I certify that this plan is correct.

Checked by 11.8.03

Entered.....

Trinidad & Tobago Land Surveyor 12 July 2003