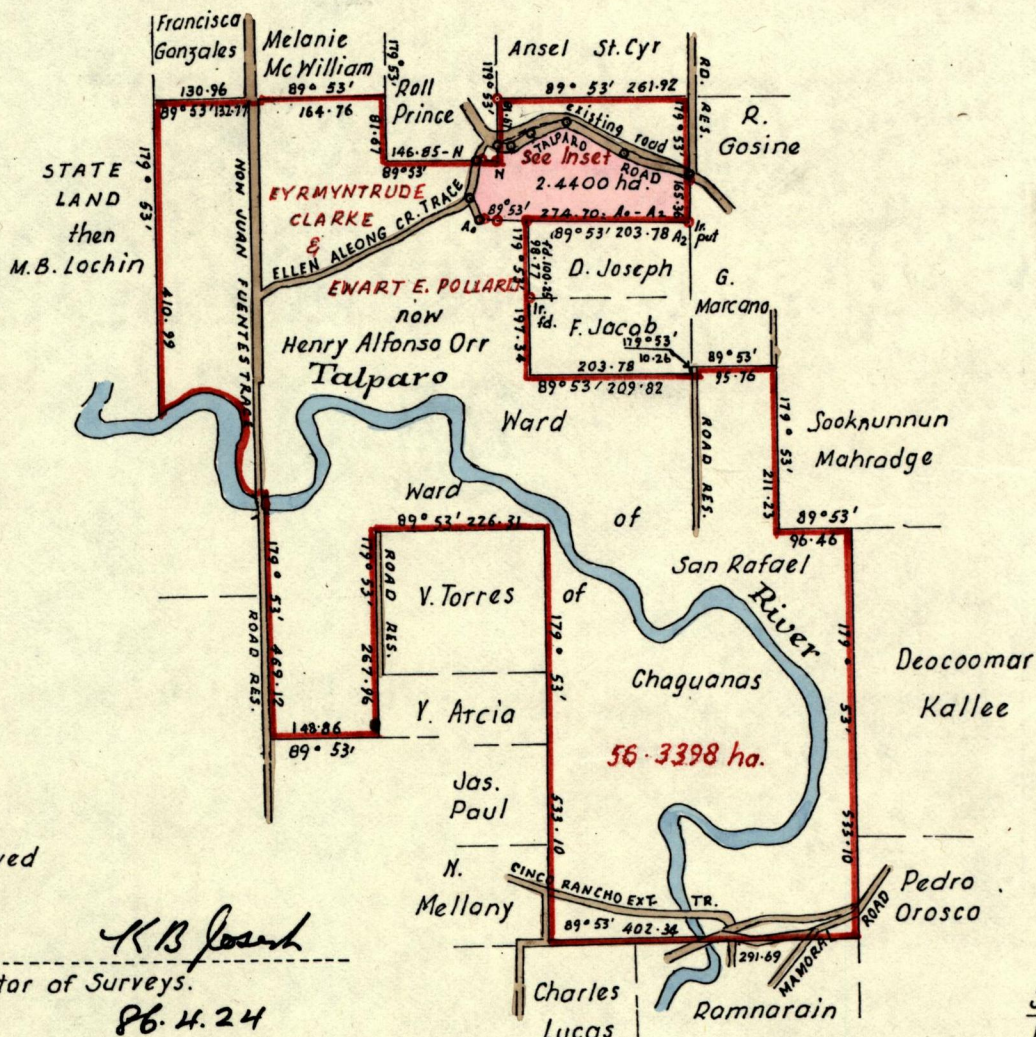
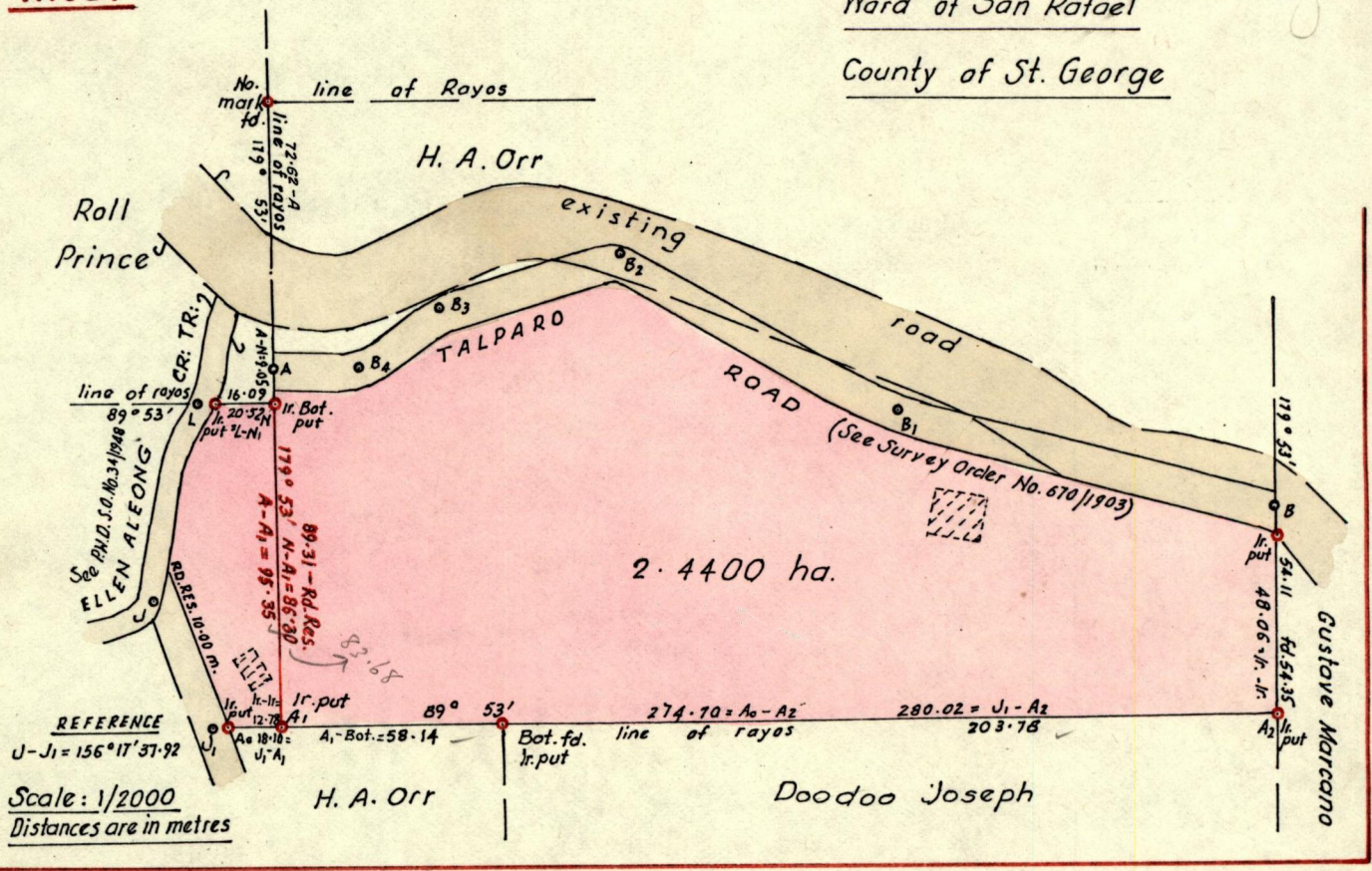


INSET

Ward of San Rafael

County of St. George



Approved

K B Joseph

Director of Surveys.

86. 4. 24

Note: To obtain Compass bearings add 7 minutes.

PLAN of a Parcel of Land coloured pink, in the Ward of San Rafael

Containing two point four four zero zero hectares

Surveyed by me, with due authority, in January 1986.

I certify that I have complied with Rule 76 under Section 14(2)(d) of the Land Surveyors' Ordinance 1952, & that this plan is correct.

Checked by *23/4/86*

Entered on

Arnold A. S. Ranson ARICS.
Land Surveyor, Trinidad. 19/2 February 1986.

For notes please see overleaf.

Original Survey Plan E.I. 67

