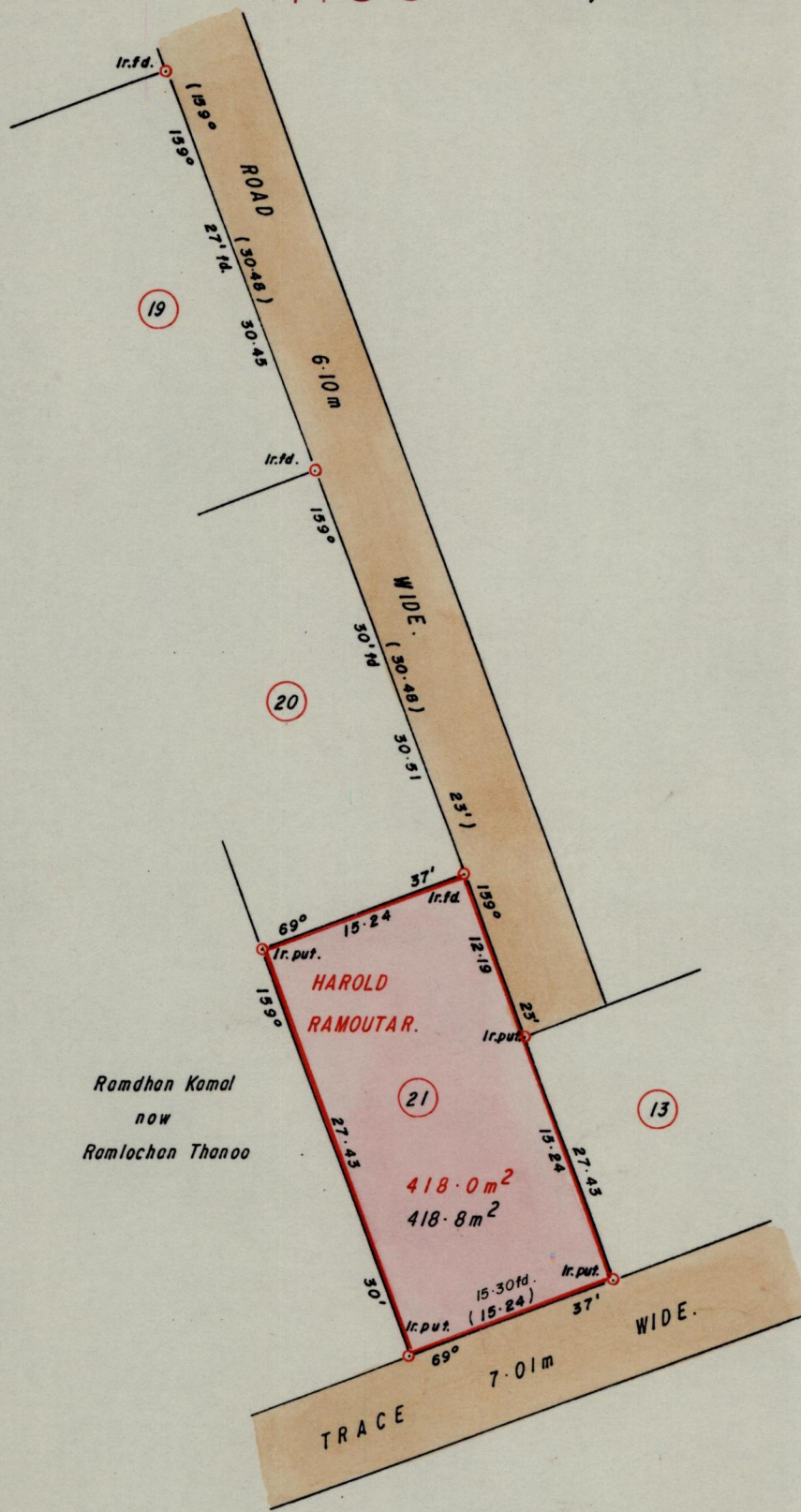


1155

718



Ramdhan Kamal
 now
 Ramlochan Thanoo

Approved Lau Chole
 Director of Surveys
 94.06.28

Bearings are based on Solar Obs. (Cassini Grid.) SCALE 1 / 500.
 Note: To obtain compass bearings add/subtract minutes Distances are in metres.

PLAN of a Parcel of land coloured pink in the Ward of Pointe - a - Pierre.
 Containing four hundred and eighteen point eight square metres.
 Surveyed by me, with due authority, in September, 1993.
 I certify that I have complied with rule 76 under section 14(2)(d) of the
 Land Surveyors' Ordinance 1952, and that this plan is correct.

Checked by Mel 22 Jan 94 A. Leonoram
 Entered Land Surveyor, Trinidad 16th February 1994