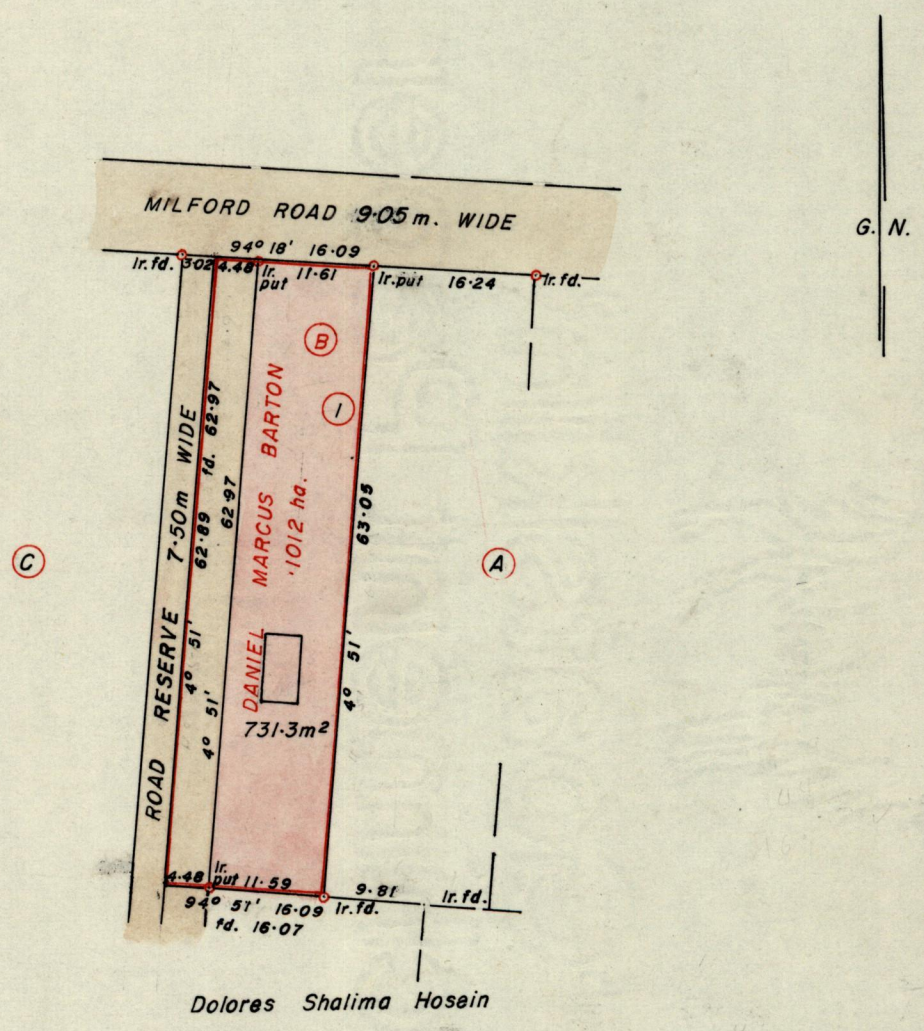


No 13159

R.P.O. Vol. 520  
C.T. Vol. 1800

Fol. 469  
Fol. 319

Ward of Tobago  
Parish of St. Patrick  
Cadastral Sheet 121 <sup>1E</sup>/<sub>5/b/4</sub>



Approved *[Signature]*  
Director of Surveys  
86.4.23

Note. Bearings based on line A-B 184° 51'

SCALE 1 750

Note: To obtain compass bearings add/subtract

minutes

Distances are in Metres

PLAN of a Parcel of land coloured pink in the Ward of Tobago  
Containing Seven hundred and thirty one point three square metres  
Surveyed by me, with due authority, in March 1983

I certify that I have complied with rule 76 under section 14(2)(d) of the  
Land Surveyors' Ordinance 1952, and that this plan is correct.

Checked by *[Signature]* 22/4/83

*[Signature]*  
Land Surveyor, Trinidad 22<sup>nd</sup> April 1983