

1155

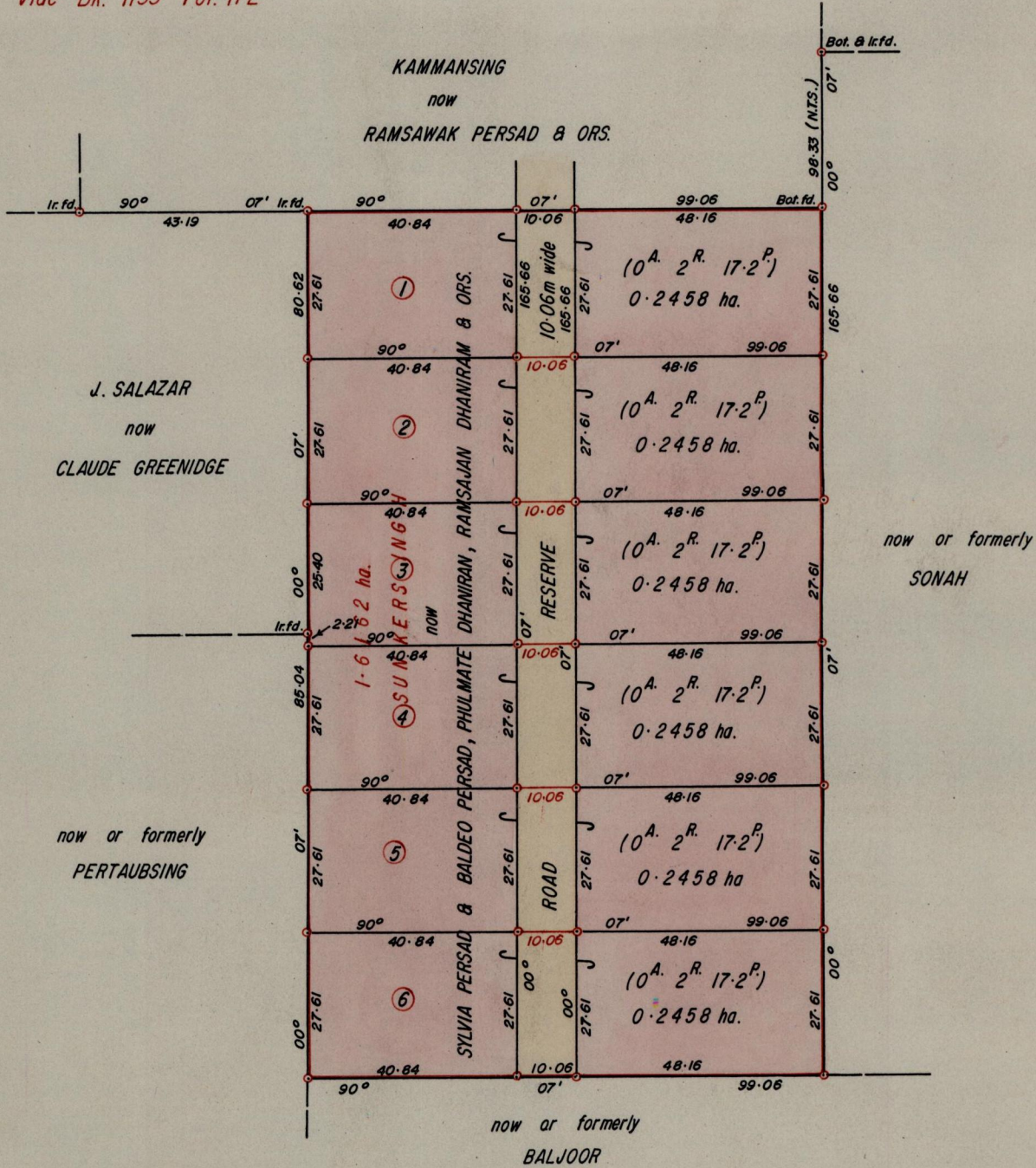
697

R.P.O. Vol. 10
C.T. Vol.

Fol. 515
Fol.

Ward of Siparia
County of St. Patrick
Cadastral Sheet G.12.A. $\frac{63 D}{1/b,2/a}$

Vide Bk. 1155 Fol. 172



Approved

Francis Charles

Director of Surveys
94.05.06

o Denotes Iron put except otherwise stated.

SCALE 1:1250

Bearings are Cassini Grid, based on Solar Observations

Note: To obtain compass bearings add/subtract 7 minutes

Distances are in metres

PLAN of 6 Parcels of land coloured pink in the Ward of Siparia

Containing together one point four seven four eight hectares

Prepared by me, from a Survey done by C.L. Stoute in January & August 1977

I certify that I have complied with rule 76 under section 14(2)(d) of the Land Surveyors' Ordinance 1952, and that this plan is correct.

Checked by *MZ* 11/03/94

Ganeshdath Ramcharitar
24/1/94
Land Surveyor, Trinidad and Tobago