

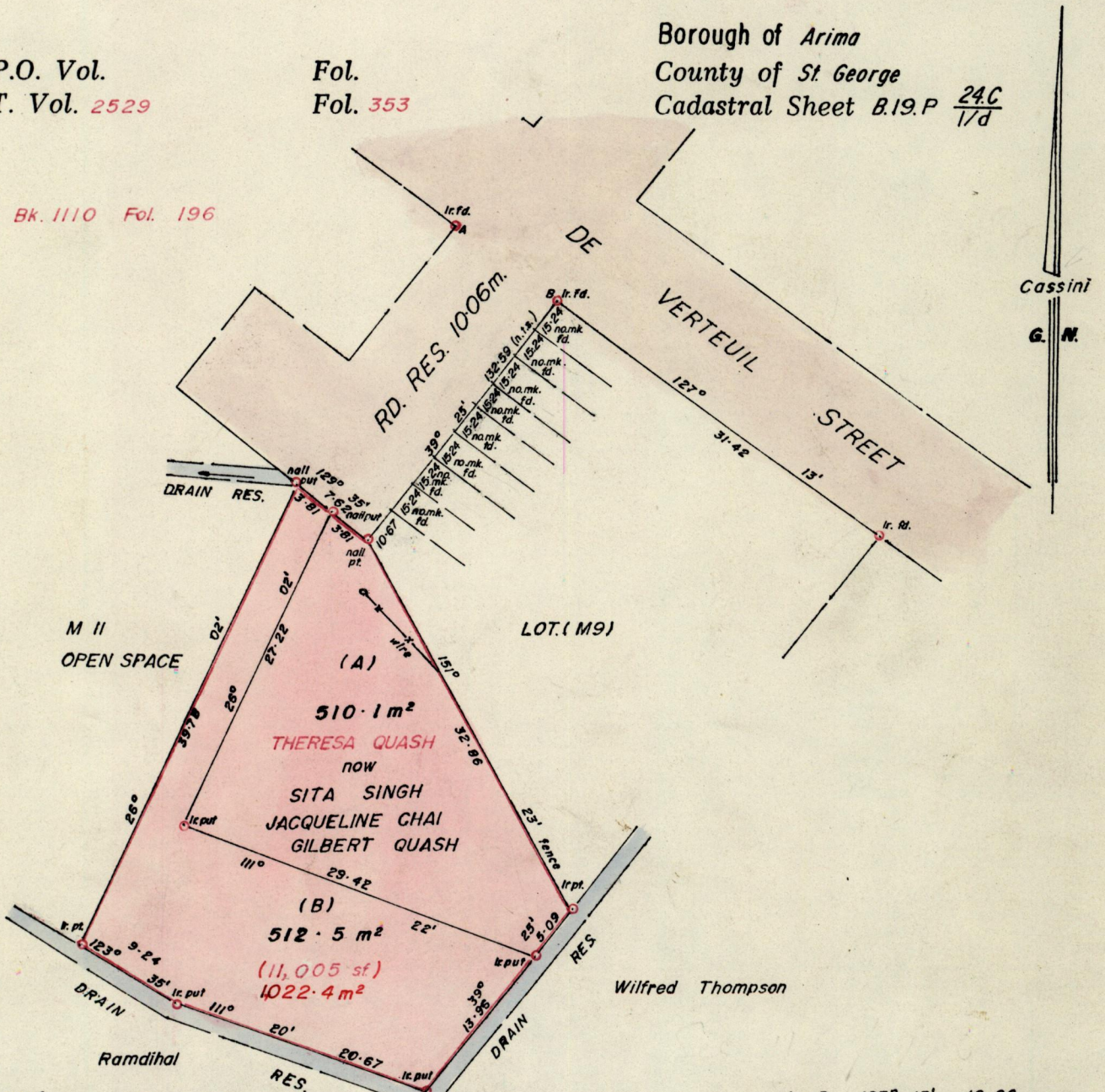
No 18413

R.P.O. Vol.
C.T. Vol. 2529

Fol.
Fol. 353

Borough of Arima
County of St George
Cadastral Sheet B.19.P ^{24C}/_{17D}

See Bk. 1110 Fol. 196



Approved *[Signature]*
 Director of Surveys
 940316

A - B 127° 13' 10.06

SCALE 1:500

Note: To obtain compass bearings add/subtract

minutes

Distances are in Metres

PLAN of a Parcel of land coloured pink in the Borough of Arima
 Containing together one thousand and twenty one point six square metres
 Surveyed by me, with due authority, in June 1992

I certify that I have complied with rule 76 under section 14(2)(d) of the
 Land Surveyors' Ordinance 1952, and that this plan is correct.

Checked by *[Signature]* *[Signature]*

Entered Land Surveyor, Trinidad *[Signature]* 19.92