

No

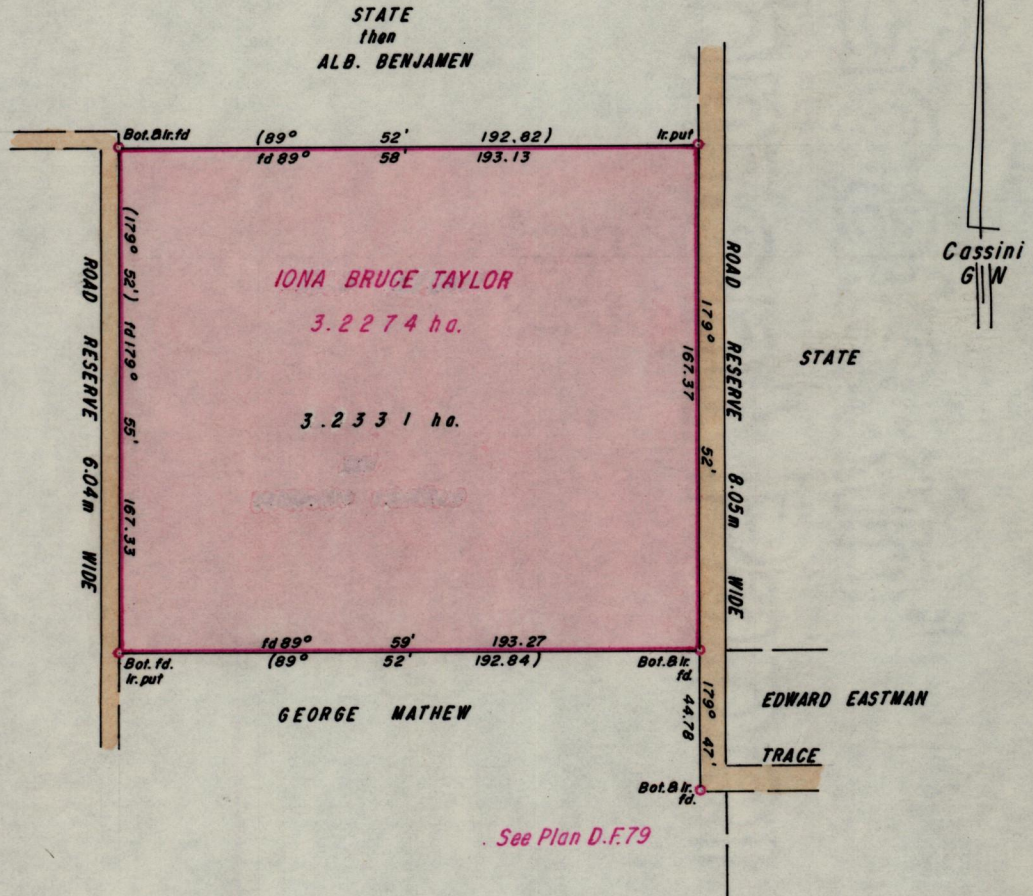
22336

R.P.O. Vol. 543
C.T. Vol. 3080

Fol. 265
Fol. 431

Ward of San Rafael
County of Victoria
Cadastral Sheet D.5.N. 34C
2/b82/d

S.O. 26/23
Bk. 295 Fol. 173



Approved

Alwyn ...
 Director of Surveys
 89.05.09

Bearings are based on solar observations
Note: To obtain compass bearings add/subtract

SCALE 1:2500
minutes

Distances are in Metres

PLAN of a Parcel of land coloured pink in the Ward of San Rafael
Containing three point two three three one hectares

Surveyed by me, with due authority, in March 1989

I certify that I have complied with rule 76 under section 14(2)(d) of the
Land Surveyors' Ordinance 1952, and that this plan is correct.

Checked by *GR 4/5/89*

Juan ...

Entered

Land Surveyor, Trinidad 17th APRIL 1989