

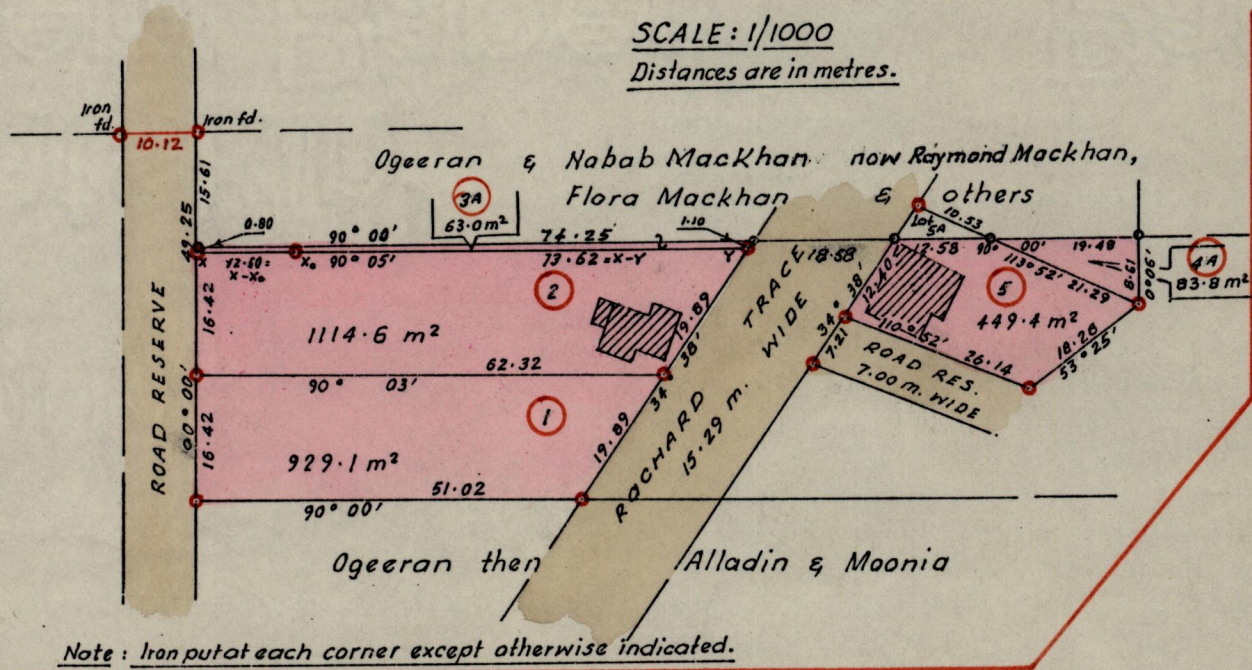
R.P.O. Vol.  
C.T. Vol. 1017

Fol.  
Fol. 115

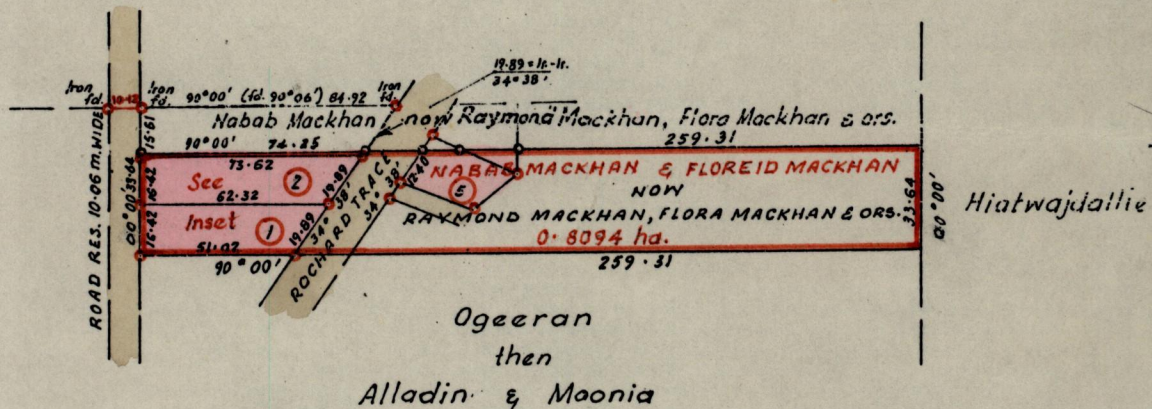
Ward of Siparia  
County of St. Patrick  
Cadastral Sheet G. 18. D. (13C / 2/a, 2/b)

INSET

SCALE: 1/1000  
Distances are in metres.



Note: Iron putat each corner except otherwise indicated.



Approved

*Alvinza Thiel*  
Director of Surveys  
4 89.05.10

SCALE: 1/2500

Note: To obtain compass bearings add/subtract — minutes Distances are in metres  
PLAN of 5 Parcels of land coloured pink, in the Ward of Siparia  
~~containing~~

Surveyed by me, with due authority, in May 1988

I certify that I have complied with rule 76 under Section 14 (2) (d) of the Land Surveyors' Ordinance 1952, and that this plan is correct.

Checked by *10/5/89*

Entered.....

*J.R. Jardine*  
Land Surveyor, Trinidad 12/7/1988