

1155

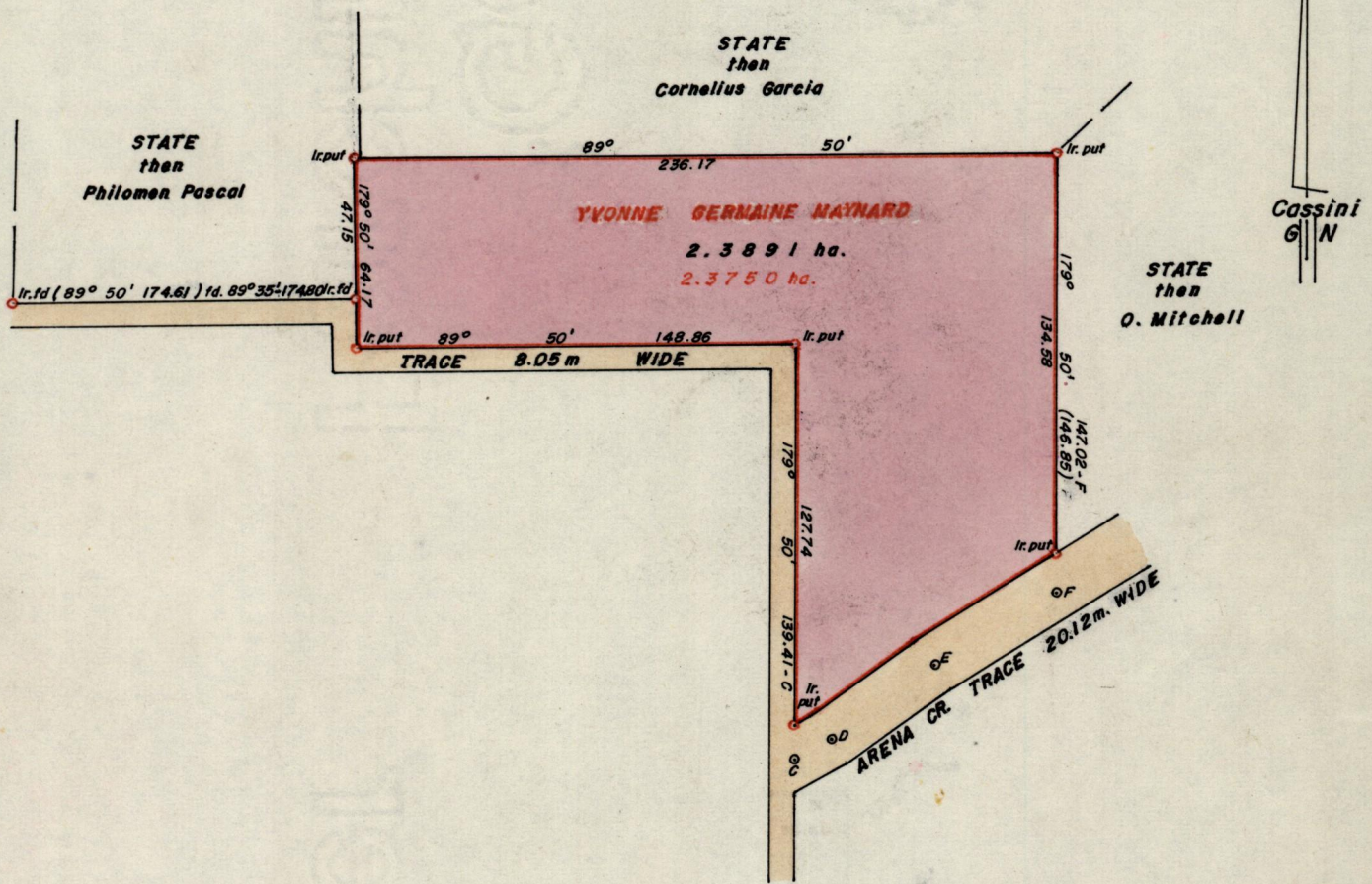
L. & S.—54 552  
552

No 22012

R.P.O. Vol. 311  
C.T. Vol. 3243  
See Bk.33 Fol.232  
& S.O.180/12

Fol. 107  
Fol. 453

Ward of San Rafael  
County of St. George  
Cadastral Sheet D.S.N. 34C  
2/d



Approved *Alonso Thibaut*  
Director of Surveys  
89-04-28

See Bk 287 Fol.68  
Plan E.B.8

Bearings are based on solar observations

SCALE 1:2500

Note: To obtain compass bearings add/subtract 10 minutes Distances are in Metres

PLAN of a Parcel of land coloured pink in the Ward of San Rafael  
Containing two point three eight nine one hectares

Surveyed by me, with due authority, in October 1988

I certify that I have complied with rule 76 under section 14(2)(d) of the  
Land Surveyors' Ordinance 1952, and that this plan is correct

Checked by *GR 27/4/89* *Hug Somard*

Entered Land Surveyor, Trinidad *20th December 1988*

Original Bk 33 :232

