

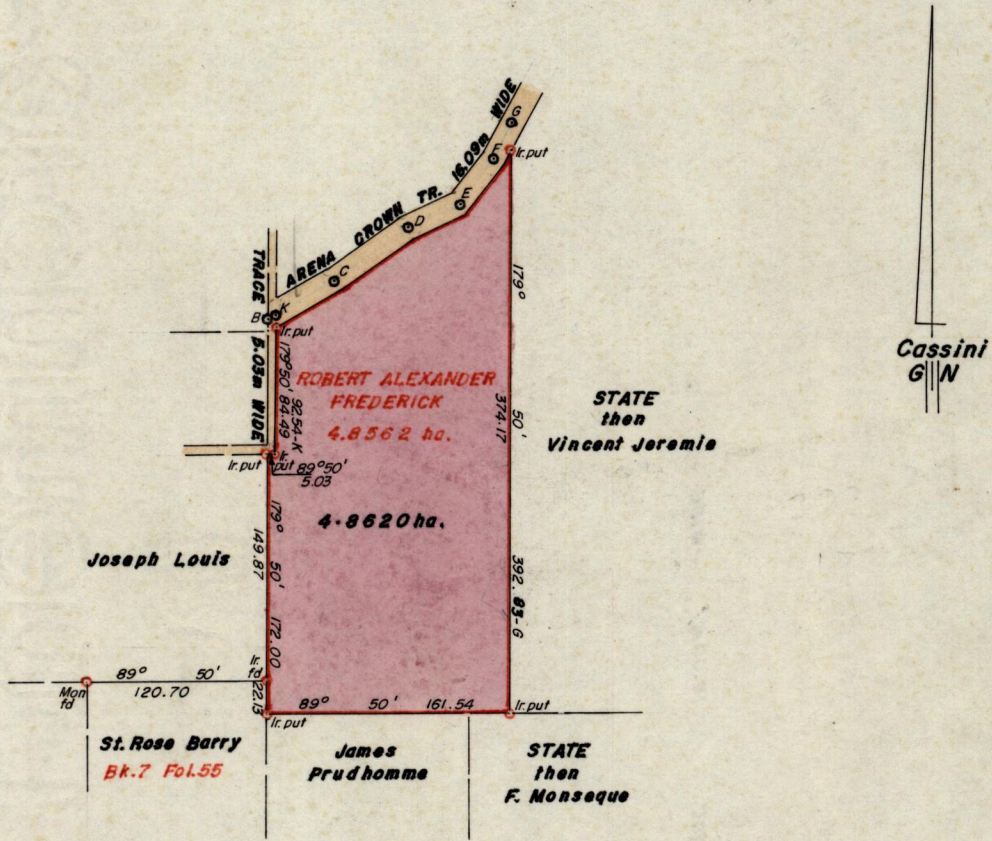
No 15768

R.P.O. Vol. 304
C.T. Vol.

Fol. 139
Fol.

Ward of San Rafael
County of St. George
Cadastral Sheet D.S.N. $\frac{34C}{2/d}$

See Bk. 33 Fol. 106
& S.O. 15/12



Approved

Alwyn Thind
Director of Surveys
89.04.28

Bearings are based on solar observations

SCALE 1:5000

Note: To obtain compass bearings add/subtract 10 minutes

Distances are in Metres

PLAN of a Parcel of land coloured pink in the Ward of San Rafael
Containing four point eight six two zero hectares

Surveyed by me, with due authority, in October 1988

I certify that I have complied with rule 76 under section 14(2)(d) of the
Land Surveyors' Ordinance 1952, and that this plan is correct.

Checked by *GR 27/4/89*

Alwyn Thind

Entered

Land Surveyor, Trinidad 20th December 1988

Original Bk 33 : 106

