

No

24296

1155

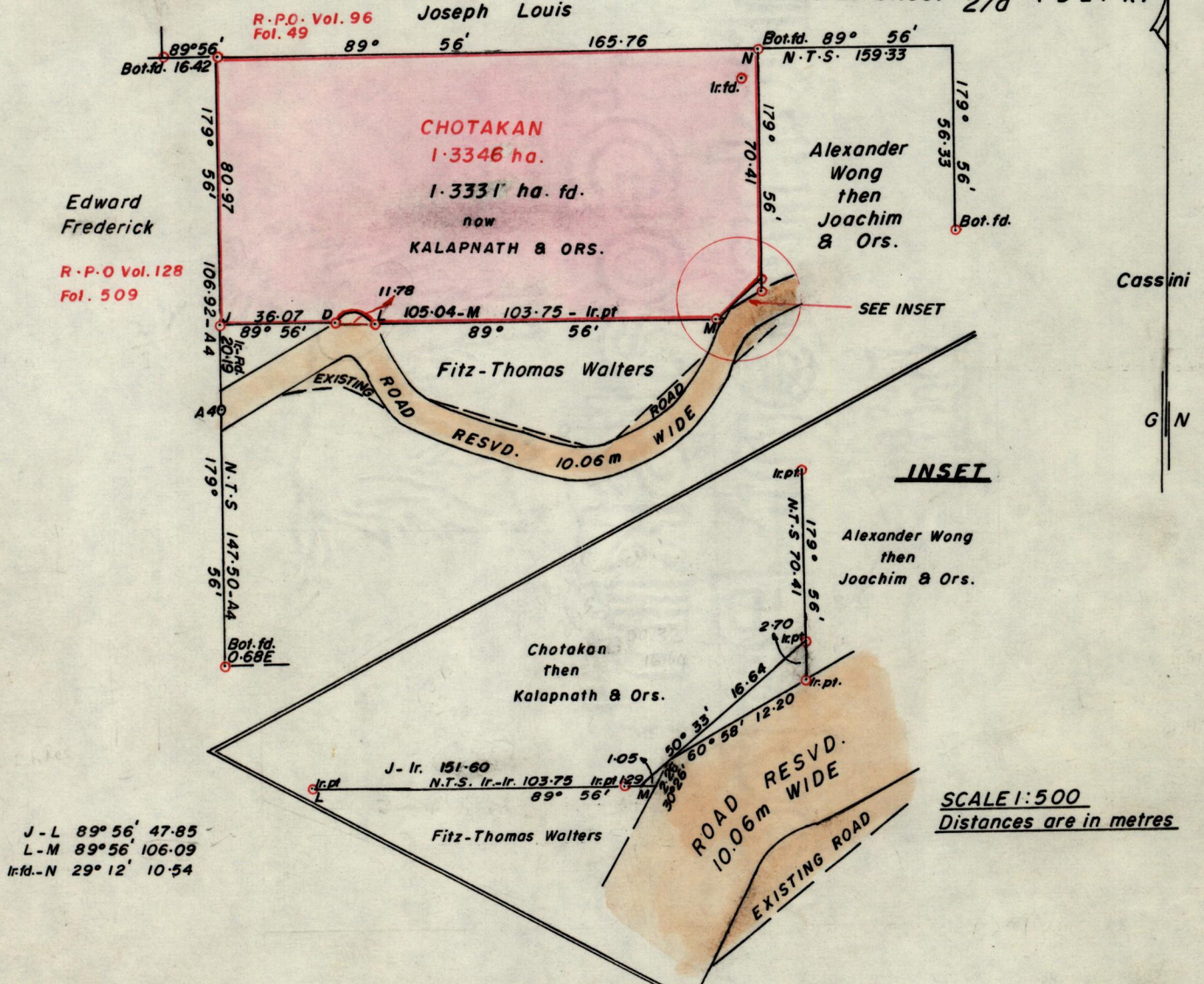
L. & S.-54

546

R.P.O. Vol. 119  
C.T. Vol. 550

Fol. 625  
Fol. 533

Ward of Savana Grande  
County of Victoria  
Cadastral Sheet  $\frac{54B}{2/D}$  (D.24.K)



Approved

*Alwyn Thomas*  
Director of Surveys  
89.04.19

SCALE 1:2000

○ Denotes Iron put except stated otherwise

Note: To obtain compass bearings add/subtract 4 minutes

Distances are in metres

PLAN of a Parcel of land coloured pink in the Ward of Savana Grande  
Containing one point three three three one hectares  
Surveyed by me, with due authority, in September 1988

I certify that I have complied with rule 76 under section 14(2)(d) of the  
Land Surveyors' Ordinance 1952, and that this plan is correct.

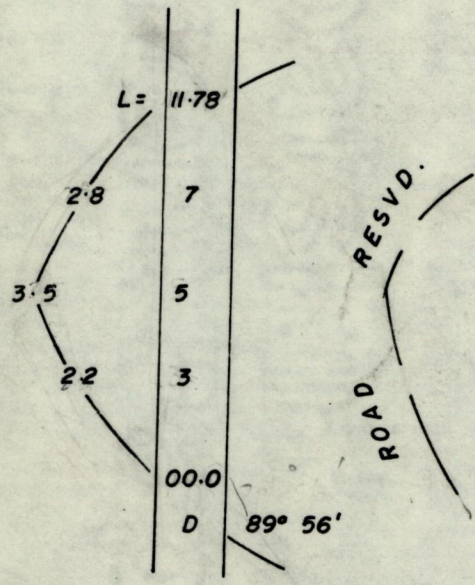
Checked by *GR 19/4/89*

*Alwyn Thomas*  
Land Surveyor, Trinidad

Entered

4<sup>th</sup> October 1988

Original survey Blk 721 :165.



2199

13330.7

13331.1