

1155

L. & S.—54

537

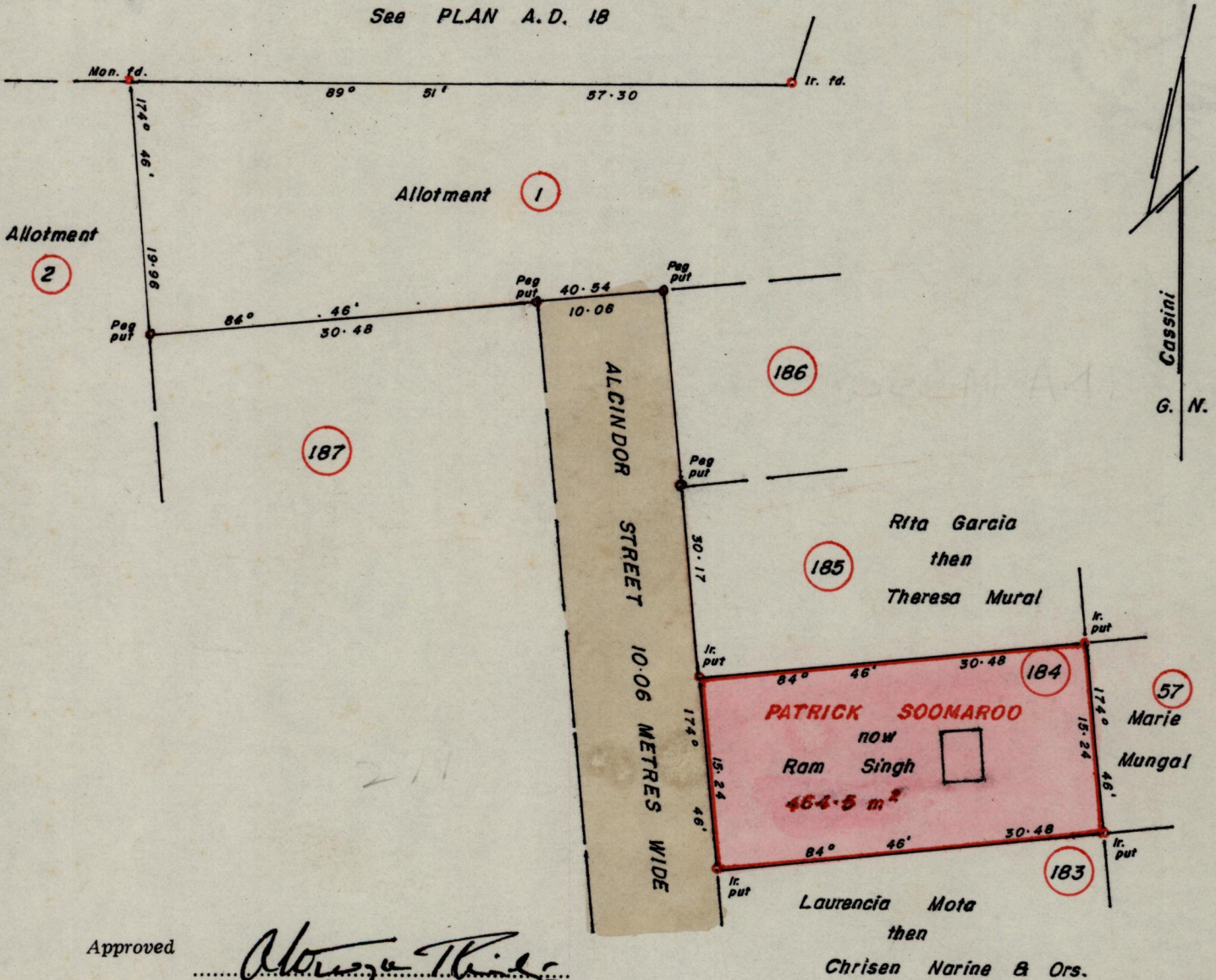
No 15957

R.P.O. Vol. 279
C.T. Vol. 3099

Fol. 109
Fol. 119

Ward of *Montserrat*
County of *Caroni* 44B
Cadastral Sheet 2/c D. 14. N.

See PLAN A. D. 18



Approved *Alonso Thiel*
 Director of Surveys
 89.04.07

SCALE 1/1000
 minutes Distances are in metres

Note: To obtain compass bearings add/subtract
 PLAN of a Parcel of land coloured pink in the Ward of *Montserrat*
 Containing four hundred and sixty four point five square metres
 Redefined Surveyed by me, with due authority, in *March, 1989*

I certify that I have complied with rule 76 under section 14(2)(d) of the
 Land Surveyors' Ordinance 1952, and that this plan is correct.

Checked by *SR 4/4/89* *Andrew Bowden*
 Entered Land Surveyor, Trinidad *3rd April 1989*