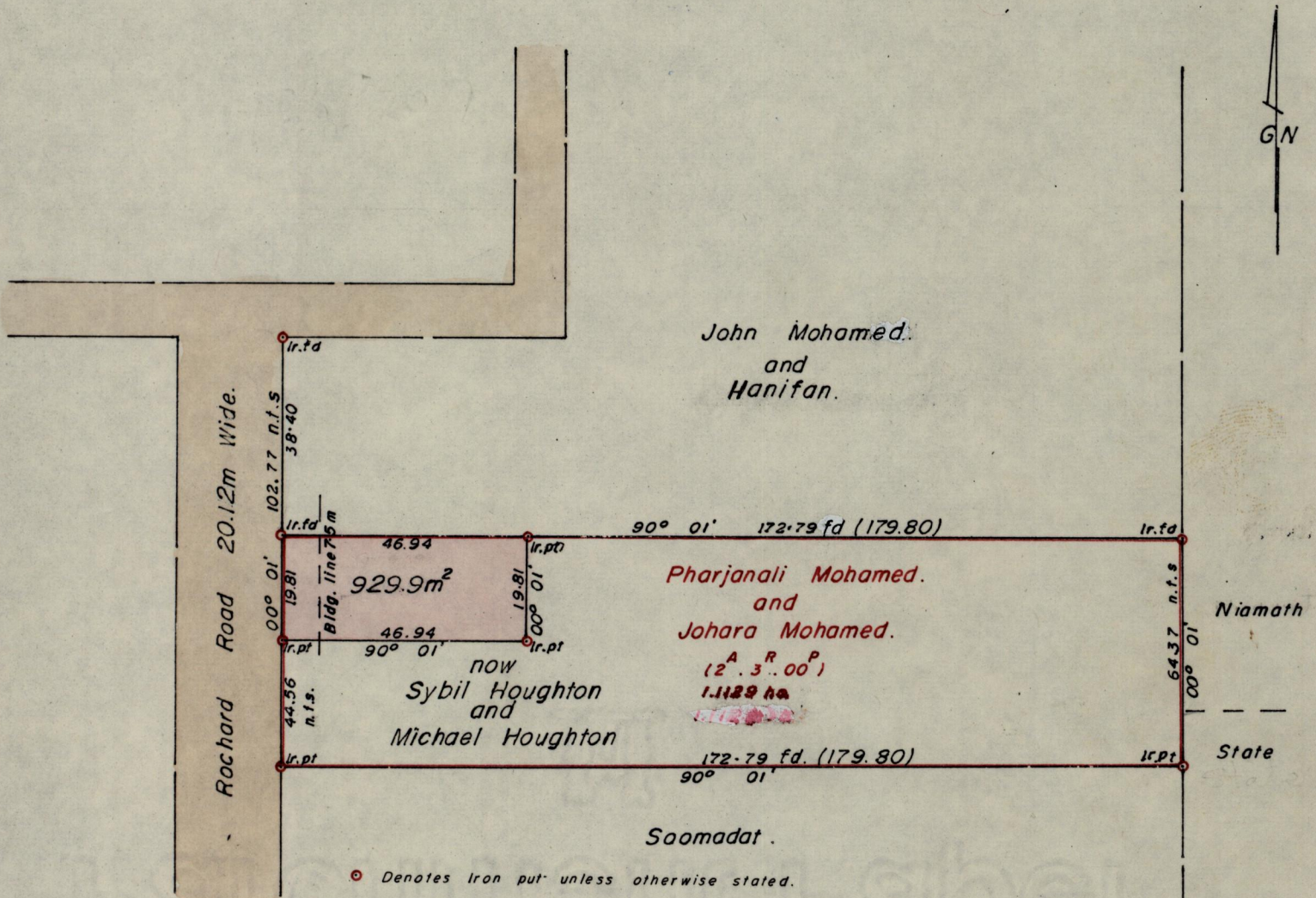


No 22451

R.P.O. Vol. 145.
C.T. Vol. 1400.

Fol. 343.
Fol. 339.

Ward of Siparia.
County of St Patrick.
Cadastral Sheet G. 18. D. $\frac{73C}{21E}$



Approved *Alwyn R. Kelly*
Director of Surveys
89.04.05

SCALE 1:1250.

Note: To obtain compass bearings add/subtract minutes Distances are in Metres.

PLAN of a Parcel of land coloured pink in the Ward of Siparia.
Containing nine hundred and twenty nine point nine square metres.
Surveyed by me, with due authority, in December, 1987

I certify that I have complied with rule 76 under section 14(2)(d) of the
Land Surveyors' Ordinance 1952, and that this plan is correct.

Checked by *GR 4/4/89* *Lawrence Blake*
Entered Land Surveyor, Trinidad *9th February* 1988.